

Kim, Yunhee; Lee, Jeong-dong; Heshmati, Almas

**Working Paper**

## Analysis of pay inequality and its impacts on growth and performance in the Korean manufacturing industry

IZA Discussion Papers, No. 3774

**Provided in Cooperation with:**

IZA – Institute of Labor Economics

*Suggested Citation:* Kim, Yunhee; Lee, Jeong-dong; Heshmati, Almas (2008) : Analysis of pay inequality and its impacts on growth and performance in the Korean manufacturing industry, IZA Discussion Papers, No. 3774, Institute for the Study of Labor (IZA), Bonn, <https://nbn-resolving.de/urn:nbn:de:101:1-20081126308>

This Version is available at:

<https://hdl.handle.net/10419/35332>

**Standard-Nutzungsbedingungen:**

Die Dokumente auf EconStor dürfen zu eigenen wissenschaftlichen Zwecken und zum Privatgebrauch gespeichert und kopiert werden.

Sie dürfen die Dokumente nicht für öffentliche oder kommerzielle Zwecke vervielfältigen, öffentlich ausstellen, öffentlich zugänglich machen, vertreiben oder anderweitig nutzen.

Sofern die Verfasser die Dokumente unter Open-Content-Lizenzen (insbesondere CC-Lizenzen) zur Verfügung gestellt haben sollten, gelten abweichend von diesen Nutzungsbedingungen die in der dort genannten Lizenz gewährten Nutzungsrechte.

**Terms of use:**

*Documents in EconStor may be saved and copied for your personal and scholarly purposes.*

*You are not to copy documents for public or commercial purposes, to exhibit the documents publicly, to make them publicly available on the internet, or to distribute or otherwise use the documents in public.*

*If the documents have been made available under an Open Content Licence (especially Creative Commons Licences), you may exercise further usage rights as specified in the indicated licence.*

IZA DP No. 3774

## Analysis of Pay Inequality and its Impacts on Growth and Performance in the Korean Manufacturing Industry

Yunhee Kim  
Jeong-Dong Lee  
Almas Heshmati

October 2008

# **Analysis of Pay Inequality and its Impacts on Growth and Performance in the Korean Manufacturing Industry**

**Yunhee Kim**

*Seoul National University*

**Jeong-Dong Lee**

*Seoul National University*

**Almas Heshmati**

*Seoul National University  
and IZA*

Discussion Paper No. 3774

October 2008

IZA

P.O. Box 7240  
53072 Bonn  
Germany

Phone: +49-228-3894-0  
Fax: +49-228-3894-180  
E-mail: [iza@iza.org](mailto:iza@iza.org)

Any opinions expressed here are those of the author(s) and not those of IZA. Research published in this series may include views on policy, but the institute itself takes no institutional policy positions.

The Institute for the Study of Labor (IZA) in Bonn is a local and virtual international research center and a place of communication between science, politics and business. IZA is an independent nonprofit organization supported by Deutsche Post World Net. The center is associated with the University of Bonn and offers a stimulating research environment through its international network, workshops and conferences, data service, project support, research visits and doctoral program. IZA engages in (i) original and internationally competitive research in all fields of labor economics, (ii) development of policy concepts, and (iii) dissemination of research results and concepts to the interested public.

IZA Discussion Papers often represent preliminary work and are circulated to encourage discussion. Citation of such a paper should account for its provisional character. A revised version may be available directly from the author.

## **ABSTRACT**

### **Analysis of Pay Inequality and its Impacts on Growth and Performance in the Korean Manufacturing Industry**

This paper examines the relationship between pay inequality, economic growth, and performance in Korea. Pay inequality is estimated by using Theil's index to identify the factors determining the level of pay inequality, and establish its relationship with economic growth and performance. For the empirical results we use panel data on the Korean manufacturing sector for the period 1993 to 2003. It appears that a large portion of rising pay inequality can be attributed to rising relative pay among the small-sized firms, outside the capital city area and in the ICT sectors which were affected by the economic structural reform since 1997. The findings support the hypothesis of an "augmented" Kuznets Curve, according to which certain developed countries are found on an upward-sloping addendum to the original formulation of Kuznets.

JEL Classification: C43, J31, J38, O4

Keywords: pay inequality, financial crisis, Kuznets Curve, economic growth, performance

Corresponding author:

Almas Heshmati  
Technology, Management, Economics and Policy Program (TEMEP)  
College of Engineering  
Seoul National University  
San 56-1, Shilim-dong, Kwanak-go  
Seoul 151-742  
Korea  
E-mail: [heshmati@snu.ac.kr](mailto:heshmati@snu.ac.kr)

## I. Introduction

Since Kuznets posited his now famous inequality curve in 1955, the issue of the relationship between inequality and economic growth has troubled economists and social scientists. Normative questions regarding social equity aside, whether or not inequality and growth are correlated and in which direction, if any, causation flows have far-reaching implications for economic and social policy that cannot be ignored. Especially Kuznets hypothesis is about inverted u-relationship between two variables, meaning using square of the explanatory variable and checking the sign and significance of it. So in this study we look at relationship between economic growth and inequality to find answers to these questions. Is inequality an unfortunate but necessary ingredient for growth, or is it possible that equality and growth be compatible or, perhaps, even complementary? Such questions are symptomatic of a broader debate regarding the existence of a trade-off between innovation and equality in general (Okun, 1975).

Simon Kuznets hypothesized that the relationship between growth and pay inequality changes on the basis of the level of development of a country or the degree of industrialization. In the initial phase of development, income diverges as the rural population migrates to the more unequal, higher-wage urban industrial centers. However, as the urban proletariat matures, political institutions that increase the income shares of lower-wage workers are created and inequality decreases as industrialization deepens (Kuznets, 1955).<sup>1</sup> Therefore, for a given level of income (or industrialization), the relationship between growth and pay inequality is assumed to be stable—negative for most countries currently on the downward-sloping portion of the curve.

Although Kuznets hypothesized the effect of growth (or development) on inequality, subsequent literature reversed this causal relationship. Empirical work seeking to confirm or reject the hypothesis put forward by Kuznets has proliferated in recent years, using both pooled and panel data in an attempt to shed light on the relationship across countries and time. Surveying twenty-three different studies, Benabou (1996) concluded that initial inequality is detrimental to long-run growth.

Recent work has found that a few rich countries specializing in high-wage, advanced capital goods have experienced a post-Kuznets rise in inequality. While most developing and industrialized countries are found on the downward portion of Kuznets' inverted U-shaped curve inequality has been raising with increased income levels in high-income countries such as Japan, United States and United Kingdom. Conceição and Galbraith (2001) postulate that the original formulation of Kuznets may apply only as long as countries principally produce consumer goods, and may break down as industrial activity shifts to monopolistic, advanced technology goods for the world market. In that case, the richest and most advanced industrial economies producing capital goods for export would be found on an "augmented" Kuznets Curve with an upward-sloping tail for such countries, as shown in Figure 1. However, away from the peak and trough of the augmented curve, the relationship between growth and inequality is presumed to be a more or less a stable function of income level.

[Insert Figure 1 here]

---

<sup>1</sup> Among other factors causing decreased inequality, continuous urbanization and increased coverage of equality-enhancing social welfare programs may also be responsible.

This study examines the relationship between pay inequality, economic growth, and performance in Korea. Pay inequality is estimated by using Theil's index to identify the factors determining the level of pay inequality, and establish its relationship with economic growth and performance. The empirical results are based on panel data of Korean manufacturing sector for the period 1993 to 2003. First, we review changes in industrial trend, production, and investment patterns over the period and the manner in which these changes led to the creation of a relative pay inequality among and within regions and sectors. Thereafter, we compare the annual changes in pay inequality in different sectors and annual GDP growth, finding that the previously stable and negative relationship predicted by Kuznets broke down at the height of the period of structural reform in Korea, giving way to a positive relationship after 1998. After a brief review of the reforms undertaken during the financial crisis, we will examine the evidence for this change and mechanisms by which it may have taken place. Finally, we conclude with implications and avenues for further research on the topic.

On the basis of Theil's T-statistics, results indicate a positive relationship between pay inequality and size of a firm, location, R&D, export and industry sectors. The relation holds even when we control for individual firm, time period, and firm characteristics. The decomposability property of Theil's index enables us to show that pay inequality in the Korean manufacturing industry has increased both across sectors and regions, although more strongly across industrial sectors. Despite controlling for changes in the level of real per capita income, the rise in inequality accelerates in the period following the introduction of reforms.

The questions raised above are also addressed by examining the relationship between inequality and growth in Korea, and the manner in which this relationship has possibly been affected by the Asian financial crisis. However, space and data limitations does allow only for partial inference on to what extent and how it affected pay inequality. It appears that a large portion of rising pay inequality can be attributed to rising relative pay among the small-sized firms, outside the capital city area and in the ICT sectors which were affected by the economic structural reform since 1997. The findings support the hypothesis of an "augmented" Kuznets Curve, according to which certain developed countries are found on an upward-sloping addendum to the original formulation of Kuznets.

This study adds a new dimension to research in this field by showing that the relationship between growth and inequality may change, as it does in the case of Korea for example, as a result of structural reform. Although the income level in Korea does not change appreciably during the final decades of the 20th century, data on pay inequality in the manufacturing industry indicate that the stable, negative relationship between growth and inequality predicted by Kuznets reverses at the peak of the reform period. The reversed effect implies thrusting Korea into a small group of otherwise wealthy and highly industrialized countries for whom inequality increases with economic growth.

This paper is organized in the following manner. Section II provides a brief introduction on the background of pay inequality and the Korean economy. Section III presents a review of previous studies in order to understand pay inequality and the Korean industry. Section IV explains and critiques the methodology of Theil's T-statistic. Section V presents a description of the data pertaining to the Korean

manufacturing industry and variable definition. Section VI presents the results and Section VII presents conclusions with suggestions for policy implications.

## II. Overview of the Korean Economy

As is well-known, in recent decades Korea has experienced dramatic economic development. From being one of the poorest countries of the world in the 1960s, it became a member of the Organization for Economic Cooperation and Development (OECD) in 1996. The economy has made remarkable progress since the early 1960s, with GNP growth averaging 7.8% per annum between 1961 and 2000. In a relatively short time period, the country was transformed swiftly from a poor traditional agricultural society to a modern industrial country. Comprehensive investment programs in technology and human capital made the manufacturing industry the engine of its economic growth driven by an outward-looking, government-led development strategy pursued from the early 1960s onward. During this process of growth and development, the national government intervened extensively in resource allocation, targeting industries that were to be promoted and provided necessary incentives at different levels for development and progress.

Numerous researches, including Amsden (1989) and World Bank (1993), chose to study the Korean case as one that could serve as a model for development of other developing countries; moreover, the Korean economy was believed to be strong. However, the value of the Korean won dropped by 50 percent between the end of December 1996 and the end of December 1997 when Korea experienced a financial crisis in 1997. The economic crisis of 1997–1998, after three decades of unprecedented economic growth, was evident. The outstanding external debt reached US\$159 billion in December 1997, real GDP growth rate declined by 7%, and unemployment rate exceeded 8% in early 1998 from being less than 3% in the early to mid-1990s. The request by the Korean government for a three-year stand-by credit from the IMF amounting to approximately \$21 billion was approved on December 5, 1997.

[Insert Figure 2 here]

Figure 2 indicates, despite the economic crisis, the remarkable economic growth of Korea during the period (1993–2003) under consideration in this paper. Per capita income increased from \$8,177 in 1993 to \$12,720 in 2003. This period of rapid change provides an extraordinary opportunity for examining the relationship between economic growth and income distribution and mobility in Korea.

Although the Korean economy suffered severely from the Asian financial crisis, it was known for its rapid recovery from the crisis (Yoshitomi, 2003; Koo and Kiser, 2001). However, it can be expected that the impact of the crisis on firms would differ in accordance with the characteristics of various firms. The industrial policies for firms with different-sized classes underwent a dramatic transformation in the post-crisis period. As a result of the recovery policy, large-scale enterprises (LSEs) succeeded in necessary downsizing in the immediate aftermath of the financial crisis and grew rapidly in the post-crisis period, particularly in the export market. On the other hand, small and medium enterprises (SMEs) continued to suffer from the effects of the recession and, in particular, in the domestic market (Oh et al., 2008). Consequently, pay inequality increased over the entire industry, and differences with respect to locations and industries were distinguished.

The heterogeneous impact of the financial crisis in the form of increased pay inequality on firms according to their size and location was the motivation for addressing the relationship between inequality and industry growth in the current study. Therefore, this paper examines pay structure and pay inequality between 1993 and 2003 in the Korean manufacturing industry using Theil's T-statistic. As indicated in Table 1, the manufacturing industry accounts for one of the large shares of the Korean industry. The dataset is derived from the Annual Report on Mining and Manufacturing Survey in Korea. It includes firms with five or more employees in 580 manufacturing industries classified by the Korean Standard Industrial Classification (KSIC) at the five-digit level.

[Insert Table 1 here]

Pay inequality can be investigated in terms of the location, size, R&D investment, and export activity and industry sectors of the firm. Further, we evaluate the manner in which the Asian financial crisis and policies for recovery impacted pay inequality. This paper studies the change in pay structure and inequality from a comparative perspective. First, the tendency of a relationship between pay inequality and economic growth between 1993 and 2003 is examined. Second, firms are categorized in terms of industry sectors, locations, and size, and then differences and characteristics are identified. Finally, a comparison is made between the analyzed inequality distribution and economic growth, the position of Korea according to Kuznet's theory is identified, and the associated implication is obtained.

### **III. Review of Literature**

Although Kuznets hypothesized the effect of growth (or development) on inequality, subsequent literature reversed this causal relationship. Empirical work seeking to confirm or reject the hypothesis put forward by Kuznets has proliferated in recent years, using both pooled and panel data in an attempt to highlight the relationship across countries and over time. The majority of this empirical work found a consistent, negative relationship between inequality and growth, typically based on multivariate cross-country regression models in which inequality is one variable determining economic growth. For example, Birdsall, Ross and Sabot (1995) found that egalitarianism was a key ingredient in the recipe for rapid growth in East Asia. Surveying twenty-three different studies, Benabou (1996) concluded that initial inequality is detrimental to long-run growth.

In 1998, Klaus Deininger and Lyn Squire disrupted the emerging consensus with a study based on their ambitious new global inequality dataset compiled for the World Bank from disparate household surveys of 108 countries since 1950. Based on the new data, Deininger and Squire (1998) found no evidence for the inverted U-shaped curve given by Kuznets. Using the same data and panel specification, Forbes (2000) found that initial inequality leads to higher subsequent rates of growth. However, several authors indicated severe problems with the new data, thereby casting a shadow over conclusions drawn from it. Galbraith and Kum (2002) reveal the manner in which problems with the Deininger and Squire data lead to multiple and contradictory conclusions regarding the relationship between inequality and growth (ranging from an upright to inverted U-shaped curve to positive and negative linear ones). It must be mentioned that the focus in the abovementioned studies is yet on a unidirectional



causal relationship between growth and inequality. For a majority of the countries, the negative relationship appears to remain intact despite questions regarding causality and endogeneity.

There are a number of competing theories that explain the between-firm wage dispersion. The efficiency wage theory argues that paying a wage premium may be profitable for firms because high wages can reduce monitoring costs, discourage turnover, attract a higher quality pool of applicants, and foster employee loyalty. Hence, wage dispersion across firms is observed when firms differ in their ability to monitor or motivate their workers, bear the cost of turnover, or measure labor quality. The theory of insider controls provides another institutional explanation for demand-related wage variation. If firms possess product market power and their workers are able to bargain for a share of the rents, cross-firm differences in rents or in the ability of workers to extract rents generate wage differentials among firms.

Although efficiency wage and insider theories explain why wages may be set above their market-clearing levels, their predictions for the impact of a wage premium on firm performance differ. Efficiency wages are compatible with profit maximization because they are intended to increase labor productivity. However, rent-seeking activities of insiders undermine the financial performance of the enterprise because these activities have no effect on worker performance. These competing theories of between-firm wage dispersion have been tested empirically; however, the extent to which wage dispersion is attributable to competitive versus noncompetitive factors remains unresolved. In this paper, merely examining the tendency of pay inequality in Korea between 1993 and 2003 and then comparing with sectors and regions provides numerous implications for the industrial policy of Korea.<sup>2</sup>

There has been a large volume of studies on pay distribution in Korea since the late 1970s. Although estimates of pay inequality differ slightly depending upon the data used, a majority of these studies agree that pay inequality increased in the 1990s, particularly since after the financial crisis wealth is far less equally distributed than pay (Lee & Hwang, 1998; Lee, 2000). There is no consensus on the direction of pay inequality over the path of economic growth. The results suggest among others rising inequality (Kim & Ahn, 1987); inverse-U type curve (Choo, 1993); and falling inequality (Kim & Topel, 1995; Fields & Yoo, 2000).

Kim & Topel (1995) studies the evolution of labor markets in Korea during 1971-86, when Korea experienced rapid economic growth and structural change. The authors are interested to know how labor market adjusted to structural change and how wage and income inequality change during economic development. The findings are: (i) advancing productivity drove the transformation, (ii) sectoral neutrality of wage growth and employment, (iii) high sectoral mobility of worker, (iv) high inter-firm mobility, and (v) weak evidence of increased inequality during initial stage of industrialization. In sum, result here is not supporting Kuznets conjecture due to purposeful industrial policy. In a similar study but based on more recent data, Field & Yoo (2000) show that the Korea's exceptional economic growth was coupled with an even more exceptional fall in labor income inequality. The authors quantify the importance of factors contributing to the fall of labor income inequality. They find that job tenure, gender, years of education and occupation explain the level of income inequality, while years of education, industry, occupation and experience explain the change in income inequality.

---

<sup>2</sup> Due to the space constraint, issues of efficiency wage policy will be discussed in a future study.

Since in the situation of a financial crisis, certain institutions express interest in enterprises like the Federation of Korean Industries (FKI) that solicits further flexibility of the labor market (FKI, 2000), it is doubtful whether this argument would be appropriate for the Korean economy, where job mobility has been rather restricted as compared with a majority of the developed economies. With regard to pay inequalities, Stiglitz (1999) admits that pay inequality tends to rise in periods of economic crises, structural adjustment, and output contractions. The increase in pay inequality might be stronger when labor market is subject to restricted mobility.

Although all available measures indicate widened pay inequalities in Korea during 1997–1999 (Yoo and Kim, 2002) due to the increase in the number of the irregular workers and unemployment rate, interpretations of the situation of pay inequalities since 2000 appear to depend on the survey methods that were utilized. For example, a measure such as the Gini coefficient based on the households of urban workers indicates that the Gini coefficient increased from 0.307 in 1996 and 0.296 in 1997 to 0.311 in 1999; however, it decreased to 0.301–0.303 in 2000 and 2001. This decline is presumably due to increased public transfer and decreased unemployment rate; meanwhile, a majority of other measures indicate that the Gini coefficient has been more or less stable since 1999 (Park et al., 2002; Yoo and Kim, 2002).

However, a majority of previous researches mainly focus on pay inequality at a point of time measured by certain inequality indices. Although this snapshot view of pay inequality receives attention from the public, it provides little information regarding the nature and direction of pay inequality. Different from previous studies, this paper attempts to analyze pay inequality using Theil's T-statistic through a comparison with several between and within units. First, this paper examines the tendency of pay inequality with economic growth between 1993 and 2003. This period includes both pre- and post-crisis periods. Second, we divide the data on the basis of industry sectors, firms' location and size, etc., and then determine pay inequality differences and characteristics. Finally, the effects of firm dynamics on pay inequality will be analyzed in greater detail.

It should be noted that previous studies has pointed that the cause of rising pay inequality are: (i) skill-biased technical change in the production methods as result of gross job creation and destruction, employment reallocation, and shift in structure of labor demand (Davis & Haltiwanger, 1991; Bound & Johnson, 1992); (ii) acceleration of international trade among countries from the supply response to increased demand that produces increasing wage inequality which ultimately produce increasing equality (Murphy & Welch, 1991) or (iii) decline in unionization that lowered earnings differentials across industries and gender (Freeman, 1991). Acemoglu (2002) found the faster increase in the supply of skills in Europe, the role of Europe's labor market institutions and investment in education and technologies to reduce skill-biased technical change preventing wage inequality from increasing. These are the three most popular explanations for the different inequality trends in the US and UK. Gottschalk and Smeeding (1997) found wage inequality increasing over time and the trend to be different across countries. Countries with centralized wage bargaining are more equal. It is affected by demand for skill, returns to education, experience and institutional constraints on wage. One possible direction of research in this area would be to assess the observed rising pay inequality according to these potential sources. We elaborate with these potential sources, however, a detailed analysis is beyond the scope of this study and it needs to be treated separately.

As mentioned above, the empirical relationship between economic growth and distribution of inequality hypothesized by Kuznet is unclear and it follows a country specific path. Korea is one country that it could successfully couple economic growth and pay equality in the period of its industrialization. This is opposed to what Kuznets hypothesis predicts but yet it is believed that factors such as education, industry, occupation, and experience are important in determining the level of inequality over time. Despite this discrepancy between Kuznets and empirical result and the controversy over the direction of pay inequality, we try to locate Korea's position according to the Kuznets curve to establish such relation. This is justified by the widening pay inequality in recent years and availability of updated data.

#### IV. Methodology

Theil's T-statistic is one of the several frequently-used indices of inequality that provides a useful alternative approach to measuring the change in earnings inequality within a single country and to comparing degrees of change across countries.<sup>3</sup> The method has been intensively used in analysis of the income distribution of households and individuals. Theil's T-statistic does not rely on surveys, but on the regularly-gathered official measures or register data of income by region and sector. This method is used to compute the between-group component of Theil's T-statistic across province-sector cells for both locations and industry sectors. Theil's T-statistic is a rather simple measure of inequality, relying only on two pieces of information regarding each cell: its weight in total population (or employment), and the ratio of average income within the cell to average income in the country as a whole.

The following formulae provide the algebraic computation behind Theil's T-statistic<sup>4</sup>. While these particular equations use income as the variable of interest, Theil's T-statistic can address any number of quantifiable phenomena. When household data is available, Theil's T-statistic is written as

$$(1) \quad T = \sum_{p=1}^n \left\{ \left( \frac{1}{n} \right) * \left( \frac{y_p}{\mu_y} \right) * \ln \left( \frac{y_p}{\mu_y} \right) \right\},$$

where  $n$  is the number of individuals in the population,  $y_p$  is the income of the person indexed by  $p$ , and  $\mu_y$  is the average income of the population. If every individual has exactly the same income,  $T$  will be zero; this represents perfect equality and is the minimum value of Theil's T-statistic. If one individual has all the income,  $T$  will equal  $\ln(n)$ —this represents utmost inequality and is the maximum value of Theil's T-statistic. Thus, unlike the Gini coefficient, Theil's T-statistic is not limited to values within the 0-1 interval.

If members of a population can be classified into mutually exclusive and completely exhaustive groups, then the Theil's T-statistic comprises two components—the between-group component ( $T'_g$ ) and the within-group component ( $T^{w_g}$ ) that can be expressed in the following manner:

<sup>3</sup> For a recent review of inequalities and their measurement, see Heshmati (2004).

<sup>4</sup> Equations (1), (2), and (3) closely follow Pedro Conceição, James K. Galbraith, and Peter Bradford; "The Theil Index in Sequences of Nested and Hierarchic Grouping Structures: Implications for the Measurement of Inequality through Time, with Data Aggregated at Different Levels of Industrial Classification," *Eastern Economic Journal*, Volume 27 (2000), Pages 61-74.

$$(2) \quad T = T'_g + T_g^w$$

When aggregate data is available instead of individual data,  $T'_g$  can be used as a lower bound for the value of Theil's T-statistic for population. The between-group element of Theil's T can be written as:

$$(3) \quad T'_g = \sum_{i=1}^m \left\{ \left( \frac{p_i}{P} \right) * \left( \frac{y_i}{\mu} \right) * \ln \left( \frac{y_i}{\mu} \right) \right\}$$

where  $i$  indexes the groups,  $p_i$  is the population of group  $i$ ,  $P$  is the total population,  $y_i$  is the average income in group  $i$  and  $\mu$  is the average income across the entire population.

$T'_g$  is bounded above by  $\ln(P/p_i(\min))$ , the natural logarithm of the total population divided by the size of the smallest group. This value is attained when the smallest group possesses all the resources. When data is hierarchically nested (i.e., every municipality is in a province and each province is in a country), Theil's T-statistic must increase or remain the same as the level of aggregation (i.e.,  $T_{\text{population}} \geq T'_{g(\text{district})} \geq T'_{g(\text{county})} \geq T'_{g(\text{region})}$ ). Theil's T-statistic for population equals the limit of the between-group Theil component as the number of groups approaches the size of the population.

Theil's T-statistic has properties that make it attractive for the type of calculation described above; in particular it is possible to add row and column elements in order to arrive at cross-sector and cross-province measures of inequality. It is also possible to look directly at the contribution to overall inequality of each cell, sector or province, and to gauge the yearly change in that contribution. Of course, the general comparison of the Theil index methodology is made by estimating pay inequality for individual persons among countries or regions. However, in the current study, we compare pay inequality by using firm-level data. Dong (2005) analyzed wage inequality and between-firm age in the 1990s by employing the Theil methodology, in which data of rural and urban firms were used. Galbraith (2004) evaluated pay inequality in 1979-1998 in the Indian manufacturing sector.

## V. Data

In this study, we examine the pay inequality in the Korean manufacturing industry according to the classifications of sector, region, and firm size from 1993 to 2003. The data used in this study was the unpublished plant-level data compiled from the Annual Report on Mining and Manufacturing Survey in Korea. The data encompasses all manufacturing plants with five or more employees in 580 manufacturing industries at the KSIC five-digit level. It was an unbalanced panel data with approximately 76,341-103,126 observations for each year.

In the survey data, the entry and exit of manufacturing plants were identified based on their appearance and disappearance over time. Entry and exit of plants due to spin-off, split, merger, and acquisition could not be identified from the available manufacturing plant-level database. A total of 300,916 distinct manufacturing plants were observed during the analysis period. As such, the data pertains to entering, exiting, and surviving plants. The data are available at the five-digit industrial classification level for the entire Korean manufacturing industry.

The total number of observations was 1,030,643. Manufacturing plants that had over 300 employees were denoted as firm size class 5; when the number of employees was between 300 and 100, the plants were classified as firm size class 4; when the number of employees was between 50 to 100, plants were classified as firm size class 3;

when the number of employees was less than 50 and over 20, plants were classified as firm size class 2; and when the number of employees was between 5 and 20, plants were classified as firm size class 1. The annual changes in the number of firms, the aggregated firm characteristics, and the number of employees for each group were also described.

The descriptive statistics of the data for each year of observation is reported in Table 2. In addition to the number of observations in each year, the distribution of each variable—including the number of workers, cost, and incomes—are presented. The number of observations increases over time, while the number of workers declines. The cost and its dispersion display an increasing trend; the same applies to income variables.

[Insert Table 2 here]

## VI. Results

First, we examine the relationship of pay inequality with economic growth between 1993 and 2003. We begin by examining the information provided by KSIC data at the five-digit classification level for Korea as a whole. Figure 3 presents Theil's T-statistic values resulting from this exercise.

[Insert Figure 3 here]

It was found that the inequality trend measured by Theil's T-statistic remained stable and consistent in the early 90s and that it was declining slightly. However, we observe that the graph upswings sharply in the years 1993–2003, remains fairly steady in 1993–1996, then increases rapidly in 1996–1998. Thereafter, pay inequality in the manufacturing industry remained steady till the year 1999–2003, after which it began creeping upward. This is definitely different from the “augmented” Kuznets Curve that indicates that inequality increases with an increase in economic growth levels, as found in the United States, Japan, and United Kingdom. The Korean economy did not attain the economic level of developed countries—the economy was merely reformed and maintained. If the economy had been stabilized and reformed in a proper manner, the inequality should have become similar to that before the crisis or decreased steadily. However, as seen in Figure 3, the inequality increases drastically since the financial crisis. The rather short period of radical economic reform does not result in concurrence of economic growth and inequality but a greater increase in inequality than economic growth. Comparing with 0.005 increasing of U.S. and 0.01 increasing of EU 22 countries, a 0.044 increasing in pay inequality in Korea is quit significant amount between 1996 and 1998. Therefore, certain difficulties, as stated above, can be expected from such a reform and, based on political consideration of these facts, wage distribution and economic development plans must be considered carefully.

In order to further examine whether inequality in Korea is primarily a geographic or location issue, we aggregate the location-sector elements into two distinct categories—locations and sectors. The two-digit industrial classification available at the location level is similar to the three-digit classification available at the national level. The plants level data are available for sixteen categories across five major states for this

period of study. The location of plants can help in explaining the rising pay inequality through several channels such as difference in education, skill, labor productivity, demand and supply of labor, export activity of the firms and differences in development of consumer and producer prices, as well as differences in tax rates.

As explained above, there exists (i) inequality across sectors within states, (ii) inequality across locations, (iii) inequality across locations within sectors, and (iv) inequality across sectors. Through this trend of Theil values, we find that in this data, inequality has been steadily increasing after 1997 when the Korean economy faced financial crises; moreover, in the 2000s, pay inequality has continued to increase, taking a sharp jump in the final year of observation to levels much higher than in the early 1990s. Thus, a temporary law for fostering venture business was enacted in 1997, and the government intervened strongly in the entire process of certification and support for specific sectors. As a result, the pattern suggests that the regional element of inequality in Korea began to rise before the purely sectoral increases became pronounced and also before major economic reforms occurred. The next issue that is examined is which of the specific firm sizes, regions, and sectors have contributed the most of rising inequality. We first examine the contribution of individual states to the Theil index. Figures 4, 5, and 6 below present this information.

Figure 4 presents the contribution of firm size to pay inequality in Korea—firm sizes divided by the number of employees. There are a total of five defined firm sizes and the categories of the number of employees of the firms are 5–20, 20–50, 50–100, 100–300, and over 300. Firm sizes whose pay rates exceed the average constitute elements above the zero line, while states with pay rates below the national average constitute elements below the zero line. The size of the component attributable to each region and firm size represent the combined influence of labor force and relative income, and it is the change in these influences that is highlighted in the figure. The firms are ranked by the size of their contribution to interstate inequality in the first year under observation.

[Insert Figure 4 here]

It is evident from the above figure that the pay inequality of small-size firms has increased rapidly since 1998. This result, which is related to the industrial policies for firms with different-sized classes, changed dramatically in the post-crisis period. As a result of the recovery policy, LSEs succeeded in the necessary downsizing during the immediate aftermath of the fiscal crisis and grew rapidly in the post-crisis period, particularly those firms that specialized in the export market. In the case of LSEs, their contribution did not change even with the increase in overall equality. On the other hand, the contribution of SMEs increases with an increase in the entire inequality. It is indicated that SMEs account for a considerable amount of the position. Nevertheless, the fact that their contribution has increased since 1997 indicates that SMEs were continuing to suffer from the effects of the recession, particularly in the domestic market. The impact of the economic crisis on SMEs was of greater severity. As an indication of this problem, the number of SME bankruptcies in 1998 reached 22,800, while it was 11,600 in 1996 (Gregory et al, 2002). The short-term debt in foreign currencies, which was a major factor of causing bankruptcies in certain industries, resulted in a series of bankruptcies over the entire economy.

Figure 5 presents the contribution of regions to pay inequality in Korea. Location is divided into 5 areas: (1) Seoul areas, (2) Gyeongsang, (3) Jeolla, (4) Chungcheong, and

(5) other areas. Seoul areas and Gyeongsang make the largest contribution to inequality during the entire period. This is a surprise as it is the most advanced industrial area in Korea and all leading industrial houses have established manufacturing facilities in these regions. Labor in Seoul areas is also highly organized; therefore, almost all industrial groups in Seoul areas and Gyeongsang have pay rates that are above the all-Korea average level.

[Insert Figure 5 here]

An examination of the negative Theil elements reveals that pay rates in two of the areas have changed rapidly. A negative element is suggesting that the Theil elements are under the average of the Theil statistics. The pay rates of Jeolla and the others fell below the national average in certain periods. This could be primarily due to the lack of large enterprises from either public or private sectors in these two states. A majority of the industrial establishments in these areas are rather small and belong to traditional sectors like food processing.

Finally, a majority of the smaller states make either no contribution or make a small negative contribution to the Theil index. The smallness of their contribution in absolute value is indicative of their low weight age in the overall employment in the Korean manufacturing industry. The increase in Theil index from 1997 is primarily attributed to an increase in the Theil element for generation of electrical energy, distribution of electrical energy, manufacture of computers and computer-based systems, manufacture of general purpose non-electrical machinery, and manufacture of motorcars. These sectors are specialized in both the domestic and export markets.

[Insert Figure 6.a and 6.b here]

All the sector areas obtained a boost after the liberalization of policies regarding production capacities and industrial licensing. It can be inferred from this evidence that one effect of the reforms was to strengthen the market position of those sectors that were already comparatively strong but heterogeneously so; thus, this increased the dispersion of pay in the manufacturing industry across Korea as a whole since the Asia Crisis. Figure 6.a and 6.b indicate, in aggregate and disaggregate forms respectively, the distribution of two-digit enterprises such as basic metal industries, rubber, plastic, petroleum and coal, and electricity generation and distribution, as well as the large-scale modern enterprises such as chemicals, transport equipment, and machinery and equipment. These are the major winners and contributors to the income inequality in the manufacturing industry. Manufacturing sectors such as 29-33 and 20-26 are the long-standing losers. Of particular interest is the increasing contribution of the Theil element in the electricity sector over the years, particularly as the sector has become deregulated and increasingly able to assert its monopoly power. Undoubtedly, the increase in the strength of the power sector is the single largest and perhaps the only significant contributor to the increase in inter-sectoral inequality in the Korean manufacturing industry under economic reform.

As seen in Figures 7 and 8, the inequality of firms evolved over time depending on the aggregate R&D and export activities of firms.

[Insert Figure 7 here]

After reforming the structure of the economy, the inequality shares of the exporting group of firms have increased slightly. However, the increase in inequality for the export-oriented group led the fostering policy of the economy to concentrate on the recovery of financial deprivation through trade.

[Insert here Figure 8]

Figure 8 reveals that the increase in the pay inequality influenced the R&D investment of firms. In particular, the inequalities of R&D-intensive firms have increased since the financial crisis of Korea because the SME-fostering policies of the Korean government, in the post-crisis period, supported and financed venture businesses. On the other hand, the inequality rates of firms not conducting R&D show no variation before and after the crisis period. Instead, their inequality has increased more since the economy became stable.

## VII. Conclusions and Policy Implications

Since the financial crisis of 1997, there has been an increase in structural reform in Korea. A higher pay inequality is attributed to relatively large sized firms, capital region, R&D-oriented firms as well as those in high technology manufacturing industries. These firms products were increasingly oriented toward the external market underwent a transformation. Using datasets pertaining to 1993–2003, this paper analyzes pay inequality in the Korean manufacturing industry according to the firms' location, size, R&D investment, export activity and industry sector. In addition, we evaluate the manner in which the Asian financial crisis and policies for recovery impacted pay inequality.

First, this paper examined the relationship of pay inequality with economic growth between 1993 and 2003. By using Theil's T-statistic, it is shown that the overall pay inequality increased and the persistent component of economic growth dominantly shapes the overall pay inequality. We can safely conclude that inequality in the wages of the Korean manufacturing industry have increased since 1996: both aggregate measures for Korea and different locations agree on this aspect. However, the Korean manufacturing industry retains a large number of the characteristics of a planned and dual economy, with a strong influence of the firm structure on relative wages and their distribution.

Second, industry sectors, firms' size and location were identified and then their differences and specific characteristics were established. The result indicates certain patterns of pay inequality among industrial sectors, locations, and firm size classes. We found a positive and significant relationship between pay inequality and firm size, regional location, R&D investment, export activity and industry sectors. This holds even when we control for unobservable and observable individual firms, time periods, and firm characteristics. The decomposability property of the Theil index enables us to reveal that pay inequality in the Korean manufacturing industry has increased across sectors, size classes and regions, although more strongly across industrial sectors and size classes.

Finally, we compared the inequality distribution with economic growth and located the position of Korea according to Kuznet's theory and obtained the related implication. It was indicated that the increase in inequality accelerated in the period following the introduction of economic reforms, after controlling for changes in the



level of real per capita income. It appears that a large portion of rising pay inequality in the manufacturing industry in the post-reform period can be attributed to rising relative pay in the large high-technology industry sectors located in the capital city areas. The findings support the hypothesis of an "augmented" Kuznets Curve, according to which certain developed countries are found on an upward-sloping addendum to the original curve. Inequality is indispensable to economic growth, yet Korea experienced an extremely rapid change in the inequality and industrial structure. While a majority of the developing and industrialized countries are found on the downward portion of Kuznets' inverted U-shaped curve, inequality has been raising with increased income levels. This phenomenon is observed in high-income countries such as Japan, United States, and United Kingdom. However, since Korea is not such a high-income country, the share and rate of change in inequality must be monitored to keep it at a low and stable level. The policies must be designed such that their implications are sought and desired.

From the viewpoint of size of firms, the inequality in firms with 5–20 employees increased rapidly, considering the total share of the inequality. As compared with that before 1996, pay inequality in small-sized companies relatively worsened, which gave rise to lowering the activities of companies and an increase in their risk. Therefore, a Fair Standard Act Policy like the minimum wage system, which can preserve the initial satisfaction of labor supplements, is required to enable the resolving the issue of pay inequality. However, the effects of minimum wage will depend on to what extent workers are affected. The effect will be stronger if a substantial portion of the workers are earning around the minimum wage level in the data. In order for corporate tax policies targeting small and medium enterprises to be effective in the direction of decreasing pay inequality they must be accompanied by necessary mechanism to ensure such effects.

From the geographical perspective, the pay inequality in Seoul areas and Gyeongsang continued to contribute a large portion to the total inequality and, in particular, that of Seoul has considerably risen since 1997. Thus, firm-aiding policies, including tax reform and subsidy policies might be required to reduce the inequality gap among different areas. In addition, overall inequality of Fabricated metal, Chemicals, Electrical machinery, and Communication industry was found to rise. This indicates the fact that support policies in accordance with the features of each industry are required in order to reduce and finally eliminate pay inequality.

In summary, this paper presents various aspects on the recent rising pay inequality in Korea. Although pay inequality has been increasing in the manufacturing industry since 1997, particularly following the formal initiation of reforms, this increase cannot be accounted for strictly by increasing average incomes. The rise in inequality persists even when changes in average income among regions is fully controlled for. The crisis moved the Koreans economy from domestically oriented to an internationally oriented economy. Thus the rising pay inequality may be attributed to international trade and globalization. Since globalization affects industries with different degrees, the between industry pay inequality become more dominating than within industry pay inequality. Differences in industries exposure to international market allows to statistically test the strength in the correlation between pay dispersion and quantitative measure of globalization. In a separate study, we will investigate the relationship between firm dynamics and pay inequality in the same period. This will allow for estimating the effects of the characteristics of firms in terms of entry, exit, and organization structure on the level and development of inequality in pay. In addition

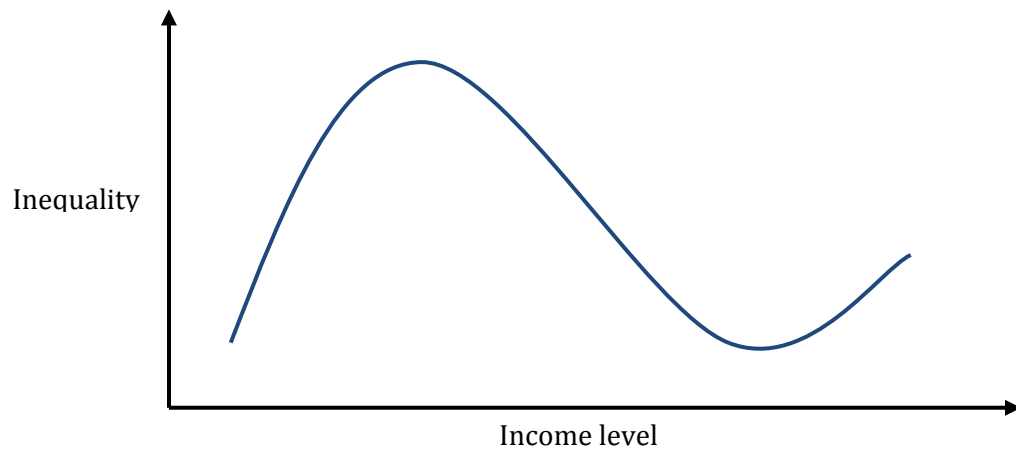
we will also analyze the causes and consequences of pay inequality in a more systematic and economical way and then we will be able to suggest policy implications more precisely.

## References

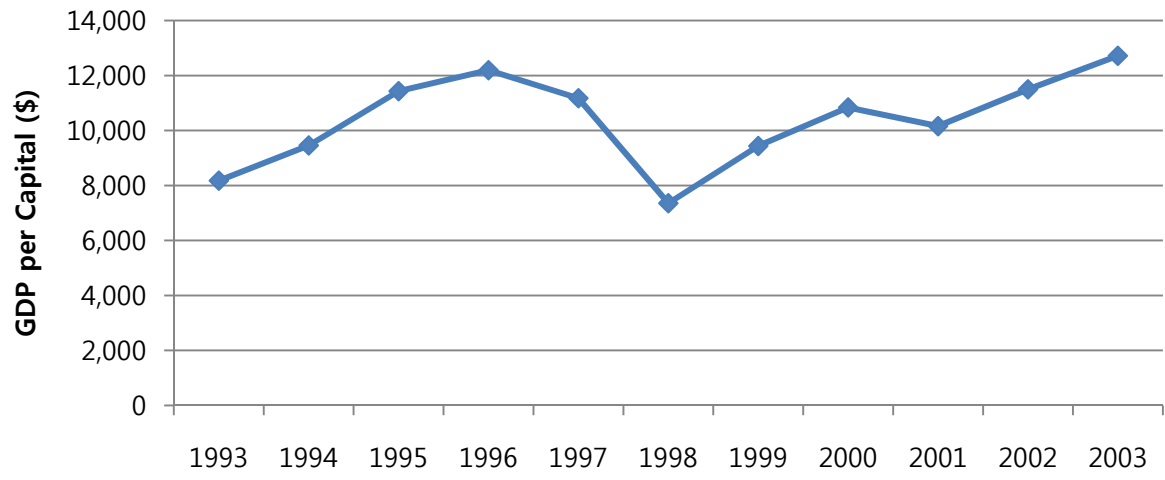
- Acemoglu, Daron (2002). "Cross-Country Inequality Trends". NBER Working Paper No. 8832. Cambridge, MA: NBER.
- Amsden, Alice H. (1989), "Asia's Next Giant: South Korea and Late Industrialisation," Oxford University Press.
- Bénabou, Roland (1996), "Inequality and Growth," in Bernanke, Ben and Julio Rotemberg, (eds.), NBER Macroeconomics Annual 1996 Cambridge and London, MIT Press.
- Birdsall, Nancy, David Ross, and Richard Sabot (1995), "Inequality and Growth Reconsidered: Lessons from East Asia," *World Bank Economic Review* 9, pp. 470-508.
- Bound, John and George Johnson (1992), "Changes in the Structure of Wages in the 1980's: An Evaluation of Alternative Explanations", *American Economic Review* 82(1), pp. 371-392.
- Choo, Hak Chung (1993), "Income Distribution and Distributive Equity in Korea," in Lawrence B Krause and Fun-Koo Park (eds.), *Social Issues in Korea: Korean and American Perspective*, Korea Development Institute.
- Conceição, Pedro, James K. Galbraith, and Peter Bradford (2000), "The Theil Index in Sequences of Nested and Hierarchic Grouping Structures," *Eastern Economic Journal* 27, pp. 61-74.
- Conceição, Pedro and James K. Galbraith (2001), "Toward an Augmented Kuznets Hypothesis," in James K. Galbraith and Maureen Berner, (eds.), *Inequality and Industrial Change: A Global View*, Cambridge University Press.
- Davis, Steve J. and John Haltiwanger (1991), "Gross Job Creation, Gross Job Destruction and Employment Reallocation", NBER Working Papers Series, Working Paper No. 3728, Cambridge, MA: NBER.
- Deininger, Klaus and Lyn Squire (1998), "New ways of looking at old issues: inequality and growth," *Journal of Development Economics* 57(2), pp. 259-287.
- Dong, Xiao-Yuan (2005), "Wage Inequality and Between-firm Wage Dispersion in the 1990s: A Comparison of Rural and Urban Enterprises in China," *Journal of Comparative Economics* 33, pp. 664-687.
- Fields, Gary and Gyeongjoon Yoo (2000), "Falling Labor Income Inequality in Korea's Economic Growth: Patters and Underlying Causes," *Review of Income and Wealth* 46(2), pp. 139-159.
- Federation of Korean Industries (2000), "Policy Proposals," October 10.
- Fischer, Stanley (1998), "The IMF and Asian Crisis," <http://www.imf.org> (March 20).
- Forbes, Kristin J. (2000), "A Reassessment of the Relationship between Inequality and Growth," *American Economic Review* 90(4), pp. 869-887.
- Freeman, Richard B. (1991) "How much has de-unionization contributed to the rise in male earnings inequality?", NBER Working Paper No. 3826, Cambridge MA: NBER.
- Galbraith, James K. and Hyunsub Kum (2002), "Inequality and Economic Growth: Data Comparisons and Econometric Tests," University of Texas Inequality Project Working Paper 21, Austin.
- Galbraith, James K., Deepshikha Roy Chowdhury, and Sanjeev Shrivastava (2004), "Pay Inequality in the Indian Manufacturing Sector, 1979-1998," University of Texas Inequality Project Working Paper 28, Austin.

- Gottschalk, P., and T.M Smeeding (2002). "Cross-National Comparisons of Earnings and Income Inequality." *Journal of Economic Literature* 35, pp. 633–687.
- Government of Korea. Letter of Intent (1997). Korean SMEs in the Wake of the Financial Crisis: Strategies, Constraints and Performance in a Global Economy.
- Gregory, Gary, Charles Harvie, and Hyun-Hoon Lee (2002), "Korean SMEs in the Wake of the Financial Crisis: Strategies, Constraints and Performance in a Global Economy," Economic Working Papers wp02-12, School of Economics and Information Systems, University of Wollongong, NSW, Australia.
- Heshmati, Alams (2004), "Inequalities and their Measurement," IZA Discussion Paper No. 1219, Bonn.
- Kang, Byung-Goo and Myeong-Su Yun (2003), "Changes in Korean Wage Inequality 1980–2000," WIDER International Conference on Inequality, Poverty and Human Well-Being, Helsinki, May 30-31.
- Kim, Dae Mo and Kuk Shin Ahn (1987), "The Determinants and Perception of Income Distribution in Korea," Mimeo.
- Kim, Dae il and Robert H. Topel (1995), "Labor Markets and Economic Growth: Lessons from Korea's Industrialization, 1970-1990," in Richard Freeman and Lawrence Katz (eds.), *Difference and Changes in Wage Structures*. National Bureau of Economic Research Comparative Labor Market Series, University of Chicago Press.
- Kim, Yong-Seong (2004), "Short-run versus Long-run Income Inequality," *KDI Working Paper*.
- Koo, Jahyeong and Sherry L. Kiser (2001), "Recovery from a Financial Crisis: The Case of South Korea," *Economic and Financial Review* IV (4), pp. 24–36.
- Kwack, Sung Yeung (1998), "Factors Contributing to the Financial Crisis in Korea," *Journal of Asian Economics* 9, pp. 611–625.
- Kuznets, Simon (1955), "Economic Growth and Income Inequality," *American Economic Review* 45, pp. 1–28.
- Lee, Joung-woo and Seong-hyeon Hwang (1998), "The Problems of Income Distribution and Related Policy Issues in Korea," *The KDI Journal of Economic Policy* 20 (1), pp. 153-230.
- Lee, Woo sung (2000), "Unequal Asset Ownership and Increasing Income Inequality," *Weekly Economy* 594, LG Economic Research Institute.
- Mah, Jai S. (2006), "Economic Restructuring in Post-crisis Korea," *The Journal of Socio-Economics* 35(4), pp. 682–690.
- Murphy, Kevin M., and Finis Welch (1991), "The Role of International Trade in Wage Differentials," in *Workers and Their Wages*, M. Koster, ed. (Washington, DC: The AEI Press), pp. 39-69.
- Oh, Inha, Almas Heshmati, Chulwoo Baek, and Jeong-Dong Lee (2008), "Comparative Analysis of Firm Dynamics by Size: The Korean Manufacturing," *Productivity, Efficiency, and Economic Growth in the Asia-Pacific Region*, Springer.
- Okun, Arthur (1975), "Equality and Efficiency: The Big Tradeoff," Washington: Brookings Institution Press.
- Park, Chanyong, Seog-Hoon Kang, and Taewan Kim (2002), "Income Inequality and Poverty Level in Korea," *KIHASA Working Paper*, Seoul.
- Postel-vinay, Fabien and Jean-Marc Robin (2002), "Equilibrium Wage Dispersion with Worker and Employer Heterogeneity," *Econometrica* 70, pp. 2295–2350.

- Stiglitz, J. (1999), "Whither reform? Ten years of transition," Paper Prepared for the Annual World Bank Conference on Development Economics. Washington, DC.
- Theil, Henri (1972), "Statistical Decomposition Analysis: With Applications in the Social and Administrative Sciences," Amsterdam-London: North Holland Publishing Company.
- World Bank (1993), "The East Asian Miracle: Economic Growth and Public Policy," Oxford University Press.
- Yoo, Kyung-Joon and Dae-Il Kim (2002), "Structural change in income distribution since the foreign exchange crisis and the impact of the redistribution policy", KDI Working Paper.
- Yoshitomi, Masaru (2003), "Post-Crisis Development Paradigms in Asia," Asian Development Bank Institute.



**Figure 1. The Augmented Kuznets Curve**



**Figure 2. GDP per capita of Korea, 1993-2003 (in 2000 prices).**

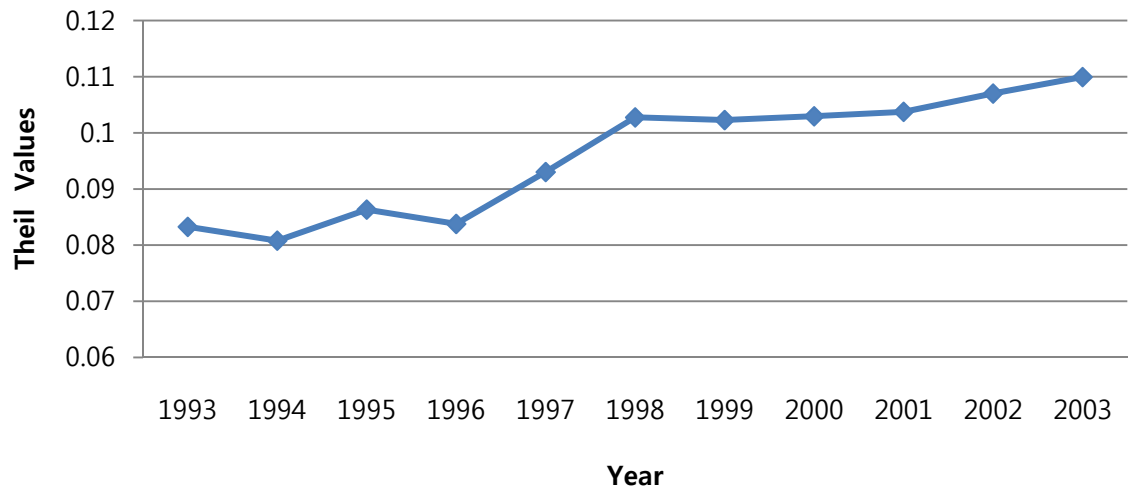


Figure 3. Theil's T-Statistic measure of pay inequality for Korean manufacturing industry, 1993-2003.



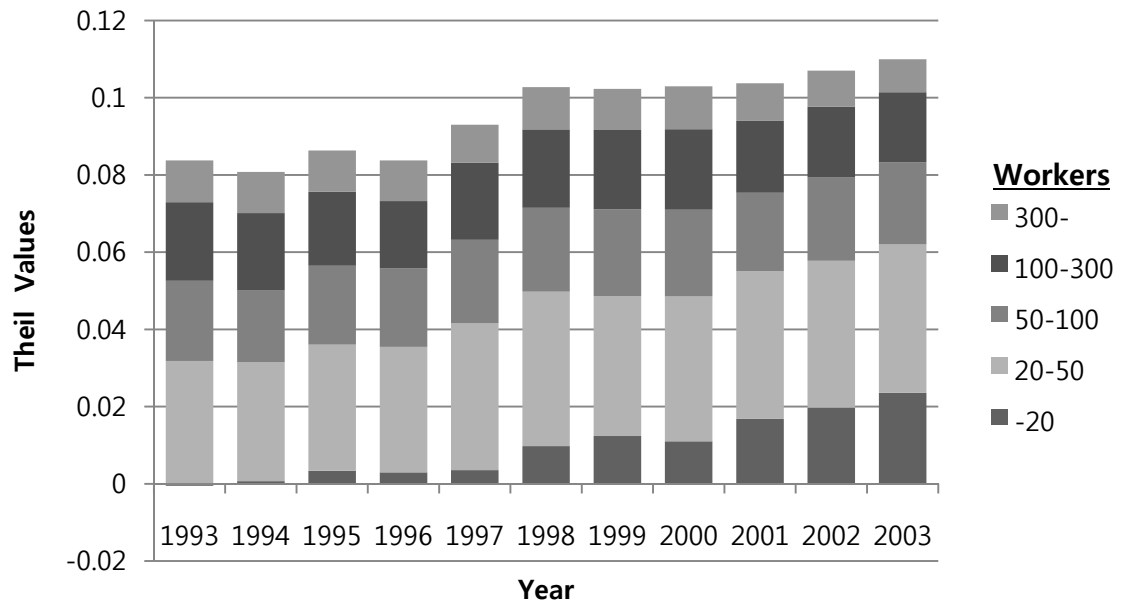


Figure 4. Pay inequality in the Korean manufacturing industry by firm size, 1993-2003.

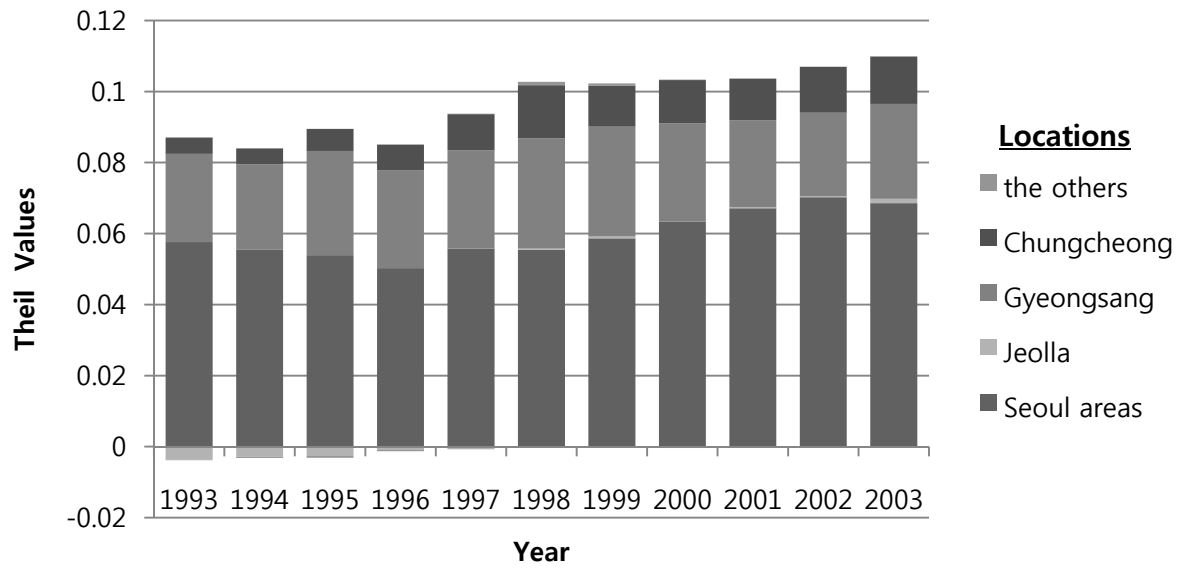


Figure 5. Pay inequality in the Korean manufacturing industry by location, 1993-2003.

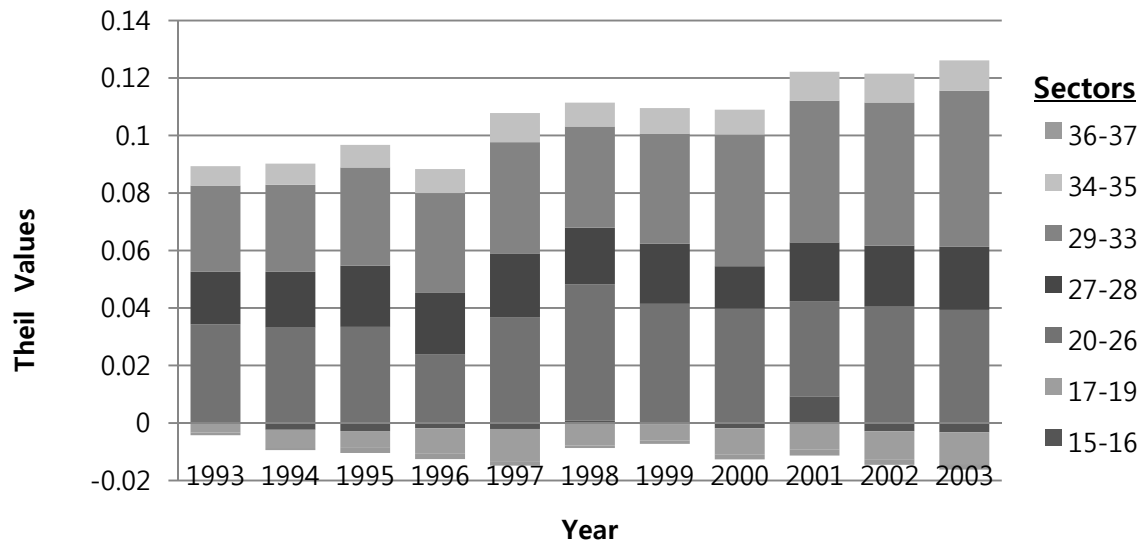
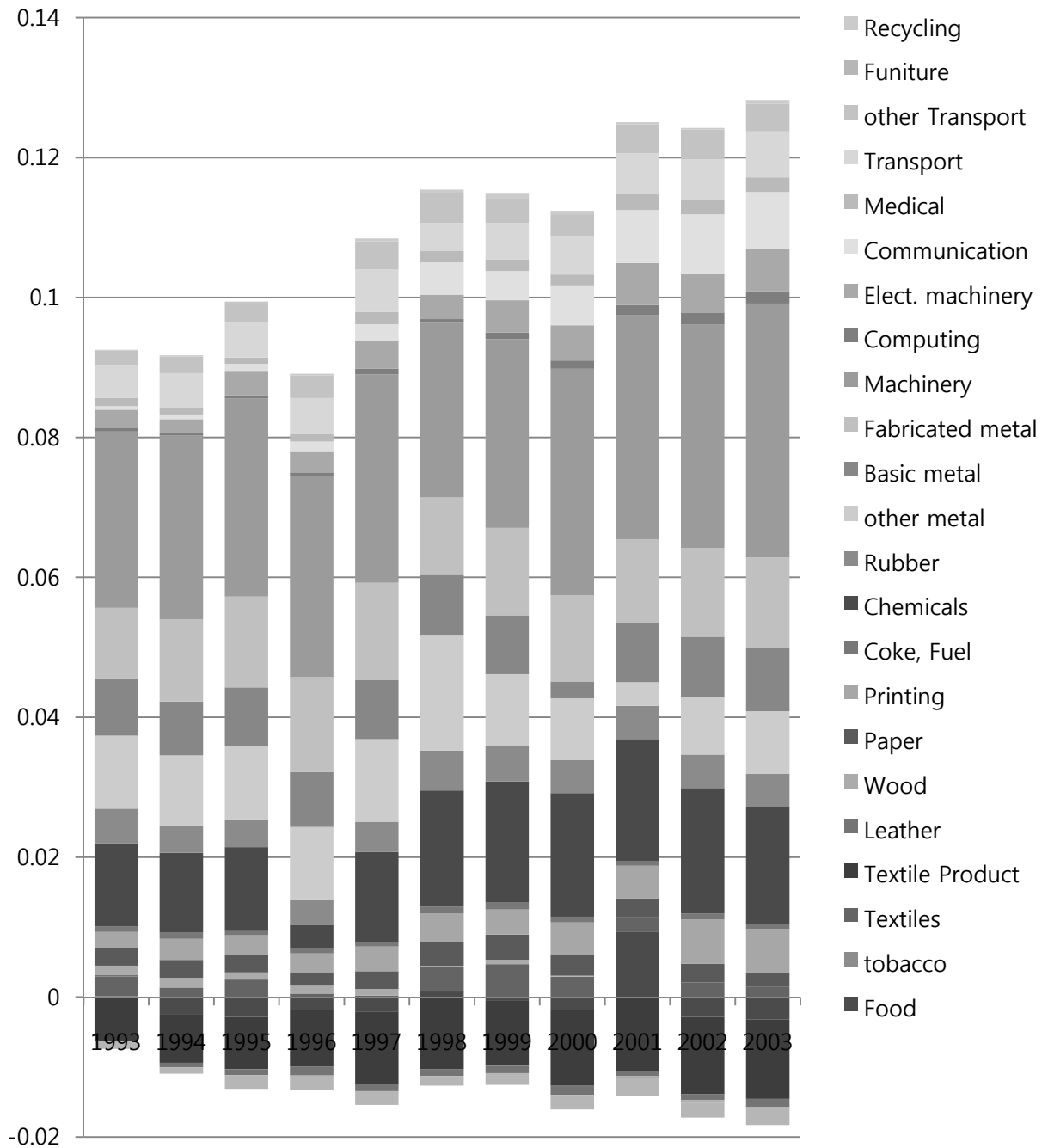
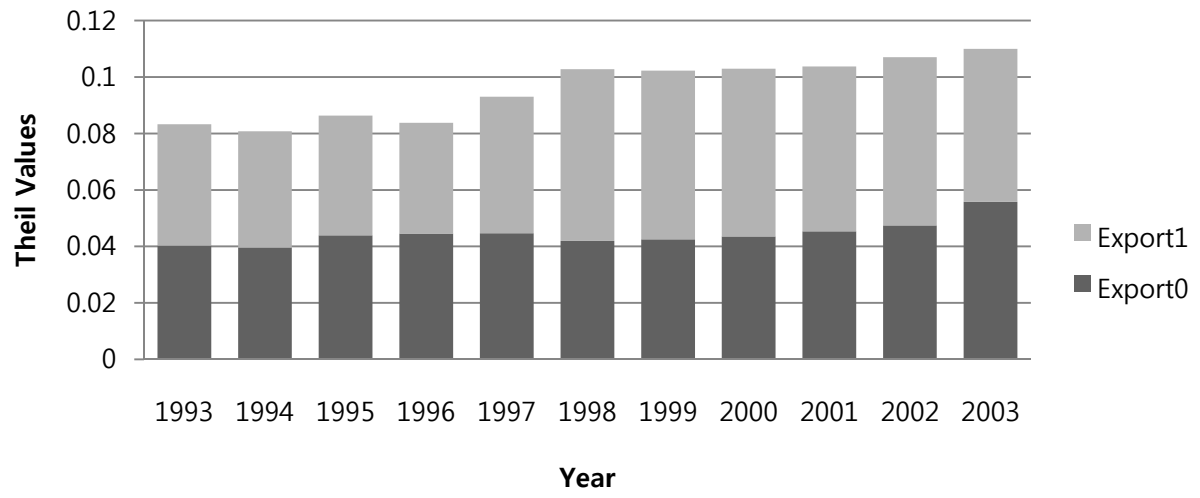


Figure 6.a Pay inequality in Korean manufacturing industry sectors at the aggregated two-digit level, 1993-2003.



**Figure 6.b Pay inequality in Korean manufacturing industry sectors at disaggregated two-digit level, 1993–2003.**



**Figure 7. The evolution of inequality over time by export activities (Export0=non-exporter, Export1=exporter), 1993–2003.**

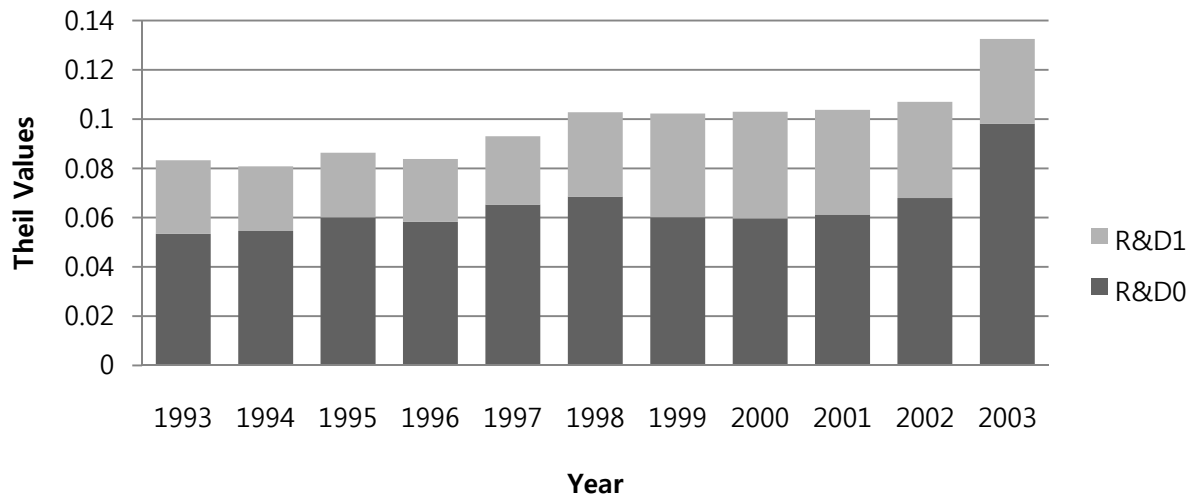


Figure 8. The evolution of pay inequality over time by R&D investment (R&D0=non-investor, R&D1=investor), 1993-2003.

**Table 1. The Development of Labor Force in Korea and its Distribution (in 1000)**

	1993	1994	1995	1996	1997	1998	1999	2000	2001	2002	2003
Total labor force in 1000	12,245	12,583	13,634	14,006	13,470	2,416	12,920	13,604	14,109	14,608	14,729
Manufacturing (in 1000 (%))	3,884 (31.7)	3,695 (29.4)	3,708 (27.2)	3,748 (26.8)	3,312 (24.6)	2,986 (24.1)	3,170 (24.5)	3,333 (24.5)	3,415 (24.2)	3,392 (23.2)	3,411 (23.2)
Mining (in 1000 (%))	5,179 (1.3)	4,359 (1.2)	3,975 (1.1)	3,581 (1)	2,989 (0.9)	2,396 (0.8)	2,197 (0.7)	2,141 (0.6)	2,090 (0.6)	2,041 (0.6)	2,053 (0.6)

**Table 2. Descriptive statistics of firm level data over time, 1993–2003**

Year	Observations	Variables	Mean	Std. Dev.	Sum	Numbers
1993	85731	worker	31.78	208.75	2724481	85731
		cost	379.25	4220.84	32513354	85731
		income	8.63	3.59	739980	85731
1994	88328	worker	31.31	219.12	2765299	88328
		cost	423.51	5402.72	37407943	88328
		income	9.69	3.99	855686	88328
1995	93267	worker	30.19	220.48	2815581	93267
		cost	466.23	5763.59	43483779	93267
		income	10.99	4.71	1024909	93267
1996	94030	worker	29.39	231.49	2763178	94030
		cost	502.28	6389.42	47229078	94030
		income	12.26	5.20	1153255	94030
1997	88996	worker	27.67	207.74	2462853	88996
		cost	519.29	6006.66	46214575	88996
		income	13.20	5.98	1175073	88996
1998	76341	worker	27.79	191.08	2121474	76341
		cost	511.08	6203.56	39016613	76341
		income	12.74	6.174	972350.86	76341
1999	88140	worker	26.65	181.81	2349268	88140
		cost	506.89	6325.64	44677291	88140
		income	13.24	6.26	1167058	88140
2000	95341	worker	26.36	182.19	2513212	95341
		cost	554.16	6956.60	52834699	95341
		income	14.47	6.90	1379405	95341
2001	103126	worker	24.27	150.81	2502568	103126
		cost	549.81	6609.62	56699977	103126
		income	15.83	7.59	1632992	103126
2002	107459	worker	23.64	142.69	2540690	107459
		cost	585.83	6835.44	62952772	107459
		income	17.41	8.47	1871169	107459
2003	109884	worker	23.55	146.99	2587851	109884
		cost	618.99	7598.76	68017011	109884
		income	18.46	9.10	2028859	109884