

Clark, Gregory; Hamilton, Gillian

Working Paper

Survival of the richest: the Malthusian mechanism in pre-industrial England

Working Paper, No. 06-15

Provided in Cooperation with:

University of California Davis, Department of Economics

Suggested Citation: Clark, Gregory; Hamilton, Gillian (2006) : Survival of the richest: the Malthusian mechanism in pre-industrial England, Working Paper, No. 06-15, University of California, Department of Economics, Davis, CA

This Version is available at:

<https://hdl.handle.net/10419/31330>

Standard-Nutzungsbedingungen:

Die Dokumente auf EconStor dürfen zu eigenen wissenschaftlichen Zwecken und zum Privatgebrauch gespeichert und kopiert werden.

Sie dürfen die Dokumente nicht für öffentliche oder kommerzielle Zwecke vervielfältigen, öffentlich ausstellen, öffentlich zugänglich machen, vertreiben oder anderweitig nutzen.

Sofern die Verfasser die Dokumente unter Open-Content-Lizenzen (insbesondere CC-Lizenzen) zur Verfügung gestellt haben sollten, gelten abweichend von diesen Nutzungsbedingungen die in der dort genannten Lizenz gewährten Nutzungsrechte.

Terms of use:

Documents in EconStor may be saved and copied for your personal and scholarly purposes.

You are not to copy documents for public or commercial purposes, to exhibit the documents publicly, to make them publicly available on the internet, or to distribute or otherwise use the documents in public.

If the documents have been made available under an Open Content Licence (especially Creative Commons Licences), you may exercise further usage rights as specified in the indicated licence.

Department of Economics

Working Paper Series

Survival of the Richest: The Malthusian Mechanism in Pre-Industrial England

Gregory Clark
University of California, Davis

Gillian Hamilton
University of Toronto

April 05, 2006

Paper # 06-15

Fundamental to the Malthusian model of pre-industrial society is the assumption that higher income increased reproductive success. Despite the seemingly inescapable logic of this model, the empirical support for this vital assumption in the preindustrial world is weak. Here we examine the relationship between income and net fertility using a large new cross-sectional data set on reproductive success, social status and income for England between 1585 and 1638. We find that for early seventeenth century England, a society seemingly close to a Malthusian equilibrium, wealth at death robustly predicts reproductive success. The richest male testators left behind double the number of children of the poorest. Consequently in the static English economy of this period social mobility was generally downwards. The strong association in England between wealth and reproductive success seems to also extend back to at least 1250.

UCDAVIS

Department of Economics
One Shields Avenue
Davis, CA 95616
(530)752-0741

http://www.econ.ucdavis.edu/working_search.cfm

Survival of the Richest? The Malthusian Mechanism in Pre-Industrial England

Gregory Clark (UC-Davis) and Gillian Hamilton (Toronto)

gclark@ucdavis.edu, hamiltng@chass.utoronto.ca

Fundamental to the Malthusian model of pre-industrial society is the assumption that higher income increased reproductive success. Despite the seemingly inescapable logic of this model, the empirical support for this vital assumption in the pre-industrial world is weak. Here we examine the relationship between income and net fertility using a large new cross-sectional data set on reproductive success, social status and income for England between 1585 and 1638. We find that for early seventeenth century England, a society seemingly close to a Malthusian equilibrium, wealth at death robustly predicts reproductive success. The richest male testators left behind double the number of children of the poorest. Consequently in the static English economy of this period social mobility was generally downwards. The strong association in England between wealth and reproductive success seems to also extend back to at least 1250.

I. Introduction

An essential component of the Malthusian model of pre-industrial society is that population growth, birth rates minus death rates, increased with income per person.¹ This, combined with that

¹ By the “Malthusian” model we mean here not the specific doctrines espoused by Malthus in any of the editions of his famous treatise, but the general formalism now used by economists to model a society in which incomes are kept at subsistence levels by the interaction of net fertility and a limited land supply. See, for example, Miller and Upton (1986), chapter 1, Galor and Weil (2000), Galor and Moav (2002), Hansen and Prescott (2002), Lucas (2002), Clark (2007).

of diminishing returns to labor as a factor of production, generates the long run Malthusian equilibrium where wages are maintained at a subsistence level.² Figure 1 shows one drawing of how birth rates and death rates might vary with income to satisfy this key property. Once we have this then there is a subsistence income per person y^* which prevails in the long run.

However, empirical tests of this assumption for pre-industrial Europe and Japan have often detected only weak links between either mortality and real incomes, or fertility and real incomes.

The ideal data would be the fertility and mortality of cross sections of the population by income at a given time. But such studies for pre-industrial society are surprisingly few, and the results mixed. Parish register records of baptisms, burials and marriages which are the raw material of demographic enquiry for pre-industrial England have been largely mute on the issue of reproductive success and income or wealth, because of the difficulty of systematically linking family reconstitution records with those on the material and social circumstances of families. The extensive exploration of fertility and mortality by the Cambridge Group through reconstructing the family histories of a sample of 20 or so parishes, thus contents itself with looking at fertility and mortality by parish characteristics – agricultural, manufacturing, trading, mixed - as opposed to at the individual level (Wrigley et al. (1997)). John Landers was able to compare infant mortality rates in eight London parishes in the years 1538-1653 with average incomes in parishes, measured as the percentage of the households in each parish which were ‘substantial’ in the tax listings of 1638. Here there is a clear association between household income and infant mortality rates. Richer parishes had less than half the infant mortality of the poorer ones. Indeed the crude measure of household income used here explains 62% of the variation in infant mortality rates.³ But the famous

² Note that there will be different subsistence levels across different societies. In these modern Malthusian models the subsistence income is by definition the income at which the population is unchanging.

³Landers (1993), pp. 186-8.

study by Hollingsworth on the British peerage suggested that despite their very high incomes of peers before 1700 their life expectancy at birth was lower than for the average person in England. In 1600-49, for example, peers had a life expectancy at birth of 33 compared to 38 for the population as a whole.⁴ Only after the late eighteenth century did aristocrats show a higher life expectancy than the general population.

Zvi Razi finds evidence among the male property owners of medieval Halesowen of greater life expectancy among tenants of more substantial holdings in the period before the onset of the Black Death. Thus cottagers and small holders had a life expectancy of 20.8 years on taking up a holding, while the substantial tenants had a life expectancy of 33.3 years. But in the years 1350 to 1400 after the onset of the Black Death this differential disappeared, with small and large tenants having about the same life expectancy. And the very rich monks of Westminster Abbey in the later middle ages similarly display very low adult life expectancies.⁵

In France more studies have linked family reconstitution studies for individual communities with records of occupation, literacy and wealth. Most recently David Weir found that rich married males in Rosny-Sous-Bois produced more surviving children than the poor, though this was based on the experience of only 47 families. This relationship existed primarily because wealthier men married younger women, and their offspring survived better (Weir (1995)). And Hajime Hadeishi, with a larger sample of 216 families, similarly finds that wealthier families in Nuits had more births per year of marriage. But the size of this effect was small, and the survival rates of children in this study are unknown (Hadeishi (2003)).

There were important variations in long term real wages in the pre-industrial era. Real wages in England, for example, were at extraordinarily high levels in the fifteen century and very low levels in early fourteenth and seventeenth century. Life expectancy at birth does not seem to have been

⁴ Hollingsworth (1965), pp. 54-7, Wrigley et al. (1997), p. 614.

⁵ Razi (1980), Harvey (1995).

any higher in the high wage eras, certainly in the years 1538-1800.⁶ But comparing life expectancy with wages across epochs will only reveal if there was an inverse connection between death rates and wages under some conditions. Specifically the reason for the variation in real wages across epochs has to be changes in the birth rate schedule shown in figure 1, as opposed to changes in mortality rates at a given wage level created by changes in disease or climate.

Real income did vary dramatically from year to year in the pre-industrial world because of harvest failures. Many studies have thus examined the connection between annual grain prices and annual mortality rates. Here we would expect the short run effects of income on fertility and mortality to be more muted than the long run effects, since people have reserves they can draw on in the short run. Patrick Galloway summarized and updated these studies in a systematic fashion. In general the connection between grain price spikes and mortality rates is hard to detect, because of large variation in annual mortality rates caused by epidemic disease. It is largely absent in England after the 1540s. It was also absent in Japan (Tsuyo and Hamano (2001)). There is a consistent association between grain prices and fertility, with higher prices reducing fertility. However the implied upwards slope of births with incomes is very modest. A doubling of prices would on average in these studies lead to less than a 15 percent reduction in fertility (Galloway (1988), p. 303).

Here we test the Malthusian assumption for a large cross section of the population in England circa 1600. The measure we use is the “reproductive success” of males aged 16 and above. We define that as the number of surviving children a man had at the time of his death, counting as surviving children also children who were dead but had themselves left surviving offspring. This measure will correlate highly with the net reproduction rate.⁷ We find that wealth at death (as a

⁶ We can see this by comparing the life expectancies given in Wrigley et al. (1997), p. 614, to real wages in this era from Clark (2005).

⁷ If all underage children were to live to 16, then this number divided by 2 would be the male version of the Net Reproduction Rate.

proxy for income and material living conditions) was powerfully connected with reproductive success. The richest males left twice as many offspring as the poorest.

II. Wills as a Source for Reproductive Success

The source of our information on both reproductive success and economic status is wills. These have been previously employed as an index of population growth only for the years before 1538 when parish registers began to be maintained on a regular basis. Robert Gottfried, for example, used wills as the main evidence for demographic trends in East Anglia in general, and Bury St. Edmunds in particular, in the years before 1538 (Gottfried (1978, 1982)).

Here we use a sample of more than 2,000 wills by male testators in the years 1585 -1638. These dates were chosen because of the existence of a number of printed sources summarizing comprehensive samples of wills in various locations for these years. The wills used are mainly from testators in East Anglia - Cambridge, Essex and Suffolk - but includes a group of wills from London (though for London without the asset information), as well as from two towns outside this region, Bristol and Darlington. Table 1 shows the composition of the sample by location, as well as the types of information available on economic and social status.

Despite the assumed Malthusian nature of the pre-industrial economy, English population in this interval grew at the moderate rate of about 0.56% per year. Thus Wrigley et al. estimate that from 1585 to 1838 the net reproduction rate, the average number of daughters that would be born to a woman if she passed through her lifetime from birth conforming to the age-specific fertility *and* mortality rates of that era, was 1.21 (Wrigley et al. (1997), p. 614). But evidence of population growth is not inconsistent with the assumption that this was still a Malthusian economy close to the Malthusian equilibrium. In such an economy technological advance, or a downward shift in the fertility schedule, could lead to a period of population growth even though there was still the

expected relationship between income and net fertility. We would still expect that those with more economic success enjoyed greater reproductive success.

Wills were also not made by a random sample of the population, but were instead made by those who had property to bequeath.⁸ But the custom of making wills seems to have extended well down the social hierarchy, at least in East Anglia from where most of our wills were drawn. Table 2 shows the major occupations recorded. As the table implies higher income individuals were undoubtedly more likely to make wills, but there are plenty of wills available for those at the bottom of the hierarchy such as laborers, sailors, shepherds, and husbandmen. Indeed we estimate that in Suffolk in the 1620s 39 percent of males who lived past age 16 made a will that was probated.⁹ Thus for these years we are seeing wills from a broad cross section of the population.

These wills were typically made close to the death of the deceased. The maximum time between the writing of the will and the death of the testator can be established by comparing the date of the will with the date probate was granted.¹⁰ 47 percent of the wills were probated within 60 days of their composition, and 77 percent within one year. Thus more than 77 percent of these wills were made within a year of the testator's death, and give a picture of the testator's surviving children and their economic status at the time of their death. Wills known to be probated more than 5 years

⁹ Nesta Evans estimates that perhaps no more than 5 percent of the population at this time left wills (Evans (1987)). But we estimate 39 percent from the following calculation. In Suffolk male wills could be proved in one of four ecclesiastical courts: one of the two archdeaconry courts, the Norwich Consistory Court, or the Prerogative Court of the Archbishop of Canterbury. We know the male will totals per year in the archdeaconry courts (289), and in the Prerogative court (11). So adding a modest 11 for the missing court gives us 311 male wills per year. The population of males in Suffolk in the 1630s is estimated at 130,000: the population in 1801 scaled back to the 1620s by the national population totals. That implied a male population 16 or above of 65,000. We find below that the life expectancy of males making wills at age 16 was 39 years. So the number of male deaths per year in this potentially will making population would be 820. Thus 39 percent of males dying as adults made wills that were probated.

¹⁰ Where a dated codicil was attached to a will, that date was taken as the date of composition of the will.

after their construction were excluded when analyzing the reproductive success of testators. Wills which gave no details on any sort on the assets bequeathed were also excluded.¹¹

The wills employed contain some or all of the following information: the occupation of the testator, the marital status (single, married, widowed, remarried),¹² the number and genders of children, the literacy of the testator,¹³ all monies bequeathed, and to whom, the number of houses bequeathed, whether land was bequeathed (generally the amount of land was indicated in only about 20 percent of wills) and other goods bequeathed that have an ascertainable value (silver spoons, gold rings, horses, cattle, sheep, pigs, grains). Some important information is almost never present, however, such as the age of the testator. We can link a subgroup of 208 testators, however, to parish records of birth dates and/or marriage dates and thus infer their age at death. For this subgroup we show that there is no link between age at death and assets bequeathed, so that wealth is not just a proxy for age.

Below is the summary of a typical will from Suffolk in 1623

JOHN WISEMAN of Thorington, Carpenter (signed with X), 31 January 1623.

To youngest son Thomas Wiseman, £15 paid by executrix when 22. Wife Joan to be executrix, and she to bring up said Thomas well and honestly in good order and education till he be 14, and then she is to bind him as apprentice. To eldest son John Wiseman, £5. To son Robert Wiseman, £5 when 22. To daughter Margery, £2, and to daughter Elizabeth, £2. To son Matthew Wiseman, £0.25. Rest of goods, ready money, bonds, and lease of house where testator dwells and lands belonging to go to wife Joan. Probate, 15 May 1623. (Allen (1989), p. 266.)

¹¹ Wills were of two types. The majority were written wells signed (or marked) by the testator. There were also “nuncupative” wills which were statements of the testamentary wishes of the testator constructed by witnesses after their death. These wills were only included where they were detailed enough to include specific bequests.

¹² Widowed was inferred from specific statements about former wife, or absence of wife in will when children were left bequests.

¹³ Measured by whether the will was signed, the testator bequeathed books other than a bible, or the testator had an occupation requiring literacy such as an attorney or cleric.

Wills of this period, unlike the wills of the fifteenth century investigated by Gottfried, seem to typically mention nearly all surviving children or their descendants.¹⁴ Potentially some children were omitted from wills by being left no bequest. But we show below that the numbers of omitted children must be small. Daughters were much more likely than sons to be excluded from wills: either because they were already married and had received their share of the inheritance in dowry, or because they received no bequest. Where they can be valued bequests to daughters are generally smaller than for sons. For example, John Pratt of Cheveley, Cambridge left each son £5, but each daughter only £2 (Evans (1993), p. 108). Also daughters often received gifts at marriage that were to have been regarded as being their share of the inheritance. John Hynson of Fordham, Cambridge left to his two unmarried daughters Margaret and Mary £30 each. His three married daughters, whose names were not even given, were described thus “To my 3 daughters who are married 10s (£0.5) each” (Evans (1993), p. 217).

Thus daughters were more likely to be omitted than sons. Thus the ratio of boys to girls named in wills can be used as one test of whether many children were being omitted. Also by looking at this ratio by the wealth or social status of testators we can test more importantly whether poor testators were more likely to omit children from their will.

On the overall rate of omissions of children consider table 3, which shows the number of children, and of sons and daughters mentioned in wills by the residence of the testator. The ratio of boys to girls overall would be about 1.05 at birth, 1.03 at ages 1-25, then switching towards a higher ratio of boys in the years 25-45 as women experience higher mortality from childrearing.¹⁵ Thus the expected ratio will be 1.03 or above if boys and girls had equal chances of being mentioned in wills.

¹⁴ The wills investigated by Gottfried for the years 1430-1480 imply that throughout this period even the relatively advantaged group of testators with probated wills suffered catastrophic losses of one third of the population each generation (Gottfried (1978)).

¹⁵ Based on estimated relative male and female mortality rates by age in 1580-1649 (Wrigley et al. (1997) pp. 296, 303).

The actual ratio averages 1.05. Thus at most 2 percent more girls than boys are omitted from wills. But given that girls were so much more likely to be excluded if any children were this implies that the overall omission rate for children was very low. In comparison Gottfried finds for fifteenth century wills that at least 38% of daughters were omitted from the wills.¹⁶

We use the ratio of boys to girls as one test of whether the omission rates varied by time period, social class and the wealth of the testator. For each testator with at least one child we calculated the proportion which was boys (thus ranging from 0 to 1). Then we regressed this on various family characteristics – town location, literacy, estimated assets at death, occupation, and decade of the will – weighting by the number of children in the family. Every variable except one had no connection of any kind with the proportion of boys named: town residents, the literate, and those writing wills in later years all named the same proportion of boys to all children, 0.52. Most importantly for our purposes there was no significant connection, quantitatively or statistically, between the assets of the testator and the fraction of children who were boys. When we look at the strong positive association between assets and children below, there is no evidence that it is a product of girls being omitted from the wills of those with little to leave. When we look at social groups only one of the seven showed any tendency towards more boys, and this was the lowest one laborers. The proportion of boys in the wills of laborers averaged 60 percent, as opposed to 52 percent for the other groups, and despite the small size of this group this difference was big enough to be statistically significant. Since low assets and literacy, both aspects of the laborers as a social group were not associated with fewer girls appearing in wills this result is a little anomalous and is perhaps just the result of chance.¹⁷

It might be still possible that poor families, having little to leave, more often omitted both boys and girls equally, which our gender ratio test will not discover. We can control for this kind of

¹⁶ Gottfried (1978), pp. 190, 198.

¹⁷ These results are available on request.

gender neutral omission by also examining the relationship between wealth and the frequency of either no child being named as an heir, or of no male heir being named. The reasoning is as follows. Even if poorer testators omit some children from their wills because they have few assets, or chose to leave everything to one child, they will certainly not omit all their children for this reason. Further given the preference for males as heirs, while they might leave assets only to the oldest son, they would not omit all their surviving sons from a will. Thus if we take as an index of fertility either just the frequency of at least one child being named, or the frequency of at least one son being mentioned in the will, this should be proof against the type of omission of children possibly to be found in poorer families. We shall see below that when our analysis of fertility is carried out using these as alternative measures the results remain as strong as when using all children.

Since we are interested in the reproductive success of testators, dead children were counted as surviving offspring if they themselves had produced living offspring. Thus William Cooke of Great Livermere in Suffolk, who died at about age 74, left four living children, but also two dead sons who both had two surviving children (Evans (1987), p. 359). He was counted as having 6 children.

As can be seen in table 3 the average numbers of children per testator were modest. For a population to be just reproducing itself the numbers of children surviving each male at time of death would have to exceed two. It has to exceed two since some of these children are minors who would die before they would reach the age (sixteen or more) where they would be potentially writing wills. We describe below how we link a subsample of the testators to parish records. This enables us to estimate the age distribution of the surviving children, for 379 children. 33 percent of these surviving children were below age 16. Applying the mortality estimates for the general population derived by Wrigley et al. to this age distribution we estimate that for the average testator to get 2

children who survived to age 16 at least they would need to leave 2.07 children when they died.¹⁸

Thus London testators circa 1620 were definitely not reproducing themselves. Those outside London in smaller towns, with 2.43 surviving children per testator, were experiencing a population growth of less than 20 percent per generation. Country testators, however, were growing by 40 percent per generation.

III Estimating Economic Status

From the information in the wills we can estimate the economic status of the testator in two ways. The first is from the occupation ascribed to the testator. The second from estimating the value of assets bequeathed. To simplify the occupation structure somewhat we organized male testators in both England into the seven social categories shown in table 4. As can be seen these categories as a whole correlate well in England with two other measures of social status, literacy and assets bequeathed (derived below). Thus these occupations alone explain 18 percent of the variation in income. But within each social group there are wide variations in the economic position of the testator. There were laborers as rich as the average craftsman or trader, and craftsmen as rich as the average merchant, cleric or attorney. Many husbandmen were richer than the average yeoman. Similarly some laborers were literate, and many yeomen illiterate. So the social labels given in the wills are loose.

The estimated assets of testators were constructed from the information in wills by adding together the cash payments directed by the testator, with the estimated value of houses, land, animals, grain bequeathed by the testator. While land was bequeathed in 975 of the wills in our sample, in only 209 cases, one in five, was the area of the land indicated. To infer the area in the other 766 cases we estimated for the observed cases area as a function of other features of the will:

¹⁸ The survival rates used were from Wrigley et al. (1997), p. 215.

the number of houses bequeathed, the number of additional parishes the land was described as lying in, the total amount of cash and goods bequeathed, an indicator for the literacy of the testator, an indicator for whether the testator lived in a town, an indicator of whether the person engaged in farming, and indicators for each occupational group. The functional form that best fitted the observed cases was chosen by experiment. Thus the estimated expression was

$$\log(AREA) = a + b_1HOUSE1 + b_2HOUSE2 + b_3HOUSE3 + b_4MOREPAR + b_5BEQROOT + b_6DLIT + b_7DLITUNKNOWN + b_8DTOWN + b_9FARMER + \sum_i c_i OCCUP_i + e$$

where HOUSE1 was an indicator set to 1 if one house was bequeathed, HOUSE2 an indicator for two houses, HOUSE3 an indicator for three or more houses, MOREPAR an indicator for land left in more than one parish, BEQROOT the square root of the value of cash and stock bequeathed, DLIT an indicator for a literate testator, DLITUNKNOWN an indicator for someone whose literacy is unknown, DTOWN an indicator for a town dweller, DFARMER an indicator for someone engaged in farming, and OCCUP_i indicators for the 6 occupational groups defined above other than laborers. DFARMER was set to 1 if the testator left farm animals or grain in the will, or left farm implements. To normalize for changes in the price level over the years 1585 -1836 the “BEQROOT” variable in the above equation was constructed using the actual cash bequests in the will normalized by the average price level in each of the decades 1580-9, 1590-9, 1600-9, 1610-9, 1620-9 and 1630-9. To this was added the value of the stock left calculated using a standard set of values normalized to the 1630s: horses £5, cattle £4, sheep £0.5, pigs £2, wheat (bu.) £0.21, barley/malt (bu.) £0.10, oats (bu.) £0.07, peas/beans (bu.) £0.12, silver spoons £0.375, gold rings £1.

Table 4 shows the estimated coefficients and their statistical significance. Most of the statistically significant associations are in the direction we would expect. People leaving more houses and cash leave more land, as do literate people, people engaged in farming, and people of

higher occupational status such as gentry, farmers, and merchants. The R^2 is 0.512, which means that we explain more than half of all the variation in reported land areas with the reported characteristics. The areas of land actually observed ranged from 0.25 to 235 acres. The areas imputed ranged from 0.9 to 653 acres. The imputation of areas will thus be extremely noisy for cases where the area imputed is greater than 200 acres. But since any imputation of area of above 100 acres puts the person in our top income class we think this is not a major problem.

We then constructed a monetary measure of the wealth bequeathed by the testator at the time of death by adding to the value of the money and stock bequeathed an estimated value for houses (£40 each) and for land (£10 per acre).¹⁹ That is

$$BEQUEST = CASH + VALUE\ OF\ STOCK + HOUSES \times 40 + LAND \times 10$$

For male testators where we have enough information to estimate assets bequeathed the average value of assets equaled £235 in 1630s prices (1.1 houses (£44), 9.9 acres of land (£99), £88 in cash bequests (in the prices of 1630-9) and £4 in stock). But the median value was only £99.8. This would generate an annual income of about £6 at the return on capital typical of this period. The yearly earnings of a carpenter in this period would be about £18, and of a laborer £12.²⁰

One problem with the above method of estimating the total bequest is that often the cash payments to children were to be paid by those who got the real assets, so rather than being in addition to the real assets they were a charge on them. But instead of trying to distinguish cases where the cash was an addition to real assets listed, rather than just a charge on these assets, we took the view that a true index of the wealth of the testator was likely to be more accurately revealed by

¹⁹ The house values are from Clark (2002a), and the land values from Clark (2002b). We are aware that houses in country parishes were worth less than those in towns, but felt that not too much distortion was introduced by simply having a common value for all housing.

²⁰ See Clark (1998) for the rates of return. Clark (2005) gives the wage rates.

the sum of these four components. Where more cash is charged against real assets the greater are these real assets likely to be.

IV Economic Status and Reproductive Success

Were the numbers of surviving children linked to the likely income of the person in these years? We sorted males with information on bequests into eight asset classes: £0-9, £10-24, £25-49, £50-99, £100-199, £200-499, £500-999, £1000-. The class sizes were chosen in part to distribute the testators approximately equally between the classes.²¹ Thus the bottom four income groups cover the bottom 50 percent of the population, the top four the other 50 percent. We did this so that the estimation of the effect of wealth on net fertility would be free to take any form as wealth levels changed. We also estimated the effect in a parametric way using the square root of assets as the independent variable, and the association of assets and reproductive success was still very strong.

Table 6 shows the estimated association between assets and surviving children for all testators, and restricted to testators married at least once. Controls are included for town residence, and for the testators whose will revealed that they actually engaged in farming (by leaving grain, farm animals, or farm implements to their children). The estimate is done with a negative binomial regression because the number of children per testator is a count variable, but with over dispersion compared to the Poisson distribution.²² The estimated coefficients in table 6 thus need to be exponentiated to give the estimated numbers of children per testator in each asset class.

Figure 6 shows the estimated numbers of children per male of each bequest class for England as a whole outside London as revealed by the wills. For all married men someone with less than £10 in bequests would typically have fewer than two children, while someone with £1000 or more, nearly

²¹ The shares in each class were .16, .08, .11, .15, .18, .19, .09, .04 respectively.

²² See Cameron and Trivedi, 1998, p. 70.

four children. As table 6 and figure 6 shows the link between assets and surviving children is extremely strong both statistically and quantitatively. If we instead estimate the link parametrically using the square root of assets as the independent variable, because the link between assets and reproductive success is non-linear, we get a similar quantitatively and statistically strong coefficient on the square root of assets.²³ Given that we have a very noisy measure of assets bequeathed, the true relationship between assets and children is most likely even stronger than shown in the figure.

The link shown here between assets and surviving children cannot be an artifact created by poorer testators omitting some children because they had nothing to bequeath them. This is evident in a number of ways. First we know from the work of Wrigley and his associates that the typical male testator in England in these years would leave 2.58 surviving children (Wrigley et al (1997), p. 614). So testators with assets with four children per family must be producing substantially more surviving children than the general population, and by inference than the poorest testators also.

But we can also see from the evidence of the wills themselves that omission of children by poorer testators cannot explain the result. The fourth column of table 6 shows the results for estimating (using probit) the likelihood that a testator left at least one son as a function of assets. There is again a strong link quantitatively and statistically. Only 54 percent of the poorest testators would leave a son, as compared to 74 percent of the richest. Figure 3 shows the percent of testators with a son at each income class. Testators who omitted some children because of insufficiency of assets for bequests would not omit all their sons. Thus if the family size was really the same across rich and poor, the frequency of one son at least appearing in the will should be the same. Clearly it is not. Indeed for the actual distribution of sons across the 619 testators in the top three classes, we can calculate what would happen to the likelihood that a testator had no son if we just randomly

²³ We cannot use the more flexible measure of the log of assets as the independent variable because some testators have bequests with 0 estimated value (such as clothing, kitchen utensils, work tools).

removed half of these sons. The answer is that it drops from an observed 74 percent with a son to 56 percent, close to what we observe for the poorest testators. Thus the data here supports the idea that the problem is not one that “excess” sons and daughters were not reported by poorer testators.

The last column of table 6 reports a similar exercise where we estimated the likelihood that the testator left any heir. Again if fertility was constant across asset classes, but some children were omitted from the wills of poorer people, this frequency should also be constant across assets classes. Clearly it is not, and again the observed frequency of no heir at the lowest asset level can be predicted closely from the distribution of family sizes at the upper asset classes, just randomly deleting half the children. So the powerful link between assets and numbers of surviving children has nothing to do with some children being omitted from the wills of the poorer testators. We shall also see below that it has nothing to do with assets proxying for age either.

Assets predict reproductive success much better than our alternative measures of income which are occupation and literacy. Table 7 shows the estimated coefficients of a negative binomial regression of the numbers of children on literacy and occupational status, controlling again for residence and farming activity by testators. This sample includes also testators in London, so there is a control included also for London residence. The higher social classes do appear to produce more surviving children, but the effect is much weaker than for assets, both statistically and quantitatively. Figure 4 shows the numbers of surviving children by these broad occupational classes, controlling just for residency, as inferred from the negative binomial regression. Testators from the top three social groups produce on average 3 surviving children compared to 2.2 for laborers. But those described as “gentleman” or “esquire” are not particularly successful in reproduction, perhaps because in this case the term was used for younger people from the upper classes before they acquired an occupation (which would account for the greater proportion of gentry unmarried).

If we run a regression with both assets, literacy and occupation, both literacy and occupation become both quantitatively and statistically insignificant predictors of net fertility. It seems that only because occupation and literacy are indicators of assets do they on their own also explain reproductive success. Economic status rather than social class is what matters for reproductive success in England in these years. Presumably this is because the occupational labels used to form people into status classes are imprecise. There are husbandmen who are literate and wealthier than yeomen who are illiterate. There are carpenters who work for others and own no assets, and there are carpenters who are employers and engage in building and leasing property.

V Age, Assets and Surviving Children

The strong positive association of bequeathed assets with numbers of surviving children might be explained by assets proxying for the age of the testator, if assets were steadily accumulated over the course of men's lives. But we can rule out this possibility using a subgroup of testators in our sample: those whose ages we can establish. We were able to get an estimate of age at time of making the will for 250 of the testators. We did this from one of four sources of information. First from the age being given in the will (2), second from a parish register baptism record (109), third from a parish register marriage record (95), and last is from a parish record baptism record for their oldest known child (54). We infer age from the date of the first marriage using the average age at the first marriage of the 58 testators where we know both baptism and marriage dates. The average age of first marriage for testators was 27.55 years. We infer age from the birth of the first child using the information supplied by 69 cases where we have the marriage date and the date of birth of the oldest known child.²⁴ The average time between marriage and the birth of the first known child

²⁴ In most cases this information came from the will, but we also searched for the baptism records of any children with the first names of the parents or grandparents if these were not mentioned in the will.

was 1.91 years. So in the 54 cases where only the date of birth of the oldest child was known we thus assumed that the testator was born 29.46 years before.²⁵

The data on this sub-sample whose details can be located in parish registers can be used as a test of how representative our testators are of the general population in these years. Table 8 shows various characteristics of the life experience of our testators with the general population at this time as calculated by Wrigley and his associates. The average age at first marriage and average life expectancy by age 25 are very similar to those of the general population. The length of time between marriage and the christening of the first child is a bit longer than the 1.91 years Wrigley et al. would suggest. But in our case the matching method used misses some earlier born children who died before the will, but either did not appear in the parish baptism register, or were not located because they had a first name other than that of the surviving children or of the parents or grandparents.²⁶

When we compare the ages of this subgroup of testators with their estimated assets at time of death we find the pattern shown in figure 5. Though the ages of the 250 testators varied from 16 to 88, there is little connection between age at making the will and the value of the assets bequeathed. Thus when we regress assets (ASSETS) on age (AGE) there is no significant upwards trend with age, and the fit is extremely weak.

$$\text{ASSETS} = 163.0 + 2.06 \times \text{AGE}$$

(1.71)

$$R^2 = 0.006$$

²⁵ To locate these testators in any reasonable length of time we had to use a secondary source, transcriptions of birth and marriage information from parish registers in the International Genealogical Index maintained by the Church of Jesus Christ of the Latter Day Saints. This site had a number of inaccuracies. Events in the early months of the calendar year, for example, were often incorrectly ascribed to the previous year, because the transcriber did not realize that the ecclesiastical year did not coincide with the calendar year.

²⁶ In other cases we found the date of such earlier births by looking for an earlier child with the same first names as the testator or his then wife, since first children tended to be named after the parents.

with the standard error in parenthesis. Age explains less than 1 percent of the variation in assets, so that if assets are highly correlated with fertility, it cannot be through assets proxying for age.

Even if we allow for an inverse U shape in assets, as would be predicted by economic theory on the assumption that part of asset holding is to provide income by dissaving in old age, we still find a very poor fit. Regressing now assets on age and age squared (AGE2) we get

$$\begin{aligned} \text{ASSETS} = & 57.9 & + & 6.44 \times \text{AGE} & - & 0.042 \times \text{AGE}^2 \\ & & & (10.5) & & (0.099) \end{aligned}$$

$R^2 = 0.007$

This is shown in the figure as the solid line. The coefficients on AGE and AGE2 are very imprecisely estimated, so that the exact shape of the relationship is unknown. The extremely low R^2 shows that only 1 percent of the observed variation in assets can be explained by life cycle accumulation behavior.

These results are completely consistent with other studies of wealth by age in the pre-industrial era and the nineteenth century. David Weir, in a study of 47 households in Rosny-Sous-Bois in 1747, also finds that age explains a tiny fraction of the variation in assets or incomes (Weir (1995), p. 11). Peter Lindert using a much larger sample of those whose wills were probated in England in 1875 does find that age is significantly correlated with probate wealth, but explains on its own only 2% of probate wealth variation. Occupation, in contrast, explains about 19% of the variation (Lindert (1985)).

For the 200 testators where we have the size of the bequest and the number of children we estimated the effect of assets on the numbers of children controlling for the age of the testator. To do this we included indicator variables for testators being aged 0-29, 30-39, 40-49, and 50 and above at the time of writing the will. The age variables were important quantitatively and statistically in

explaining the numbers of children. But, as would be expected from the discussion above, controlling for age did not eliminate, or even much reduce, the underlying relationship between assets and numbers of surviving children. Figure 6 shows the relationship between assets and children for this reduced sample both uncontrolled and controlling for the age of the testator. The small sample of 242 testators, and the large range of numbers of surviving children, from 0 to 13 children, means that the relationship between assets and surviving children is not as smooth as for the larger sample. But it is still clearly there.

VI. Why Did Richer Men Leave More Descendants?

Richer married men could have left more children for any of a number of reasons. They may have married earlier, and so have survived longer to have children. They may have married younger wives. They may have been more likely to remarry if their wife died. They may have had more births per year of marriage, or these children might have survived better. The information from the wills, and from the group that can be linked to parish registers, allows us to narrow down these possibilities to only two. Either richer testators produce more children per year of marriage, or the children they produced survived better.

(1) For the 81 cases in the subsample where we have both the birth date and at least an estimate of the marriage date there is no sign that the richer half of the testators married any earlier. The estimated age at marriage was 27.2 for the poorer group and slightly higher at 27.4 for the richer. The 95% confidence interval for the difference in marriage age between richer and poorer is -2.2 years to +2.6 years. Earlier marriage is thus unlikely to explain any of the advantage in not fertility for the richer testators.

(2) Based on 218 cases the number of years married averaged 27.5 for the poorer and 29.2 for richer testators (with the 95% confidence interval on the difference being -2.1 years to +5.5

years). Thus again life expectancy differences were likely to be small between rich and poor, though the great variance of age at death makes this hard to estimate without a very large sample.

(3) Probabilities of ever marrying were possibly slightly higher for richer men. For 8.8% of poorer testators there was no evidence of any marriage, while this was true for only 6.1% of richer testators. But this difference was not significant statistically or quantitatively.

(4) Thus the greater reproductive success of richer men lay predominantly in the fact that they produced more surviving offspring per year of marriage, measuring that to the year of first marriage. Thus controlling for the length of time since the first marriage the richer half of the sub-sample produced an estimated 30 percent more surviving children per year.

That could come from some or all of three different sources: the richer may have married younger brides, they may have remarried at higher rates if their first wife died, or their children may have survived infancy and childhood better. We suspect, consistent with the evidence presented above on infant mortality across London parishes of different average wealth, that differential survival of children was the key. Thus for our sub-sample 9 percent of rich testators had been married more than once, compared to 6 percent for poorer testators, though the difference is not statistically significant.²⁷ But even this difference would explain little of the fertility differences between rich and poor.

VII The Social Consequences of Survival of the Richest

England in the years 1585-1638 was still a relatively static society, with little change in income per person. It was, as noted, a society still in the Malthusian grip where economic change was slow or non-existent. Consequently the relative numbers of occupations, the wage rates for

²⁷ Unfortunately we cannot use the full sample to test whether remarriage was more prevalent among richer men, since the wills are poor at revealing earlier wives where remarriage took place, and they are also poor at revealing the existence of any wife if the testator dies as a widower without children.

different occupations, and the stock of housing per person changed little. Land per person fell, but land values were increasing with the growth of population, so the value of land per person also changed little. The great reproductive success of richer testators thus meant that their children had to be on average moving down the social ladder in terms of assets and occupations, and moving down reasonably rapidly.

We illustrate this in table 9 for Suffolk in the 1620s and 1630s. The second column of the table shows the sample of male will makers from Suffolk arranged by asset class. Added to the observed wills are the appropriately sized group of males who made no will, assumed to have 0 assets, as well an appropriately sized group of testators whose wills were approved in higher courts, and whose assets are assumed to all exceed £1000. The next column shows the share of each class of males in the population in the first generation. The next column gives the observed numbers of male children from each asset class in Suffolk, reduced by 3 percent to allow for childhood mortality. This is the number of males who reach at least age 16 from each asset class. We assume the non-will makers had the same numbers of children as those making wills whose assets were £0-9. For those whose wills were proved in higher courts we assume they had the same numbers of children as those of the highest observed asset class. This implies that of a population of 3,613 males in the first generation we end up with 4,266 adult male successors in the next generation, an increase of 18 percent per generation. This is very close to the gain of 21 percent per generation implied by Wrigley et al's. aggregate estimates for England in this period.

The last column of the table shows the shares of the children of each asset class in the next generation. Testators with less than £10 in assets and those who left no will were 65 percent of the first generation. But their sons constituted only 53 percent of the next generation. Testators with more than £500 in assets were 7.9 percent of the initial generation. Their sons were 13.1 percent of the next generation. Given that assets per person in the population probably stayed constant over

this interval, there thus must have been considerable net downward mobility in the population.

Nearly half of the sons of higher class testators would end up in a lower asset class at death. Indeed net mobility would be downward for testators in all the groups with £25 or more in assets.

VII Other Times, Other Places

There are few published studies of the link between income and net fertility in the pre-industrial era. There is, however, evidence that the pattern uncovered here of much higher net fertility by richer groups existed in England at least by 1250. The King had a financial interest in the deaths of his tenants in chief, those who held land directly from him in the feudal system. These individuals were mostly an economically privileged group, and included the highest nobility of the land. There were customary payments to the crown upon a succession, if the heir was under age it created a profitable guardianship for the crown, and if the heir was an unmarried female the marriage of the heiress might be in the hands of the king. Thus from 1250 on the king's officials conducted *Inquisitiones Post Mortem* on the deaths of these tenants, which are preserved in the Public Record Office. These inquisitions record only the following information, however, about surviving children: the oldest surviving son (or his descendants), failing a male heir all daughters (or their descendants), and failing any surviving child (or their descendants) the next of kin.

Josiah Cox Russell in a famous, and very ingenious, study that in part inspired this paper used the information from the inquisitions from 1250 to 1500 to estimate the number of surviving offspring by quinquennia, and thus trends in English medieval population (Russell (1948)). However, Russell's method depended on all the names of all daughters being reported when there were no male heirs, and the *IPM* data shows that could not have been the case. Too few girls are

reported in these cases to fit with the proportion of times a male heir exists.²⁸ There is no reason, however, to suspect the accuracy of the data that report how often a male heir exists, or how often no child of the deceased exists. But without information on the likely distribution of family sizes provided by accurate counts of the numbers of daughters where there were only daughters, it is not possible to infer from these measures average numbers of surviving children per testator.

However, the evidence of the wills in 1585-1638 provides an alternative way to infer total numbers of surviving children from measures such as the fraction of times there was an heir, or the fraction of times there was a male heir, for wealthy groups such as royal tenants before 1500. Figure 7 shows two series by decade. The first is the average number of males per adult inferred for the whole population of England from data on the aggregate movement of population. As can be seen, except for the phase of population growth up to 1315, this number was one or below one. The second is the implied average number of adult male children produced by royal tenants. This was calculated by using the proportions revealed for 1585-1638 between total male surviving children and the fraction of testators leaving a son or leaving some child.

In the two periods in medieval England where the population was stable or growing, 1250-1349, and 1450-1500 tenants in chief were producing on average about 1.8 surviving sons, nearly double the population average. Even in the years of population decline from 1350 to 1450, though implied surviving sons per tenant in chief declined, it remained at above the replacement rate of in most decades. The gap between the net fertility of this rich group and the general population did, however, decline in these 100 years. Thus, as later, in medieval England the rich seem to have been out reproducing the poor, and again social mobility must have been generally in a downwards direction.

²⁸ Russell, aware of this problem of too few women being reported, concludes improbably that "such a condition would probably have been the result of a systematic elimination of females at birth." (Russell, 1948, p. 238).

Zvi Razi's evidence from the court rolls of Halesowen 1270-1430 is consistent with the suggestion of the *Inquisitiones Post-Mortem* that the rich were much more successful in reproducing themselves in medieval England. Table 10 shows what happened by 1348 to the heirs of the 174 families holding land in servile tenure identified in the court rolls from 1270-1282. All of the richest families, those holding the largest amount of such land, had a descendant who was holding land of the manor in 1348, two and a half generations later. The bulk of the middling families had this also. But only 25 of the 70 families holding the smallest amounts of land had a descendant holding land. However the distribution of holding sizes had not become more unequal because though families with larger holdings in 1270-82 on net acquired land, they also often divided up their holdings between multiple heirs, keeping the size distribution in balance. Since Ravi's data does not allow us to know whether the small landholders were in fact suffering demographic collapse, or simply either disappeared from the court rolls, or leaving the manor, the data does not demonstrate that medieval England was experiencing the same population dynamics as later.²⁹ But it is consistent with that interpretation.

This story of the reproductive advantage of the rich is also found in a collection of surveys of communicants in villages in Austria and southern Germany for the seventeenth to nineteenth centuries assembled by Joerg Baten. Villagers of higher social status, and those revealed to be more likely literate had at the time of the surveys more surviving children.³⁰

However, the reproductive advantage of the rich is not found in all pre-industrial societies. In a companion study to this one we have also looked at the reproductive success of French Canadians in the seventeenth and eighteenth centuries (Hamilton and Clark (2006)). Here our sources limit us to married men, but the result is very clearly that reproductive success lay with the

²⁹ Inhabitants without land were less likely to appear in court rolls since they do not show up in land transactions or as pledges.

³⁰ Joerg Baten, personal communication.

men of lower social status and lower levels of literacy. Thus Quebec in contrast to England was a society of net upward social mobility.

References

- Allen, Marion E. Wills of the Archdeaconry of Suffolk, 1620-24. Woodbridge, Suffolk: Boydell Press for the Suffolk Records Society, Volume 31, 1989.
- Atkinson, J. A. Darlington Wills and Inventories, 1600-1625. Newcastle-upon-Tyne: Publications of the Surtees Society, v. 201, Atheneum Press, 1993.
- Cameron, A. Colin and Pravin K. Trivedi. Regression Analysis of Count Data. Cambridge: Cambridge University Press, 1998.
- Clark, Gregory. "Land Hunger: Land as a Commodity and as a Status Good in England, 1500-1910," Explorations in Economic History, 35(1) (Jan., 1998): 59-82.
- Clark, Gregory. "Farmland Rental Values and Agrarian History: England, 1500-1912" European Review of Economic History, 6(3) (December 2002): 281-309.
- Clark, Gregory. "Shelter from the Storm: Housing and the Industrial Revolution, 1550-1912" Journal of Economic History, 62(2) (June 2002).
- Clark, Gregory. "The Condition of the Working-Class in England, 1209-2004" Journal of Political Economy, 113(6) (December, 2005): 1307-1340.
- Clark, Gregory. "The Long March of History: Farm Wages, Population and Economic Growth: England 1209-1869." Forthcoming, Economic History Review, 2006.
- Clark, Gregory. The Conquest of Nature: A Brief Economic History of the World. Forthcoming, Princeton University Press, 2007.
- Emmison, F. G. Essex Wills. Vols. 10-12. Chelmsford: Essex Record Office, 1995, 1998, 2000.

- Evans, Nesta. The Wills of the Archdeaconry of Sudbury, 1630-35. Suffolk Records Society, Vol. 29. Woodbridge, Suffolk: The Boydell Press, 1987.
- Evans, Nesta. The Wills of the Archdeaconry of Sudbury, 1636-38. Suffolk Records Society, Vol. 35. Woodbridge, Suffolk: The Boydell Press, 1993.
- Galloway, Patrick R. "Basic Patterns in Annual Variations in Fertility, Nuptuality, Mortality, and Prices in Pre-Industrial Europe." Population Studies, 42(2), (July 1988): 275-302.
- Galor, Oded and David N. Weil. "Population, Technology and Growth: From Malthusian Stagnation to the Demographic Transition and Beyond." American Economic Review 90 (2000): 806-828.
- Galor, Oded and Omer Moav. "Natural Selection and the Origin of Economic Growth." Quarterly Journal of Economics, 117 (2002): 1133-92.
- Gottfried, Robert S. Epidemic Disease in Fifteenth Century England. New Brunswick, NJ: Rutgers University Press, 1978.
- Gottfried, Robert S. Bury St. Edmunds and the Urban Crisis, 1290-1539. Princeton: Princeton University Press, 1982.
- Hadeishi, Hajime. "Economic Well-Being and Fertility in France: Nuits, 1744-1792." Journal of Economic History, 63(2): 489-505.
- Hamilton, Gillian and Clark, Gregory. "Economic Status and Reproductive Success in New France" 2006.
- Hansen, G. and Prescott, Edward C. "Malthus to Solow" American Economic Review. 2002.
- Harvey, Barbara. Living and Dying in England, 1100-1540 : the Monastic Experience. Oxford: Oxford University Press, 1995.
- Hollingsworth, Thomas H. The Demography of the British Peerage. London: Population Investigation Committee, LSE, 1965.

- Landers, John. Death and the Metropolis: Studies in the Demographic History of London, 1670-1830. Cambridge: Cambridge University Press, 1993.
- Lang, Sheila and Margaret McGregor. Tudor Wills Proved in Bristol, 1546-1603. Bristol: Bristol Record Society, 1993.
- Lea, J. Henry. Abstracts of wills in the Prerogative court of Canterbury at Somerset house, London, England. Boston, Mass., New-England historic genealogical Society, 1904.
- Lindert, Peter. "Lucrens Angliae: The Distribution of English Private Wealth since 1670," Working Paper #18, Agricultural History Center, UC-Davis, 1985.
- Lucas, Robert E. "The Industrial Revolution: Past and Future." In Robert E. Lucas, Lectures on Economic Growth. Cambridge: Harvard University Press, 2002.
- Malthus, Thomas Robert. An Essay on the Principle of Population. New York; London; W. W. Norton & Company, 1976.
- Malthus, Thomas Robert. An Essay on the Principle of Population. 6th Edition. London: John Murray, 1826.
- Miller, Merton H. and Charles W. Upton. Macroeconomics: A Neoclassical Introduction. Chicago: University of Chicago Press, 1986.
- Razi, Zvi. Life, Marriage and Death in a Medieval Parish: Economy, Society and Demography in Halesowen, 1270-1400. Cambridge: Cambridge University Press, 1980.
- Razi, Zvi. "Family, Land and the Village Community in Later Medieval England." Past and Present, 93 (Nov. 1981), pp. 3-36.
- Russell, Josiah Cox. 1948. British Medieval Population. Albuquerque, New Mexico: University of New Mexico Press.

- Tsuya, Noriko O. and Kiyoshi Hamano. "Mortality responses to rice price fluctuations and household factors in a farming village in central Tokugawa Japan," History of the Family, 6 (2001): 1-31.
- Weir, David. "Life under pressure: France and England, 1670-1870." Journal of Economic History, 44(1) (1984): 27-47.
- Weir, David. "Family Income, Mortality, and Fertility on the Eve of the Demographic Transition: A Case Study of Rosny-Sous-Bois." Journal of Economic History, 55(1) (1995): 1-26.
- Wrigley, E.A. and R.S. Schofield. The Population History of England 1541-1871: A Reconstruction. Cambridge Studies in Population, Economy, and Society in Past Time. Cambridge: Cambridge University Press, 1989.
- Wrigley, E.A., R.S. Davies, J.E. Oeppen, and R.S. Schofield. English Population History from Family Reconstitution, 1580-1837. Cambridge Studies in Population, Economy, and Society in Past Time, 32. Cambridge: Cambridge University Press, 1997.

Table 1: Location of the Testators in the Data Set

Location	Number of Wills	Wills with bequest information	Wills with Occupation information	Wills with literacy
Bristol	82	76	71	18
Cambridge (county)	73	72	55	72
Durham (county)	36	36	31	20
Essex	577	573	476	17
London	177	0	155	160
Suffolk	1,251	1,280	1,020	1,184
Other	52	6	43	30
All	2,250	1,934	1,851	1,511

Sources: Allen (1989), Atkinson (1993), Emmison (1995, 1998, 2000), Evans (1987, 1993), Lang and McCregor (1993), Lea (1904).

Table 2: The Major Occupations of Will Makers

Occupation	All	London	Towns	Countryside
Yeoman, Farmer	681	7	31	643
Husbandman	304	0	6	298
“Gentleman”, etc.	107	37	24	46
Laborer	81	0	3	78
Building Craftsman	62	1	10	51
Weaver	45	0	3	42
Tailor	40	4	6	30
Mariner, Sailor, Fisherman	34	5	5	24
Shoemaker	34	3	14	17
Clothier	32	0	9	23
Blacksmith	28	2	3	23
Merchant	28	5	15	8
Shepherd	18	0	0	18
Cook, Baker	17	3	4	10
Tanner	16	0	10	6
Miller	16	0	1	15
Clerk, cleric	15	2	3	10
Attorney, Barrister	14	10	4	0
Clothworker	13	4	5	4
Haberdasher	13	9	2	2
Cooper, Hooper	13	0	4	9
Merchant Tailor	13	12	1	0
Grocer	12	5	3	4
Butcher	12	0	3	9
Glover	11	0	1	10
All	1,851	155	229	1,467

Table 3: Surviving Children per Male Testator, England, 1585-1638

Residence	Number of wills with information on children	Children per testator	Sons per testator	Daughters per testator	Ratio Sons/ Daughters
London	177	1.96	0.83	1.08	0.77
Town	267	2.43	1.22	1.18	1.04
Rural	1,806	2.92	1.51	1.40	1.08
ALL	2,250	2.79	1.42	1.35	1.05

Note: The numbers of sons and daughters in each row do not always add up to the total numbers of children since in a few cases the total number of children is known, but not the number of sons or daughters. Locations counted as towns were Bristol, Bury St Edmunds, Chelmsford, Colchester, Darlington, and Ipswich.

Sources: Allen (1989), Atkinson (1993), Emmison (1989, 1990, 1991, 1995, 1998, 2000), Evans (1987, 1993), Lang and McGregor (1993), Lea (1904).

Table 4: Estimating Missing Land Areas

Variable	Coefficient Value	Standard Error
Intercept	-0.508	0.416
One house	0.368	0.206
Two houses	0.818**	0.235
More than two houses	1.042**	0.261
More than one parish	0.541*	0.231
Square root of other bequests	0.0465**	0.0137
Literacy Unknown	0.290	0.195
Literate	0.496**	0.164
Town Dweller	-0.752	0.437
Engaged in Farming	0.181	0.170
Gentry	2.620**	0.630
Merchants/Professionals	1.248*	0.483
Farmers	1.895**	0.390
Traders	0.993	0.562
Craftsmen	0.730	0.437
Husbandmen	1.148**	0.403
Unknown	1.416**	0.407

Note: *Statistically significant at the 5% level, **statistically significant at the 1% level.

Table 5: Characteristics of the Social Categories, England

Social Group	Numbers of wills giving asset information	Fraction of testators literate	Average value of assets bequeathed (£)	Minimum estimated value of assets bequeathed (£)	Maximum value of assets bequeathed (£)
Gentry	59	0.94	1,084	0	10,935
Merchants/Professionals	87	0.84	268	0	1,739
Farmers	659	0.50	406	0	7,946
Unknown	345	0.44	154	0	1,360
Traders	84	0.47	112	0	1,390
Craftsmen	267	0.40	85	0	525
Husbandmen	333	0.24	87	0	1,898
Laborers	100	0.14	42	0	210

Table 6: Assets and Reproductive Success

Independent Variable	Children, all testators	Children, all married	Some male heir, all testators	Some heir, all testators
Regression Type	Negative Binomial	Negative Binomial	Probit	Probit
Bequests, £10-24	0.031 (0.093)	0.073 (0.085)	-0.006 (0.125)	-0.003 (0.130)
Bequests, £25-49	0.334** (0.082)	0.285** (0.073)	0.236* (0.115)	0.371** (0.124)
Bequests, £50-99	0.358** (.076)	0.307** (0.068)	0.324** (0.107)	0.353** (0.113)
Bequests, £100-199	0.451** (.073)	0.379** (0.065)	0.449** (0.105)	0.469** (0.112)
Bequests, £200-499	0.580** (.072)	0.513** (0.064)	0.508** (0.105)	0.638** (0.115)
Bequests, £500-999	0.673** (0.086)	0.574** (0.075)	0.526** (0.124)	0.526** (0.146)
Bequests, £1000-	0.737** (0.102)	0.681** (0.088)	0.549** (0.166)	0.531** (0.181)
Town	-0.213** (0.067)	-0.183** (0.060)	-0.231* (0.095)	-0.237* (0.100)
Farm Occupation	0.117** (0.046)	0.075 (0.039)	0.189** (0.074)	0.339** (0.085)
Constant	0.644 (0.059)	0.807 (0.054)	0.098 (0.080)	0.401 (0.083)
N	1,933	1,735	1,933	1,933
Pseudo R ²	0.018	0.019	0.026	0.039

Note: In each case the constant refers to the average number of surviving children for an illiterate testator in a rural parish with fewer than £10 in bequests. * = statistically significant at the 5% level, ** = statistically significant at the 1% level.

Table 7: Literacy, Social Status and Reproductive Success

Independent Variable	Children – all testators	Children – all testators	Children - married testators	Children - married testators
Literate	0.057 (0.051)	-	0.087* (0.044)	-
Husbandmen	0.206 (0.107)	0.216* (0.106)	0.166 (0.093)	0.179 (0.093)
Craftsmen	0.231* (0.110)	0.259* (0.109)	0.173 (0.096)	0.208* (0.095)
Traders	0.162 (0.137)	0.187 (0.137)	0.085 (0.119)	0.116 (0.119)
Unknown	0.040 (0.107)	0.063 (0.106)	0.152 (0.094)	0.181 (0.093)
Farmers	0.347** (0.102)	0.383** (0.100)	0.297** (0.089)	0.344** (0.088)
Merchants / Prof	0.259* (0.129)	0.316* (0.125)	0.195 (0.113)	0.272* (0.110)
Gentry	0.163 (0.142)	0.218 (0.139)	0.231 (0.126)	0.309* (0.123)
London	-0.388** (0.092)	-0.374** (0.091)	-0.194* (0.083)	-0.177* (0.083)
Town	-0.217** (0.074)	-0.232** (0.073)	-0.183** (.065)	-0.201** (0.064)
Farm occupier	0.135* (0.048)	0.127** (0.048)	0.098* (0.041)	0.088* (0.041)
Constant	0.811	0.791	0.935	0.916
N	2,175	2,175	1,917	1,917
Pseudo R ²	0.010	0.009	0.008	0.007

Note: In columns 3 the constant refers to the average number of surviving children for an illiterate person in the omitted occupational group (laborers, sailors, and servants) in a rural parish. * = statistically significant at the 5% level, ** = statistically significant at the 1% level.

Table 8: Characteristics of Subsample versus the general population

Feature	Wrigley et al.	Sample of Wills with ages	Number
Age at First Marriage (1590-1639)	28.1	27.6	58
Time to birth of first known child (years)	1.33	1.91	69
Life expectancy at 25 (1640-9)	30.2	30.5	244

Sources: Wrigley et al. (1997), mean age at first marriage pp. 130, 134, 149, 165; life expectancy, p. 290, interval to first birth, p. 433.

Table 9: Intergenerational Mobility in Suffolk, 1620-38

Assets	Number of Males in First Generation	Share of first generation (%)	Male Adult Children	Share of second generation (%)
0 (no will)	2,204	61.0	(2,125)	49.8
0-10	140	3.9	135	3.2
10-24	101	2.8	107	2.5
25-49	125	3.5	158	3.7
50-99	211	5.8	294	6.9
100-199	260	7.2	398	9.3
200-499	288	8.0	491	11.5
500-999	116	3.2	220	5.2
1000-	68	1.9	137	3.2
1000- (higher court will)	100	2.8	(201)	4.7
All	3,613	100	4,266	100

Note: The numbers in brackets in column 4 are estimates from the observed reproductive success of the highest and lowest group of will makers in the archdeaconry courts.

Table 10: Survival of Landowners, Halesowen, 1270-1348

Family Type in 1270-82	Numbers of Families	Number of descendants holding land 1348	Percentage with descendant land holders
Rich	40	40	100
Middling	64	58	91
Poor	70	25	36
ALL	174	123	-

Source: Razi, 1981, p. 5.

Figure 1: The Basic Assumption of All Malthusian Models on Income and Fertility

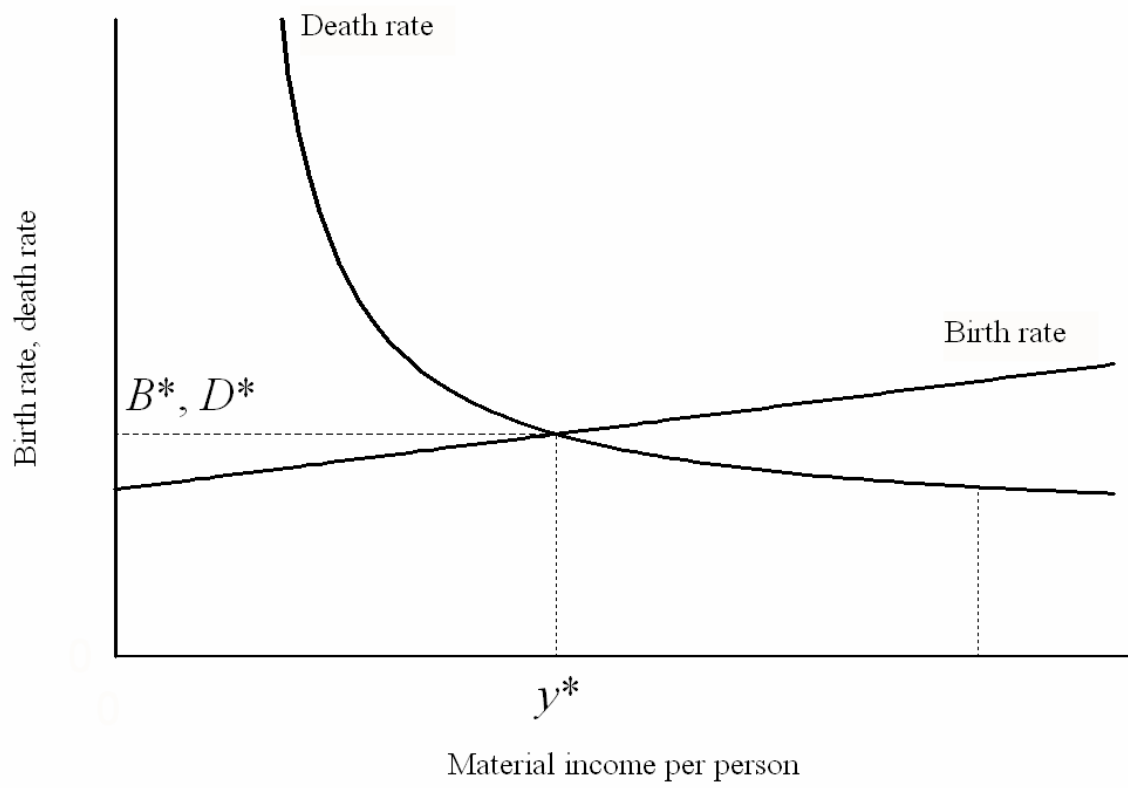


Figure 2: Surviving Children by estimated assets of Testator

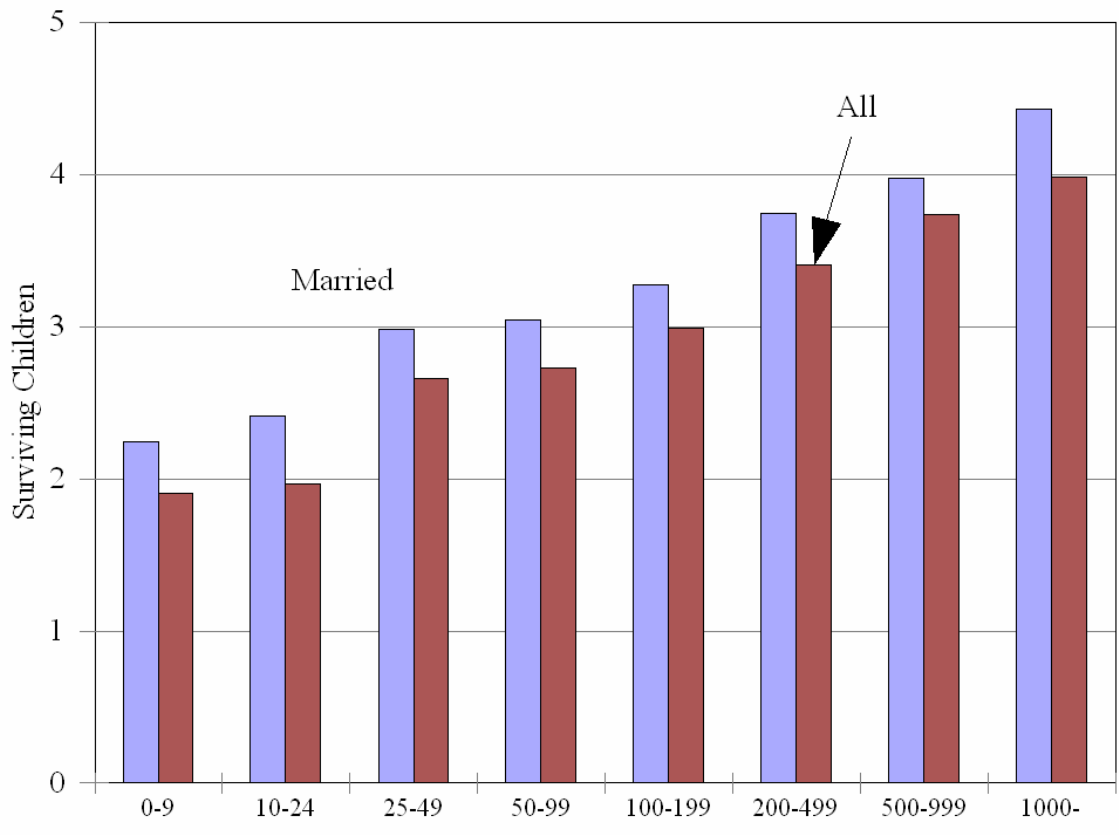


Figure 3: Chances of some heir by estimated assets of Testator

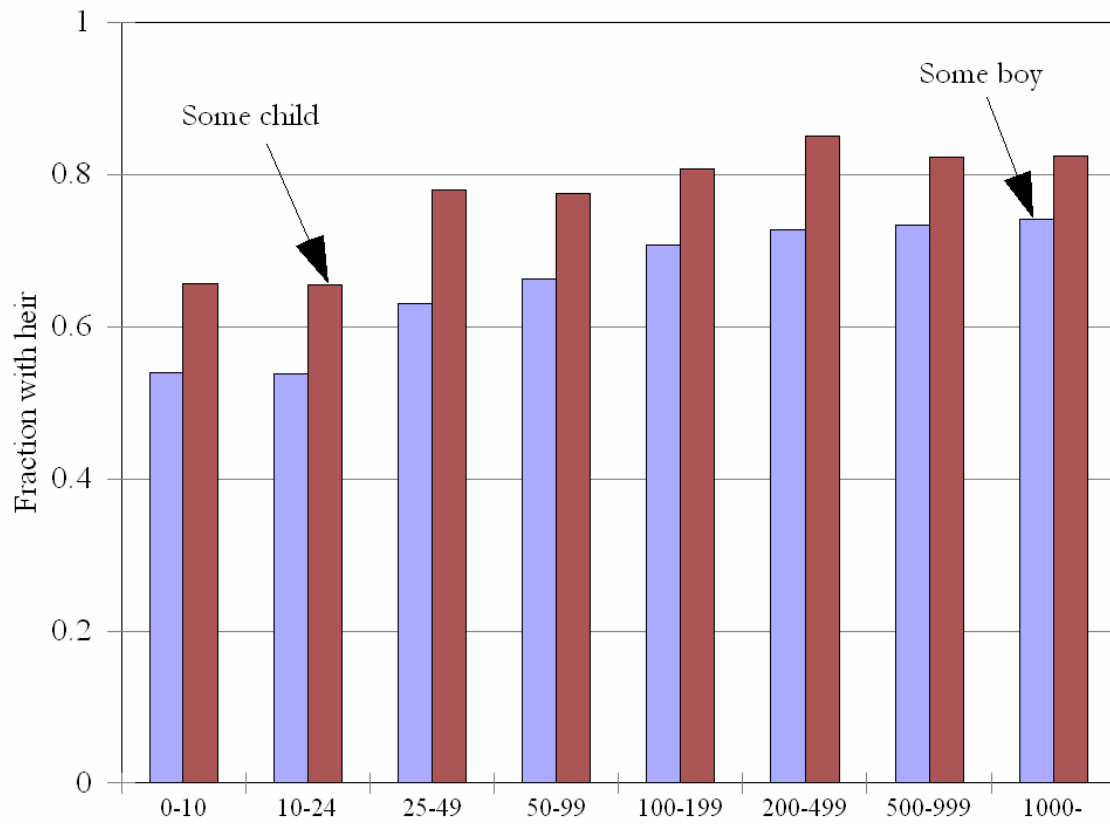
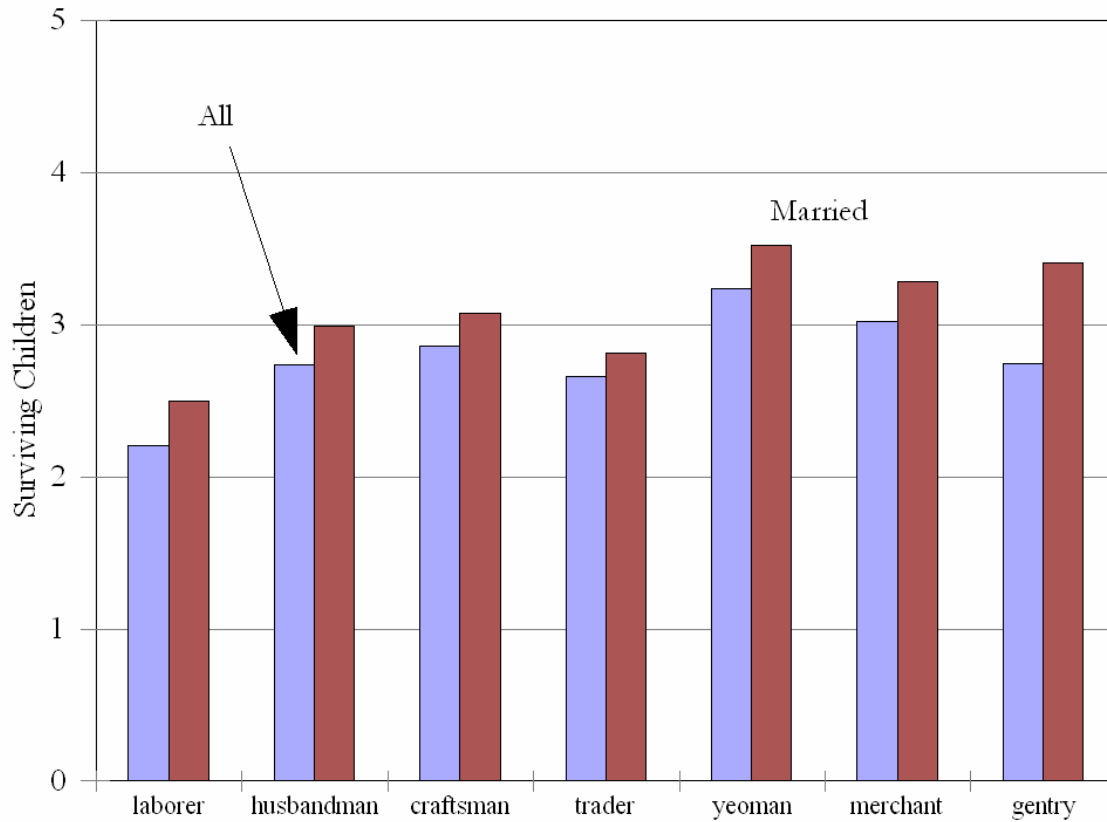


Figure 4: Surviving Children by Occupation of Testator



Note: The figure shows the number of surviving children by occupation, controlling for urban versus rural residency.

Figure 5: Age at Writing of Will and Assets Bequeathed

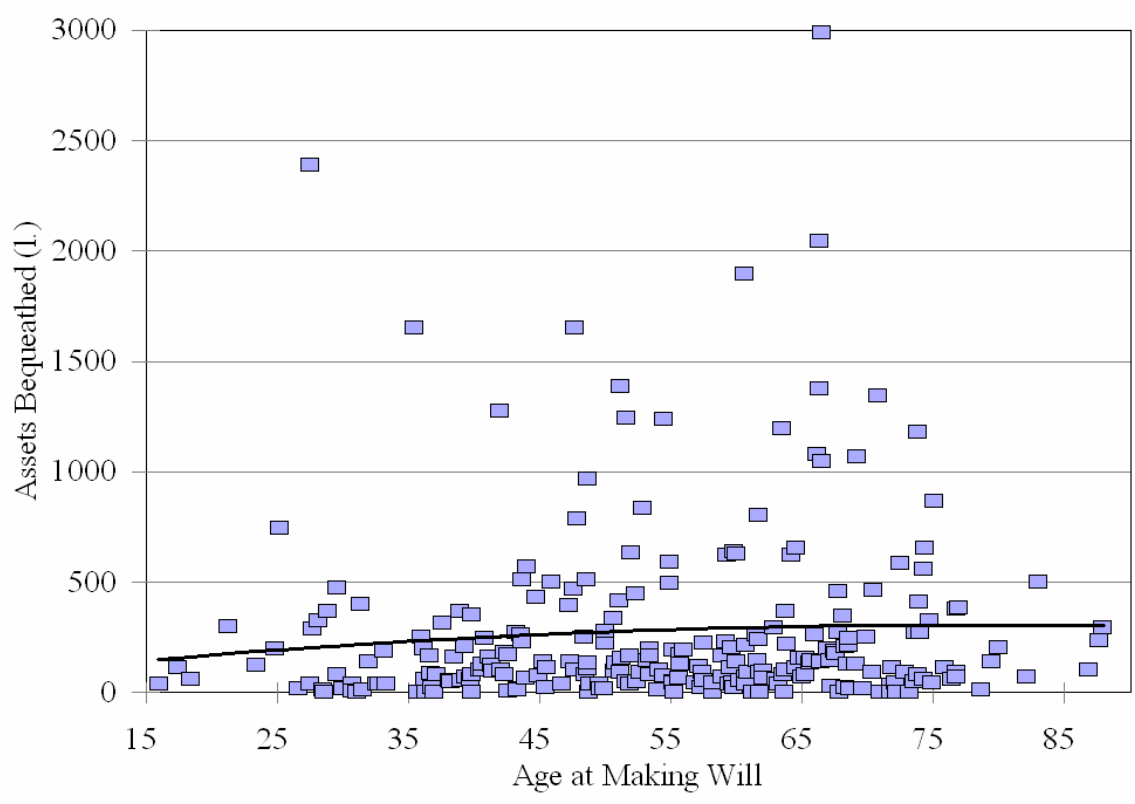
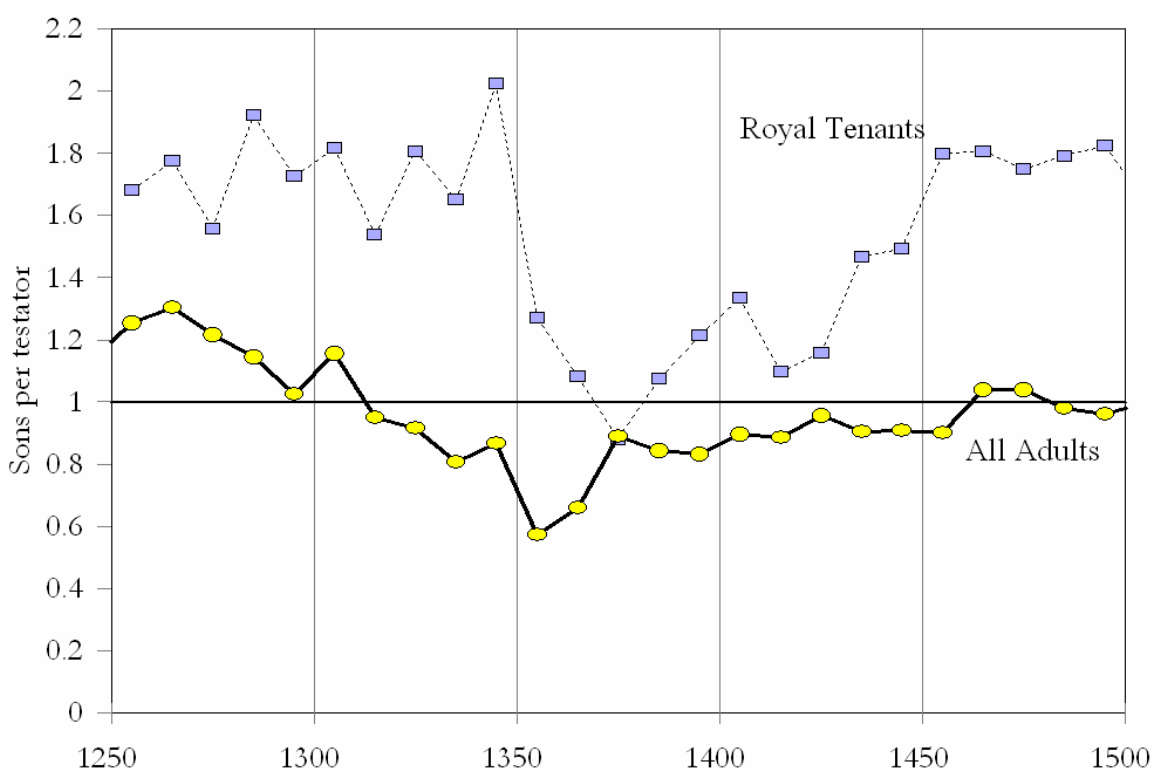


Figure 6: Surviving Children Controlling for Age of Testator



Notes: This figure is drawn from the 200 cases where we have the age of the testator as well as an estimate of the assets bequeathed. The figure is drawn standardized for testators aged 50 and above.

Figure 7: Sons per Testator, 1250-1500



Sources: Russell, 1948, pp. 240-2. Clark, 2006.