

Kari, Seppo; Karikallio, Hanna; Pirttilä, Jukka

**Working Paper**

## The impact of dividend taxation on dividends and investment : new evidence based on a natural experiment

CESifo Working Paper, No. 2756

**Provided in Cooperation with:**

Ifo Institute – Leibniz Institute for Economic Research at the University of Munich

*Suggested Citation:* Kari, Seppo; Karikallio, Hanna; Pirttilä, Jukka (2009) : The impact of dividend taxation on dividends and investment : new evidence based on a natural experiment, CESifo Working Paper, No. 2756, Center for Economic Studies and ifo Institute (CESifo), Munich

This Version is available at:

<https://hdl.handle.net/10419/30458>

**Standard-Nutzungsbedingungen:**

Die Dokumente auf EconStor dürfen zu eigenen wissenschaftlichen Zwecken und zum Privatgebrauch gespeichert und kopiert werden.

Sie dürfen die Dokumente nicht für öffentliche oder kommerzielle Zwecke vervielfältigen, öffentlich ausstellen, öffentlich zugänglich machen, vertreiben oder anderweitig nutzen.

Sofern die Verfasser die Dokumente unter Open-Content-Lizenzen (insbesondere CC-Lizenzen) zur Verfügung gestellt haben sollten, gelten abweichend von diesen Nutzungsbedingungen die in der dort genannten Lizenz gewährten Nutzungsrechte.

**Terms of use:**

*Documents in EconStor may be saved and copied for your personal and scholarly purposes.*

*You are not to copy documents for public or commercial purposes, to exhibit the documents publicly, to make them publicly available on the internet, or to distribute or otherwise use the documents in public.*

*If the documents have been made available under an Open Content Licence (especially Creative Commons Licences), you may exercise further usage rights as specified in the indicated licence.*

# The Impact of Dividend Taxation on Dividends and Investment: New Evidence Based on a Natural Experiment

Seppo Kari  
Hanna Karikallio  
Jukka Pirttilä

CESIFO WORKING PAPER NO. 2756  
CATEGORY 1: PUBLIC FINANCE  
AUGUST 2009

*An electronic version of the paper may be downloaded*

- *from the SSRN website:* [www.SSRN.com](http://www.SSRN.com)
- *from the RePEc website:* [www.RePEc.org](http://www.RePEc.org)
- *from the CESifo website:* [www.CESifo-group.org/wp](http://www.CESifo-group.org/wp)

# The Impact of Dividend Taxation on Dividends and Investment: New Evidence Based on a Natural Experiment

## Abstract

There is a lack of clear evidence of the ways in which dividend taxation affects dividend distributions and investment since the evidence is based mainly on the behaviour of large listed companies. This paper utilises a large register-based panel data set, where the vast majority of firms are small and medium-sized enterprises, to examine the responses to the Finnish dividend tax increase of 2005. This reform creates a useful opportunity to measure enterprise behaviour, since it involves exogenous variation in the tax treatment of different types of firms. The results, based on differences-in-differences estimation and matching methods, indicate that dividends declined somewhat in closely held corporations that faced a tax increase, perhaps for timing reasons, while investments did not decline. These findings are more in line with the new rather than the old view of dividend taxation.

JEL Code: H25, H32.

Keywords: corporate income taxation, dividends, investment, tax reform.

*Seppo Kari*  
*Government Institute for Economic Research*  
*Finland - Helsinki*  
*seppo.kari@vatt.fi*

*Hanna Karikallio*  
*Pellervo Economic Research Institute*  
*Finland - Helsinki*  
*hanna.karikallio@ptt.fi*

*Jukka Pirttilä*  
*University of Tampere*  
*Department of Economics*  
*Finland - 33014 University of Tampere*  
*jukka.pirttila@uta.fi*

This version: 4 August 2009

We are grateful to Kristiina Huttunen, Håkan Selin, Jan Södersten and seminar participants at the University of Copenhagen, the CESifo Area Conference on Public Economics, the Labour Institute for Economic Research and Government Institute for Economic Research for their useful comments. The financial support of the Nordic Tax Research Council, the Academy of Finland and the Taxation Economics Programme of the Norwegian Research Council is gratefully acknowledged.

## 1. Introduction

The best-known theories of how dividend taxation affects dividend distributions and investment behaviour are the so-called ‘old view’ (see for instance Harberger (1962), Feldstein (1970) and Poterba and Summers (1985)) and the ‘new view’ (see for instance King (1974), Auerbach (1979) and Bradford (1981)). According to the old view, the marginal source of funds is new equity, and dividend taxation distorts both dividend and investment decisions. The new view, on the other hand, assumes that, at the margin, investment is financed by cutting (or postponing) dividend distributions. In this setting, a constant dividend tax reduces both the cost of the investment and the future return in the same proportion and hence has no effect on the firm’s cost of capital or dividend distributions.<sup>1</sup> And, of course, a large number of alternative and complementary theories exist; these include the signalling theory (see for instance Bernheim (1991)) and the agency theory of Chetty and Saez (2007).

These theories mainly deal with the long-run impacts of dividend taxation. In recent years, an interesting new literature has emerged, in particular the papers by Auerbach and Hassett (2007) and Korinek and Stiglitz (2009), which also encompasses the short-run effects of dividend tax changes.<sup>2</sup> These impacts can arise if dividend tax changes are anticipated and the firm’s owners can therefore seek to minimise the tax burden over time, paying out extra dividends when the tax rate is low. Korinek and Stiglitz (2009) demonstrate that if firms face liquidity constraints, then an anticipated dividend tax increase, accompanied with above-average dividend distributions, can also reduce investments even if the long-run cost of capital does not change.

While the theories are well developed, there is still considerable uncertainty about the empirical magnitudes of these effects. Nonetheless, recent studies have successfully utilised policy reforms to isolate the causal impacts of tax changes. Such evidence is available for the Anglo-Saxon countries in particular (see e.g. Bond, Devereux and Klemm (2007) for UK evidence and Chetty and Saez (2005) and Auerbach and Hassett (2007) for the US). The findings in Auerbach and Hassett and Bond et al appear to be more in line with the new rather than the old view, whereas Chetty and Saez (2007) argue that the evidence regarding the US

---

<sup>1</sup> The ‘Nucleus’ theory by Sinn (1991) combines the views.

tax reform of 2003 is not readily compatible with either of the views. This finding is the basis for their analysis of dividend taxation from an agency point of view, where the asymmetry of information between the owners and managers of the company plays a key role. The existing evidence, in particular in studies aiming to find a causal impact of tax policy by studying tax reforms, is mainly based on the behaviour of large listed companies, where signalling and agency behaviour may indeed be very relevant. This also means that it may not be possible to arrive at a pure separation of the old vs. the new view using data from listed companies.

The present paper presents new evidence on the impacts of dividend tax changes on firm behaviour based on a corporate income tax reform that took place in Finland in 2005. This reform led, in particular, to increased taxation of dividends received by individual investors from domestic firms listed on the stock exchange.<sup>3</sup> The taxation of dividends paid to institutional investors or foreign owners did not change. In closely held corporations, dividends up to a certain threshold level were kept tax-free. The 2005 reform therefore increased the dividend taxation of some, but not all enterprises, and the tax treatment was based on determinants, such as ownership structure, that were to a large extent exogenous to the firm at the time of the reform. This suggests that the reform involved sufficient exogenous variation in tax treatment, and it therefore opens up a promising avenue for empirical work.

Our analysis is based on a large register-based data set covering all Finnish corporations. Thus the vast majority of our data is from small and medium-sized enterprises, where the main owner and the manager are often the same person. Therefore concerns about the role of asymmetric information between owners and managers or between firm representatives and investors are likely to be of less significance.

An additional motivation for our analysis stems from the need to design the Nordic dual income tax in a successful way. While all dual income tax systems of this type share the same key features (progressive tax on labour income, flat tax on capital income), there are significant differences in the institutional details of the systems. In particular, the earlier Finnish tax system was seen to offer generous opportunities for shifting labour income into more leniently taxed capital income (Lindhe, Södersten and Öberg 2004), while the new Norwegian tax design is probably well sheltered against this behaviour (Sørensen 2005). An

---

<sup>2</sup> For an early analysis of anticipation effects with policy uncertainty, see Alvarez, Kanninen and Södersten (1998), who also examine the impacts of a rate-cut-cum-base-broadening tax change on investment behaviour.

<sup>3</sup> The combined tax rate on distributed profit rose from 29 to 40.5 per cent.

increase in the dividend tax can basically reduce the scope for income-shifting, but on the other hand it can have undesirable consequences on investments. Analysing the linkages between dividend taxation and investment is therefore also of key importance for the proper design of dual income tax, which is of interest per se because of the increased attention being paid to dual income tax systems worldwide.

The analysis in this paper deals with differences in dividend payout and investment behaviour in the years following the 2005 reform compared to the years when the blueprint of the reform was not yet known (2000-2002).<sup>4</sup> The reason for this choice is that we want to have a base year for our analysis that purely reflects the earlier tax system. In our companion paper (Kari et al 2008), we concentrated on the changes of the anticipated tax increase in the years immediately before the tax reform. There we documented a large increase in dividend payments by firms that were likely to face a dividend tax increase in the future. A similar pattern was found by Alstadsaeter and Fjaerli (2009) for the years preceding the new Norwegian tax system of 2006.

The results in this paper, based both on regression-based differences-in-differences analysis and propensity score-matching, provide quite clear evidence that dividends declined in firms that faced an increase in dividend taxation.<sup>5</sup> Since there was a large and anticipated increase in dividend payments in the years before the reform when the coming reform was common knowledge (Kari et al 2008), much of the response in dividends after the reform is likely to be due to intertemporal tax planning or, in other words, timing effects. There are few robust signs, however, that investments declined. All this is probably more compatible with the new rather than the old view of dividend taxation, and it also appears that, at the aggregate level, firms that faced a tax increase were not cash-constrained in the years following their extra dividend payments.<sup>6</sup>

---

<sup>4</sup> Plans for the tax reform were unveiled in 2002 and 2003. Therefore dividend and investment behaviour were already affected by the anticipated reform as from 2003.

<sup>5</sup> While matching combined with difference-in-differences is often seen as a very promising estimator in labour economics applications (see e.g. Smith and Todd 2005), it has not been used to such a large extent in public economics. In that respect, one of the contributions of this paper is to narrow the gap in methods between these two areas of economics.

<sup>6</sup> Our results, therefore, confirm the ideas in Korinek and Stiglitz (2009) in respect of dividend payments, but not investment. However, the tax increase only hit relatively large, mature firms, where liquidity constraints are likely to be less severe. We would not want therefore to interpret these findings as a robust test of the implications of the Korinek and Stiglitz paper.

The paper proceeds as follows. Section 2 presents the institutional details and the contents of the Finnish tax reform. Section 3 discusses the theoretical predictions regarding firm behaviour based in the short run on modelling of investment and dividend decisions and in the long run under a dual income tax system. Section 4 describes the data and our empirical strategy. The results are presented in Section 5. Section 6 concludes.

## **2. The Finnish corporate income tax reform of 2005**

### *Dividend taxation before the 2005 reform*

Finland has applied a Nordic-type dual income tax since 1993, under which personal capital income is taxed at a flat tax rate and all other income (earned income) according to a progressive tax rate schedule. Prior to the 2005 tax reform the tax rate on capital income and corporate profits was 29 per cent<sup>7</sup>, while the top MTR on earned income was around 55 per cent.

A full imputation system was applied to prevent the double taxation of distributed profits. This system led to a zero effective tax rate on dividends at the shareholder level, because the tax rates on corporate profits and personal capital income were the same. Dividends from non-listed corporations, however, were treated differently. To avoid tax planning, induced by the wide tax rate gap between capital income and earned income, dividends from non-listed corporations were split into capital and earned income by categorizing capital income as an imputed return on the firm's net assets and interpreting the residual of income as earned income. The proportion of dividends taxable as capital income was calculated as a 9.585 per cent return on the firm's net assets.

One notable element of the pre-reform system was the taxation of net wealth. Personal net wealth above a threshold of 185,000 euros was subject to taxation at a rate of 0.9 per cent. The tax base was fairly narrow, however. Most types of interest-bearing assets were exempt and only 70 per cent of the current value of shares in listed firms was reckoned as taxable gross wealth. This share was only 30 per cent for closely held companies.

---

<sup>7</sup> The flat capital income tax rate was 25 per cent in 1993-1995 and 28 per cent in 1996-1999.

### *The 2005 reform*

The 2005 reform was the first major attempt to revise the tax rules for capital income since the tax reforms in the early 1990s, which introduced the dual income tax and the system of imputation credit. The 2005 tax reform lowered the tax rate on corporate profits from 29 to 26 per cent and the personal capital income tax rate from 29 to 28 per cent. The most important change from the point of view of this study was the replacement of the full imputation system by a partial double taxation of distributed profits under which 70 per cent of dividends are included in the recipient's taxable capital income. Another important element was the repeal of taxation of individual net wealth. This change was phased in as from 2006, one year after the other major changes.<sup>8</sup>

The splitting of dividends into capital and earned income was maintained in the 2005 tax reform with some fine tuning, however. The rate of the imputed return was lowered to 9 per cent. One major exception from the overall approach of the new dividend tax system was that the capital income part of dividends from non-listed corporations was made tax-exempt up to 90,000 euros. Any amount beyond that was taxed according to the main rule. The 70 per-cent rule was also applied to the earned income part of the dividend.

The 2005 reform led to increased taxation of dividends received by individual investors from Finnish listed firms (Table 2.1). The taxation of dividends paid to institutional investors or foreign owners was not changed. In closely held corporations, dividends up to the threshold level of 90,000 euros remained tax-free. For those receiving dividends in excess of that amount, the reform led to increased taxation. The 2005 reform therefore increased the dividend taxation of some, but not all enterprises, and the tax treatment was based on determinants, such as ownership structure, that were to a large extent exogenous to the firm at the time of the reform.



Table 2.1. Dividend taxation before and after the 2005 reform

	Previous tax system	2005 reform
Tax rate on corporate profits	29	26
Tax rate on capital income	29	28
Top MTR on earned income	55	55
Splitting parameter (effective)	9.585	9
ETR on capital gains	12	14
Method of dividend taxation	full imputation	partial relief
Combined tax rate on distributed profits:		
Listed firms :	29	40.5
Non-listed firms		
Capital income, Ö90 tþ	29	26
> 90 tþ		40.5
Tax rate on net wealth	0.9	0 (2006)

### 3. Theoretical background

This section discusses the changes in incentives to invest and distribute dividends caused by the 2005 tax reform. We first introduce three theories of the effects of dividend taxation: the old view, the new view and the irrelevance view, and discuss how these predict short-run and long-run behavioural changes. After that, we provide a more detailed analysis of the reform by studying the changes in firms' cost of capital, first for closely held corporations (all corporations not listed on the stock exchange) and then for listed companies. Finally, we discuss to what extent our data and the 2005 reform can be used to assess the theories presented in this section.

#### 3.1 Alternative views of dividend taxation

The old view of dividend taxation (Harberger 1962, 1966; Poterba & Summers 1985), assumes that the marginal source of funds to finance new investments is new equity issued in external capital markets. It predicts that dividend taxation raises the cost of capital and thus has a negative impact on investments, dividends and overall economic efficiency in the economy.

The new view (King 1974, Auerbach 1979, Bradford 1981), on the other hand, assumes that, at the margin, investment is financed by cutting dividend distributions. Hence the firms'

---

<sup>8</sup> The 2005 rules for net wealth tax included some complex mitigations.

marginal source of funds is retained earnings. In this setting, dividend taxes reduce both the cost of the investment and its future return. If the tax rate on dividends stays constant over time, it reduces both the costs and revenues in the same proportion, and hence has no effect on the firm's cost of capital or dividend distributions. The dividend tax terms cancel out the firm's investment condition. So, while the old view has it that the burden of dividend tax falls entirely on marginal investment projects and thus raises the cost of capital, the new view predicts that dividend taxes capitalize into share values and leave the cost of capital intact. Observe, however, the assumption of a constant dividend tax rate (new view).

The third key theory of the effects of dividend taxation, the irrelevance view (Stiglitz 1973), claims that, at the margin, firms finance their real investments with debt or by cutting their stock of financial capital. Due to the deductibility of interest costs in corporate taxation, the firm's cost of capital corresponds to the interest rate.<sup>9</sup> Corporate and personal taxes only fall on intra-marginal profits and leave the cost of capital unaffected.

While the new and old views analyse firm behaviour in the steady state (mature firm), the so-called nucleus theory, elaborated in Sinn (1991), expands the scope of the dividend tax theories to the birth and growth phases of a firm. It claims that the neutrality of the new view breaks down in the case of a growing firm, even if the marginal source of financing is retained earnings. It also claims that the cost of capital for the initial investment (the firm's birth stage), financed with outside equity, is high much higher than the cost of capital of mature firms, as suggested by the old view.

Recent research has discussed the implications of dividend tax theories in the case of an anticipated dividend tax change (Korinek and Stiglitz 2009, Auerbach and Hassett 2007 and Kari et al. 2008). Such tax changes induce firms to engage in inter-temporal tax arbitrage by shifting dividend payments from high-tax periods to low-tax periods. The goal is to reduce the present value of the owners' taxes. In the case of a future dividend tax hike, for example, firms will aim to benefit from the present low tax rate by increasing distributions before and reducing them after the tax increase. This short-run effect on dividends applies regardless of the marginal source of funds and hence under all the above three theories (Table 3.1). However, this shock slowly fades away and in the long run dividends return to their

---

<sup>9</sup> This assumes that the corporate tax base before interest deduction equals the economic profit.

equilibrium level. Observe that for the old view this long-run level is lower than the original level and for the new view and the irrelevance view the long-run level is basically the old one.

The short-run effect of an anticipated dividend tax cut on investment<sup>10</sup> seems more complicated. Under the old view it is likely that a dividend tax increase leads to a reduction in investment both before and after the reform. The reason is that the tax increase reduces the present value of after-tax dividends regardless of the timing of an investment, before or after the anticipated reform.

The new view basically predicts no change in investments after the reform but a decrease in investments in the anticipation phase. The reason for the latter outcome is that the tax increase reduces the present value of the after-tax dividend stream while the opportunity cost of investing is left unchanged. This increases the firm's cost of capital and affects negatively the amount invested before the reform (Korinek and Stiglitz 2009). After the reform, the opportunity cost of investing also declines and the cost of capital returns to its original level.

Under the tax irrelevance view the neutrality of dividend taxation in respect of investment applies both in the anticipation stage and after the reform. Investment is solely determined by the cost of debt, which is not affected by the tax treatment of dividends.

Note, however, that if firms are cash-constrained, the extra dividends paid by the firms in the anticipation phase can lead to reduced investments during the anticipation years and, if the effect is very strong, also during the first years after the reform. This can happen both under the tax irrelevance view and the new view.<sup>11</sup>

This discussion is summarised in Table 3.1, which summarises the predictions of the three theories for the short-run effects. The minus sign in parenthesis refers to the potential negative effects on investment in the case of credit-constrained firms.

---

<sup>10</sup> The reform may affect investment not only through the firm's cost of capital but also through second-order general equilibrium effects. We focus in this paper on the cost of capital effects.

<sup>11</sup> In the model by Korinek and Stiglitz (2009) investment opportunities are stochastic and due to capital market imperfections the firm holds cash balances to be able to quickly respond to investment opportunities as they arise. An increase in dividends as a response to an anticipated tax cut leads to a transitory reduction in cash balances and further to reduced investments until the optimal amount of cash has been restored through internal savings.

*Table 3.1 Short-run effects of an anticipated dividend tax cut*

	Dividend		Investment	
	Anticipation stage	After reform	Anticipation stage	After reform
Old view	+	-	-	-
New view	+	-	-	0 (-)
Tax irrelevance view	+	-	0 (-)	0 (-)

In Kari et al. (2008), we observe a sizeable abnormal increase in dividends by firms which expected an increase in dividend taxation in 2005. The observation was interpreted as evidence of an anticipatory response to the reform. As regards investment, however, we did not find any statistically significant change in the anticipation phase. Hence when we focus on the behavioural responses of firms to the reform in the years after its implementation, we may expect to find a (short-run) drop in dividends regardless of which theory best describes behaviour. For investments the situation is different. While the old view predicts an unambiguous drop in investments, the two other views predict an unchanged level of investment if firms are not credit-constrained in the years following the reform.

### **3.2 The effect of the tax reform on the cost of capital**

This section analyses the effects of the Finnish 2005 tax reform on the long-run cost of capital. The treatment is split into two sections because tax rules for non-listed and listed firms differ widely in the Finnish dual income tax system. Two alternative sources of finance are discussed: retained earnings and new share issues. The cost of capital for debt-financed investment did not change in the reform.

#### **Closely held corporations: the effects of the split model**

Under the Finnish dual income tax, all dividends received by individual shareholders from non-listed companies are subject to a split into capital income and earned income. Due to the tax rate gap between these income types, this system is likely to distort firms' investment and dividend decisions. These special incentive effects are non-existent in the case of listed firms.

Hietala and Kari (2006)<sup>12</sup> derive the following expression for the cost of capital of a non-listed company:<sup>13</sup>

$$(1) \quad \pi_K(K) = \alpha r - \beta \rho ,$$

where  $\pi$  depicts operating profit,  $K$  is the capital stock,  $r$  is the gross real rate of return required by the owner and  $\rho$  is the splitting parameter that determines the maximum amount of dividends taxable as capital income. Any dividends in excess of that amount of are taxed as earned income.

Assuming the new view case, under which investment is financed from retained earnings,  $\alpha$  takes the standard form

$$(2) \quad \alpha = \frac{1 - \tau_c}{(1 - \tau_f)(1 - \tau_g)}$$

where  $\tau_c$  is the (proportional) tax rate on capital income,  $\tau_f$  is the corporate tax rate and  $\tau_g$  is the accrual effective tax rate on capital gains.

If the firm's distribution exceeds the maximum amount of dividends taxable as capital income, i.e. dividends are taxed as earned income at the margin,  $\beta$  takes the value

$$(3) \quad \beta = \frac{\tau_e - \tau_c}{(1 - \tau_f)(1 - \tau_e)}$$

where  $\tau_e$  is the marginal tax rate on earned income.

Hence in (1) and in (2) and (3), the first term equals the standard-form expression of the cost of capital under the new view. The second term captures the special incentive effects of the Finnish DIT, produced by the tax rate gap and the method of calculating imputed capital income. For an owner with  $\tau_e > \tau_c$  the second term  $\beta\rho$  is positive and hence takes the firm's cost of capital below its standard level. Observe that the term depends on dividend taxes even if the new view assumptions are satisfied.

---

<sup>12</sup> Incentives in the Finnish tax system before the reform are also covered in Lindhe, Södersten and Öberg (2004).

<sup>13</sup> Here we leave aside the effect of net wealth taxation to simplify the analysis. For investors whose taxable net wealth exceeded the threshold this tax produced a small additional burden on equity-financed investment in the pre-reform tax system.

The 2005 tax reform mainly changed the values of the tax parameters but left the broader structure of the taxation of profits intact. Table 3.2 below shows the calculations made by Hietala and Kari (2006) on the cost of capital of non-listed firms in the old and the new tax system.<sup>14</sup>

The figures show that in the case where dividends are taxed entirely as capital income (Section A), the reform slightly lowered the cost of capital. This decrease is the result of two opposing changes. The cut in the corporate tax rate reduces the cost of capital (equations (13) and (16) in Hietala and Kari), while the increase in the effective capital gains tax rate increases it. Observe that the dividend tax rules, including the 90,000 euro threshold, do not have any effect here. This is an implication of the new view.

*Table 3.2. Cost of capital for non-listed firms in the old and new tax systems (retained earnings)*

Regime	Dividends taxed at the margin as í					
	A. Capital income	B. Earned income				
		Marginal tax rate on earned income				
		31.92	35.92	41.92	47.92	54.92
New system ≤ 90,000 p	<b>7.9</b>	4.4	3.8	2.9	1.8	0.32
		> 90,000 p	7.5	7.0	6.2	5.4
Old system	<b>8.0</b>	7.4	6.5	5.0	3.1	0.2

In the case where dividends are taxed as earned income at the margin (Section B), the nature of the change depends on the owner's marginal tax rate (MTR)  $\tau_e$  and also whether dividends exceed 90,000 euros or not. The cost of capital decreases in most cases when dividends are

<sup>14</sup> The calculations assume  $r=7\%$  and no inflation. The effective tax rate on capital gains  $\tau_g$  is 12 per cent under the pre-reform regime and 14 per cent under the post-reform regime, calculated using the approach introduced in King (1977).

below the threshold and increases in the opposite case. Observe that the cost of capital is very low, close to zero, when the owner's MTR is high.

We have thus far excluded the effect of the repeal of net wealth taxation as from 2006. This tax raised the level of the cost of capital by 0.4-0.6 percentage points if an entrepreneur paid this tax in the margin. So the effect of the repeal of the tax as from 2006 either made the reduction in the cost of capital larger or the increase smaller by the same amount.

Let us next consider the incentive changes in the old view case, i.e. when an investment is financed by new share issues (see Hietala-Kari 2006, Table 7). The changes follow a fairly similar pattern in the case where dividends are taxed as earned income. The reform increased the cost of capital for firms above the 90,000 euro threshold and lowered it below the threshold in most cases.

The main difference in the changes in the cost of capital between the two financing forms occurs when dividends are taxed entirely as capital income. The old view assumptions now lead to the outcome that the 90,000 euro threshold very much affects the level of the cost of capital. The parameters  $\alpha$  and  $\beta$  of the cost of capital formula (1) are now

$$(4) \quad \alpha = \frac{1 - \tau_c}{(1 - \tau_f)(1 - \tau_d)} \text{ and } \beta = 0.$$

Where  $\tau_d$  is the tax rate on dividends. It takes the value  $\tau_d = 0$  under the old system (due to the full imputation credit), and  $\tau_d = 0$  below the threshold (exemption) and  $\tau_d = 19.6\%$  above the threshold (70% taxable at 28%) under the new tax system.

*Table 3.3. The cost of capital for non listed firms, dividends taxed as capital income (new share issues)*

Regime	Old tax system	New tax system
Div $\leq$ 90,000 €	7.0	6.8
Div > 90,000 €	7.0	8.5

As Table 3.3 shows, the cost of capital is slightly reduced when dividends are below the threshold and the cost of capital is notably increased above the threshold. If we include the effect from the repeal of the net wealth tax, the reduction ( $\leq 90,000$  euros) is 0.4-0.6 per cent points higher and the increase ( $> 90,000$  euros) smaller by the same amount.

### Listed corporations

For listed corporations the cost of capital follows from (1) with  $\beta=0$  and  $\alpha$  as in (2) in the new view case and as in (4) in the old view case. Table 3.3 calculates the change in the cost of capital using the same parameter values as above.

*Table 3.4. The cost of capital for listed corporations*

Financing form	Old tax system	New tax system
Retained earnings (new view)	8.0	7.9
New share issues (old view)	7.0	8.5

### 3.3 Testable hypotheses

Consider first non-listed firms. The differences between Tables 3.1 and 3.3 provide an interesting opportunity to test to which model actual behaviour corresponds more closely. For this, we first divide firms into two groups: those that distribute dividends at the margin as earned income and those who distribute dividends at the margin as capital income. For the first group, the tax reform moved the cost of capital in the same direction both according to the old and the new view. This implies that the behaviour of firms that distribute excess dividends taxed as earned income cannot be used to distinguish between the old and the new view.

Firms that distribute dividends as capital income can be further divided into two groups: firms whose dividend distributions to the main shareholder are below the 90,000 threshold and



firms above the threshold. When dividends are below the threshold, there were no major changes in the cost of capital either in the old or the new view case. However, when dividends are above the threshold, the new view predicts that there were no major impacts in the cost of capital, whereas according to the old view the cost of capital increased substantially. This division can be used to separate firms into treatment and control groups. The treatment group consists of firms that distribute dividends as capital income and their dividend distribution is above the 90,000 threshold. All other firms are assigned to the control group.

If the old view is correct, investments in the treatment group should decrease, relative to the control group, due to an increase in the cost of capital as a result of the reform. If, however, the new view or the tax irrelevance view is correct and the firms are not cash-constrained, investments should not decrease more in treated firms. Hence we should be able to differentiate between the old view and the new and irrelevance views if investments do not decline. However, we do not have the tools to infer which of the latter two views explains the outcome. And if investments are really reduced, this could in principle be due to the old view or severe cash constraints that the firms will still have after having paid extra dividends before the reform. Regarding dividends, we expect to see a short-run drop in dividends after the reform and we will not be able to use this information in differentiating between the different views.

Consider finally companies that are listed on the stock exchange (Table 3.4). For all domestic individual owners, dividends became partially double-taxed after the reform. However, the dividend tax did not affect domestic institutional owners or foreign owners. This means that firms where most of the owners are domestic individual owners were more affected by the tax increase than companies with foreign or institutional owners. This means that the larger is the share of domestic individual owners, the more the cost of capital increased, , and therefore that the larger this share is the more investments should decrease.

#### **4. Data and the empirical approach**

The panel data employed contains information on the financial statements and taxation of Finnish corporations in the period 1999-2006. It was collected by the Finnish Tax Administration and is based on firms' tax declarations. The data set also includes tax return

information on the principal shareholders of all dividend-distributing corporations. In comparison to similar studies that use smaller data sets, an important quality of our data is that there is no restriction on the size of the firm or the sector it operates in. However, since the tax increase only affected relatively large firms, we removed the smaller half of closely held corporations (that is, 50% of firms according to the total value of their balance sheet) from our sample to reduce the heterogeneity between firms that were affected by the tax increase and firms in the control group. The descriptive statistics are presented in Appendix 1.

Our aim is to estimate the causal effects of a dividend tax increase on dividend distributions and investment. Since the tax treatment differs depending on the stock market status of firms, we examine listed and non-listed firms separately.

#### *Estimation strategy for non-listed firms*

Given what we know from Section 3, the idea is to investigate whether dividends and investments are lower in closely held corporations that faced a dividend tax increase in 2005. Since the tax increase is dependent on how much the firms pay out in dividends, firms can themselves influence their tax bill and thus their treatment status. To overcome this problem, we determine the treatment status based on pre-reform dividend levels at a time when the future tax details were unknown. Hence the firm is placed in the treatment group if it distributed a large amount (more than 90,000 euros) of normal dividends taxed as capital income before the reform. Otherwise the firm is placed in the control group. Using this strategy the treatment status is exogenous to the firms at the time of the tax increase.

This idea is analysed by the differences-in-differences approach. We first use regression-based differences-in-differences specifications of the following type (here for investments)

$$inv_{i,t} = \alpha_i + \beta X_{i,t} + \delta group_i + \eta after_t + \gamma group * after_{i,t} + \varepsilon_{i,t},$$

where *inv* denotes real investments in firm *i* at time *t*, measured either as investments-to-assets ratios or as the log of investments. The variable *group* is assigned a value of 1 if the firm is in the treatment group and otherwise 0, while *after* is a time dummy which is 0 before the reform and 1 after the reform. Our main interest is in the interaction of these two, the tax

increase variable *group\*after*, which is 1 in 2005 for firms whose dividends, taxed as capital income, exceeded the 90,000 euro threshold before the reform, and otherwise 0.

We also include a group of control variables,  $X$ . For the sake of comparability with the matching estimates (discussed below), the set of control variables is the same as those used in the matching procedure to explain the propensity score, and includes the number of employees, turnover, the total value of the balance sheet, the level of indebtedness, profits, and the third-order polynomial of all these variables. The constant is either the same for all firms or firm specific, depending on the specification. When we do not include a firm-specific dummy variable, the standard errors are adjusted for clustering by firms. When no firm-level fixed effect is included, we also include dummies for industry and region in the control variables.

The identifying assumption is that, apart from the tax increase, all other factors that affect investment behaviour stay constant over time, so that these unobservable factors can be captured by firm or group-level fixed effects. While unobservable factors can always be present, we are not aware of any other reasons why investment behaviour might change over these years differently for firms in different groups. The fact that we can separate firms depending both on their ownership status and the level of dividend payments implies that in our empirical strategy we can control for more differences among firms than is usually the case in empirical tax analysis. This, in our view, increases confidence in interpreting the estimates as causal effects.

To further reduce the scope for other potential differences between treated and non-treated firms, we combine propensity score matching with the difference-in-differences analysis, inspired by the ideas of Heckman, Ichimura and Todd (1997).<sup>15</sup> The benefit of this method is that it makes the treated firms and the control group firms as similar as possible in terms of the observable variables, which is likely to be important in our case, since the size of the firms in the control group is on average much smaller than the size of the treated firms.

In this method, we match firms according to their pre-reform observable variables and then examine if the change in investments differs between matched pairs of treated and non-treated

---

<sup>15</sup> For an intuitive overview of matching methods, see e.g. Blundell and Costa Dias (2000).

firms. In more formal terms, we estimate the average treatment effect on the treated (ATT) as follows:

$$ATT = \frac{1}{N_T} \sum_{i \in T \cap S} \left[ inv(1)_{it} - inv(0)_{it-1} - \sum_{j \in C \cap S} \omega_{ij} (inv(0)_{jt} - inv(0)_{jt-1}) \right],$$

where  $N_T$  is the number of units in the treatment group,  $T$  refers to the treatment group and  $C$  to the control group, and  $S$  denotes the region of common support (see below). The estimator compares the change in the outcome variable, here investment in treated firms, from the pre (time  $t-1$ ) to the post-reform (time  $t$ ) period,  $inv(1)_{it} - inv(0)_{it-1}$ , and to the weighted corresponding change in the control group,  $\sum_{j \in C \cap S_p} \omega_{ij} (inv(0)_{jt} - inv(0)_{jt-1})$ . Here 0 refers to a situation with no tax increase and 1 to the outcome with the tax increase, and  $\omega$  denotes the weight used for the control group observations.

The weights are determined on the basis of propensity score estimates. The idea is to explain the propensity score, i.e. the probability of facing a tax increase (in this case, that dividend payments are above the taxable threshold before the reform), with a set of observable variables. We use a probit regression to explain this probability using pre-reform values of the following variables: number of employees, turnover, total value of the balance sheet, level of indebtedness, and profits, and the third-order polynomial of all these variables. We use both nearest neighbour and kernel matching, using in the former case one nearest neighbour and in the latter case the Epanechnikov kernel. With nearest neighbour matching, each treated firm is matched with one firm from the control group with the nearest value for the propensity score. In the case of kernel matching, a number of control group firms are used as a comparison with each treated firm. These control group firms come from a certain area with the values of the propensity score close enough to the corresponding value for the treated firm. This area is called the bandwidth, and we also conduct sensitivity analysis in respect of the bandwidth in kernel matching. Within the bandwidth, firms closest to the treated firm, in terms of the propensity score value, get the highest weight.

The common support assumption (that only firms that have the characteristics of  $X$  that are simultaneously observed for both treated and control firms are compared) is invoked. As

usual, the standard errors are obtained by bootstrapping. Tests of how well matching succeeded are also provided.

Because the outcome variable is the change in investment, we can allow for time-invariant differences in levels of investment between firms in the treatment and the control groups. But of course we need to assume, as in the regression-based difference-in-differences analysis, that investments by firms in the control group would have evolved from the pre- to the post-reform period in the same way as investments by firms in the treatment group would have done had these firms not been treated.<sup>16</sup>

Above, we consider the impacts of the dividend tax increase on investments. We also examine the corresponding effects on actual dividend distributions. In the specifications above, investment variables are replaced with variables measuring dividend payments; all other variables and estimation techniques remain the same.

There are also some additional complications that need to be considered. First, the measure of how close to the threshold level the dividends are in the pre-reform period can affect the incentives to reduce dividends. We therefore examine the robustness of dividend and investment regression results to changes in the threshold levels for pre-reform dividends.

Second, and probably most seriously, we need to take into account that the reform was common knowledge as of the latter part of 2003, when the government's tax reform plan was published. Even a year before that, in November 2002, an initial blueprint for the reform, designed by a group of tax lawyers nominated by the government, was unveiled. This plan also included a tightening in the tax treatment of dividends. For these reasons, company managers had ample time to plan dividend distributions in advance so as to obtain tax savings by distributing relatively more dividends before than after the reform. In Kari et al (2008), we indeed find strong empirical support that dividend payments increased in 2003 and 2004 in firms that anticipated a tax increase on their dividend distributions after the reform. If we simply took the 2003 or 2004 values, we would therefore mistakenly document a strong drop

---

<sup>16</sup> Since we examine a balanced panel where the difference in investment is measured within the same firm, there is less need to use the post-reform values of observable variables in matching than would be the case if the data came from repeated cross-sections. For an analysis (for a different research topic) where matching combined with difference-in-differences is used in the same manner as here, see Huttunen (2007).

in dividend behaviour for treated firms after the reform. In order to deal with this problem, the pre-reform data is taken from years when the tax bill was unknown. In the basic analysis, we use the mean values for 2000-2002, but we also analyse the sensitivity of the results to the selected pre-reform years. The year after the reform is 2006, when all the elements of the tax reform were in force and the tax rules should have been common knowledge to company managers.

#### *Estimation strategy for listed firms*

In listed firms, the larger the share of domestic individual owners (continuous treatment), the more the effective dividend tax increased. Therefore, the estimated equations take the form

$$inv_{i,t} = \alpha_i + \beta X_{i,t} + \delta share_i + \eta after_t + \gamma share * after_{i,t} + \varepsilon_{i,t},$$

where *share* refers to the ownership share of individual domestic owners. Again, the coefficient of interest is that of *share\*after*, measuring the impact of the tax increase in 2005. The constant term can either be firm-specific or not. If it is not, then the set of control variables (*X*) includes region and industry dummies. In all cases, we control for the size of the firm and its profitability. We also check whether the results remain the same if, instead of continuous treatment, firms are divided into two groups depending on whether domestic individual owners own more than 50% of the firm (treatment group) or not.

## **5. Empirical results**

For a preliminary view of what the data is telling us, we compare the pattern of mean dividends between the treatment and control groups in the period of 1999-2006 in Figures 5.1 and 5.2.

Figure 5.1 Median dividend in listed corporations

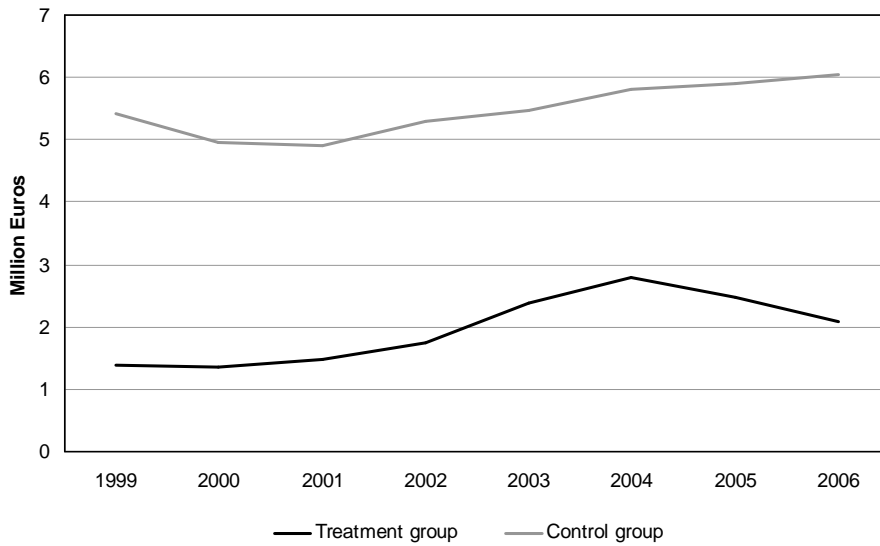
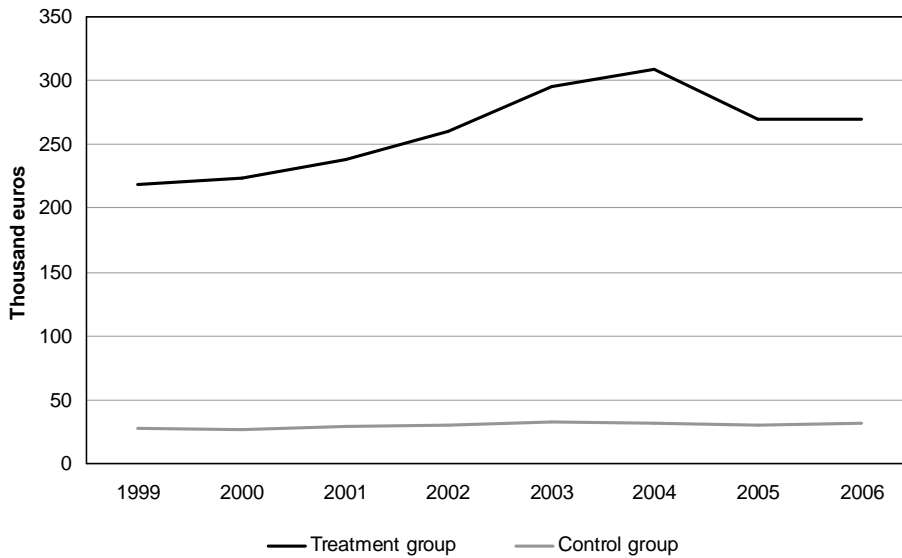


Figure 5.2 Median dividend in non-listed corporations



This information suggests that the median dividend in the treatment group increased in 2003 and 2004 compared to the mean dividend in the control group. This is probably a sign of

anticipation effects; more about this in Kari et al 2008. However, a more relevant observation from this paper's point of view is a moderate decrease in treatment group dividends compared to control group dividends in 2005.

Table 5.1 provides more information on the mean change in dividends and investments in treatment and control firms.<sup>17</sup> In non-listed firms, dividends increased in firms in the control group, whereas they fell in treated firms. Investments in non-listed firms do not follow any clear pattern. In listed firms, dividends increased and investment dropped, but there were no systematic differences in these changes between treatment and control firms.

*Table 5.1 Comparison of treated and non-treated firms.*

a) Non-listed firms

	ddivid, million p	dlogdivid	dinv, million p	dloginv
non-treated	.033929 (3.073787) [42489]	.4128043 (1.007568) [21081]	-.0780709 (14.02529) [43866]	-.1520273 (1.783085) [26931]
treated	-.0725417 (1.002207) [800]	-.0537045 (.8754251) [653]	.0094096 (1.378833) [808]	-.3917077 (1.525629) [598]

b) Listed firms

	ddivid, million p	dlogdivid	dinv, million p	dloginv
non-treated	9.388596 (171.1179) [84]	.7592586 (1.015789) [59]	-6.606392 (56.93541) [82]	-.2550419 (1.872465) [79]
treated	3.360575 (14.58871) [37]	.5090159 (.7642247) [25]	-.3964901 (4.636289) [34]	-.2230041 (1.903146) [34]

Notes: The mean change in dividends (ddivid), the log of dividends (dlogdivid), investments (dinv) and the log of investments (dloginv) in firms facing a tax increase or not. Standard errors in parentheses and the number of observations in squared brackets.

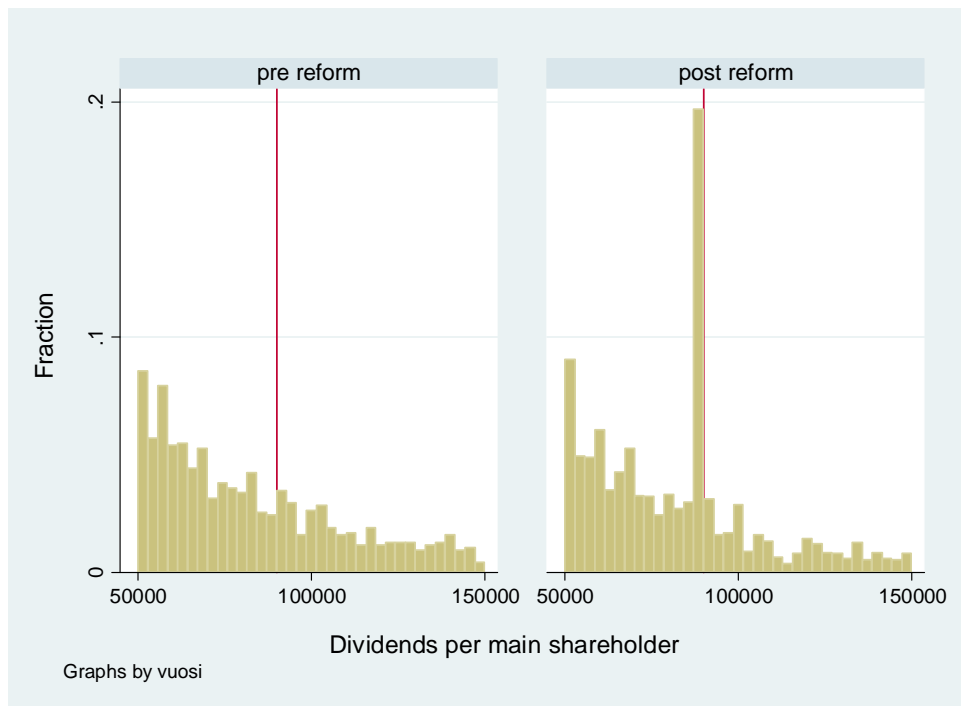
## 5.1 Dividends in non-listed firms

<sup>17</sup> For expositional purposes, listed firms are also divided here into treatment and control groups, depending on whether the main shareholder is a domestic individual owner or not.



As argued above, our interest is to examine whether dividends per shareholder were reduced below the threshold level of 90,000 euros. Some support for this hypothesis is received from Figure 5.2, which plots the distribution of dividends before and after the reform. In the interval of 50,000 to 200,000, one can see a peak under the 90,000 threshold (the vertical line) where dividends become taxable in 2005. There were no peaks around that dividend level in any years before the reform.

Figure 5.2 Distribution of dividends in non-listed firms before and after the tax reform.



The actual estimation results concerning the change in the magnitude of all dividends<sup>18</sup> paid out by non-listed corporations are presented in Table 5.2. We used both dividends directly (in millions of euros) and the logarithm of dividends as dependent variables. The estimation results of the model specification with a group dummy are presented in columns (1) and (3) and the results of the specification with a firm-level dummy in columns (2) and (4). As discussed above, our main interest is in the interaction of the group and time variables. This interaction variable is called *tax increase* in our estimation tables. It shows the impact of the

<sup>18</sup> In the regressions below, the dependent variable is all dividends paid by the firm instead of dividends to the main shareholder. If we used the latter measure, we might document a dividend drop even if total dividends did not decrease but the owner directed part of his own dividends to other family members. Therefore, our dependent variable is closer to the notion of real behavioural changes. We return to this issue in Section 5.3

tax increase on the magnitude of the dependent variable - in this case on distributed dividends. For every specification, we report the coefficient of the *tax increase* variable and its robust p value.

*Table 5.2 Dividend responses in non-listed corporations*

	(1)	(2)	(3)	(4)
	Dividends	Dividends	Log(Div)	Log(Div)
tax increase	-0.154 (0.044) *	-0.068 (0.181)	-0.301 (0.000) **	-0.356 (0.000) **
time dummy	X	X	X	X
group dummy	X		X	
firm dummy		X		X
other ctrl vars	X	X	X	X
Observations	108213	108213	58999	58999
R-squared	0.256	0.256	0.655	0.160

Robust p values in parentheses. Other control variables include the number of employees, turnover, the total value of the balance sheet, the level of indebtedness, and profits, and the thirdorder polynomial of all these variables, as well as region and industry dummies in specifications without a firm-level fixed effect.

\* significant at 5%; \*\* significant at 1%

As can be seen, the results regarding dividend distributions are not completely robust. However, model (4), where firm-specific variation is reduced with the firm-level dummy variable, and dividends are measured in log terms, is probably the most reliable case. According to this model, dividends declined in a statistically significant way in firms that faced a tax increase. The percentage change  $\delta$  and this is what regression (4) measures  $\delta$  was also large in financial terms: more than 30%.

We now proceed to the results from matching combined with differences-in-differences. Dividends per total firm assets and the logarithm of dividends are used as dependent variables. The tables in Appendix 2 analyse the success of our matching procedures. As expected, the treated firms are much bigger in every respect than the control firms before

matching, but both the nearest neighbour and the kernel matching methods succeed in reducing these differences to a very large extent.<sup>19</sup>

The estimates of the average treatment effects on the treated (ATT) are reported in Table 5.3. We report the coefficient of the treatment effect and the bootstrapped standard errors. The coefficient of the ATT is statistically significant in models with logged dividends and negative but not so significant in models with dividends in euros as the outcome variable. When firms are matched, the results provide some evidence that dividend distributions declined in firms that faced a tax increase. In addition, the point estimate also increases, suggesting that dividends dropped by roughly 40 per cent in firms whose dividend taxation increased. Among the estimators we study, propensity score matching with the outcome variable in the first differences probably performs best by eliminating potential biases most effectively.

*Table 5.3 Dividend responses in non-listed corporations: Matching estimates*

	d(Dividends)		dLog(Divid)	
	NN	Kernel	NN	Kernel
ATT (std error)	-0.310 (0.179)	-0.215** (0.079)	-0.417** (0.091)	-0.387** (0.053)
Obs	693	37865	570	19395

Results from propensity score matching, dependent variable either the change in dividends or the change in the log of dividends. The propensity score is estimated with a probit model with the number of employees, turnover, the total value of the balance sheet, the level of indebtedness, and profits, and the third-order polynomial of all these variables as explanatory variables. The common support assumption is invoked. Bootstrapped standard errors in parenthesis. The matching method is either nearest neighbour or Epanechnikov kernel matching with a bandwidth of 0.05.

In sum, while the results regarding dividend distributions are not entirely robust, it seems that reducing the scope for the potential differences between the treated and non-treated firms indicates that dividends decreased more in firms that faced higher taxes.

One potential worry in the estimates below is that the results are sensitive to some extraordinarily large dividend payouts in pre-reform years (2000-2002), which put some firms in the treatment group even if they in some sense should not be there. To examine the

<sup>19</sup> Using a somewhat smaller or larger bandwidth did not affect the qualitative results.

seriousness of this risk, we determined the treatment status on the basis of mean dividends in 1998-2002, which reduces the weight given to outlying values from a single year. The results remained essentially the same with this modification.<sup>20</sup>

We also conduct sensitivity analysis in respect of the limit of 90,000 euros. The treatment consists of firms whose dividend payments exceeded the threshold *before* the reform, which means that the limit that affected the behaviour of firms might differ from 90,000 euros. In addition, the tax reform of 2005 reduced the corporate tax rate from 29 to 26 per cent. In some cases, this reduction lowered the total tax burden of a firm even if its dividends exceeded 90,000 euros. The results of the sensitivity analysis concerning both dividend and investment, based on matching methods  $\delta$  since these are our preferred specifications  $\delta$  are reported in Appendix 3. The pattern of the results remains broadly the same irrespective of whether the treatment group consists of firms whose dividend payments exceeded either 70,000 or 100,000 euros before the reform. However, the dividend drop appears to be bigger, the higher the threshold value used.

## 5.2 Investment in non-listed firms

We next consider investment responses in non-listed corporations. The models are similar to those used in the dividend regressions. Table 5.4 below reports the results of difference-in-difference estimation. Again, we use both investments per total firm assets and the logarithm of investments as dependent variables. The models include either a group dummy or a firm-level dummy. The control variables are the same as earlier.

Table 5.4 reveals that the estimation results regarding investments are otherwise not significant, whereas in model (3), without firm-level fixed effects, the effect of the tax increase appears negative and significant. Again, since there is huge variation within the firms, the models with a firm-level fixed effect provide more reliable results. According to these models (2) and in particular (4), investments did not decline. Thus there is no robust evidence that investments declined because of the tax increase.

---

<sup>20</sup> These results are available from the authors upon request.

*Table 5.4 Investment responses in non-listed corporations*

	(1)	(2)	(3)	(4)
	Investment	Investment	Log(Inv)	Log(Inv)
tax increase	0.033 (0.757)	0.224 (0.405)	-0.255 (0.000) **	-0.083 (0.192)
time dummy	X	X	X	X
group dummy	X		X	
firm dummy		X		X
other ctrl vars	X	X	X	X
Observations	108996	108996	71262	71262
R-squared	0.042	0.048	0.422	0.020

Robust p values in parentheses. Other control variables include the number of employees, turnover, the total value of the balance sheet, the level of indebtedness, and profits, and the third-order polynomial of all these variables, as well as region and industry dummies in specifications without a firm-level fixed effect.

\* significant at 5%; \*\* significant at 1%

The matching models with difference-in-differences concerning investment behaviour are estimated similarly as in the case of dividends. The estimates of the average treatment effects on the treated (ATT) and bootstrapped standard errors are reported in Table 5.6. When the treatment and control groups are made more alike by using matching methods, the results regarding investments are all insignificant.<sup>21</sup> This conclusion is not dependent on choosing matching as the estimation technique. This can be shown if we include all the same control variables (and their second and third power) in the regression equation with a firm dummy for the sample used in matching and fulfilling the common support assumption. Then the specification is as close to the matching set-up as possible, but the estimation is conducted with standard linear methods. In this case, the coefficient for the tax increase variable is not significant either.

<sup>21</sup> The sensitivity analysis of investment matching models in respect of the threshold level that divides firms into treatment and control groups, reported in Appendix 3, comes to the same conclusion. In addition, the lengthening of the pre-reform period to cover years from 1998-2002 does not affect the results (similarly as for dividends.)

All in all, the results concerning investment responses in non-listed corporations tend to suggest that investments are relatively inflexible, and they do not on the whole react to tax changes.

*Table 5.3 Investment responses in non-listed corporations: Matching estimates*

	d(Investment)		dLog (Inv)	
	NN	Kernel	NN	Kernel
ATT (std error)	0.339 (0.444)	0.101 (0.144)	-0.050 (0.121)	-0.017 (0.065)
Obs	697	38365	562	25358

Results from propensity score matching, dependent variable either the change in investment or the change in the log of investment. The propensity score is estimated with a probit model with the number of employees, turnover, the total value of the balance sheet, the level of indebtedness, and profits, and the third-order polynomial of all these variables as explanatory variables. The common support assumption is invoked. Bootstrapped standard errors in parenthesis. The matching method is either nearest neighbour or Epanechnikov kernel matching with a bandwidth of 0.05.

### 5.3 An additional margin: changes in ownership

Since the 90,000 euro threshold is defined per person, owners of family firms could potentially also influence their tax payments by spreading their ownership within their family. We examine this using similar regression techniques as above, but with the ownership share of the main owner as the dependent variable.<sup>22</sup> The hypothesis then is that owners whose dividends were large before the reform have a stronger incentive to reduce their own ownership and distribute it to e.g. their children. The results (not reported here for the sake of space) reveal that the sign of the tax increase variable is indeed negative, but it is not statistically significant. Owners might have thus lowered their tax burden by other means than simply cutting dividends. In any case, the measured dividend drop above represents a real decrease in dividends since the dependent variable was all dividends paid by the firm.

### 5.4 Results for listed firms

The impact of the tax increase faced by listed firms on the magnitude of dividends and investments is analysed using the same simple difference-in-difference estimation strategy as in the case of non-listed firms. As earlier, we have two model specifications: one with a group

dummy and another with a firm dummy. Again, we used both dividends (investments) per total firm assets and the logarithm of dividends (investments) as dependent variables.

Our main interest is in the interaction between the proportional share of domestic individual ownership and time variables.<sup>23</sup> In the case of listed firms, this measures the impact of the tax increase in 2005. This is the variable *tax increase* in the estimation tables. We used the same sets of control variables as in the previous analyses. The proportional share of ownership by domestic individuals (*dom ownership*) is an additional control variable in specifications without a firm-level fixed effect.

*Table 5.7 Dividend responses in listed corporations*

	(1)	(2)	(3)	(4)
	Dividends	Dividends	Log(Div)	Log(Div)
tax increase	-15.135 (0.612)	-47.373 (0.087)	-0.484 (0.513)	-1.158 (0.024)*
time dummy	X	X	X	X
dom ownership	X		X	
firm dummy		X		X
other ctrl vars	X	X	X	X
Observations	189	189	124	124
R-squared	0.671	0.349	0.806	0.625

Robust p values in parentheses. Other control variables include turnover, profitability and employment as well as region and industry dummies in specs without a firm-level fixed effect.

significant at 5%; \*\* significant at 1%

The estimation results regarding dividends (Table 5.7) mostly suggest that dividends in listed companies did not drop more in firms that experienced a tax increase. The results across specifications regarding investment (Table 5.8) indicate that investments did not change in response to the tax reform. We conclude that listed firms did not change their dividend or investment policy even when they faced fairly high tax increases. This implies that taxation

<sup>22</sup> The data set does not contain a more direct measure of ownership within the family.

<sup>23</sup> We also categorised the share of ownership variable by dummy variables and used it and their interactions with the time variable in the estimation models. However, this did not change the results.

has only a minor impact on the financing decisions of listed firms or that it takes longer for the effects of the tax increase to materialise.

---

*Table 5.8 Investment responses in listed corporations*

---

	(1)	(2)	(3)	(4)
	Investment	Investment	Log (Inv)	Log (Inv)
tax increase	-13.063 (0.134)	-3.569 (0.582)	-0.349 (0.649)	0.215 (0.733)
time dummy	X	X	X	X
dom ownership	X		X	
firm dummy		X		X
other ctrl vars	X	X	X	X
Observations	186	186	135	139
R-squared	0.747	0.236	0.782	0.384

---

Robust p values in parentheses. Other control variables include turnover, profitability, employment and indebtedness as well as region and industry dummies in specs without a firm-level fixed effect.

\* significant at 5%; \*\* significant at 1%

---

## 6. Conclusion

This paper examines how dividend distributions and investments in Finnish corporations reacted to the 2005 corporate and capital income tax reform. Since the reform treated different types of corporations differently, it involved exogenous variations to their tax treatment, offering an opportunity for promising empirical estimates. In addition, as the vast majority of our data comes from non-listed companies, the analysis is not blurred ó at least to a large extent ó by concerns of asymmetric information between owners and managers.

Our results indicate that dividend distribution declined somewhat after the reform. Since there were large anticipatory increases in dividend distributions before the reform, this drop can also be a reaction to these earlier, abnormally large dividend distributions. This part of the



results therefore serves as further confirmation of the results by Korinek and Stiglitz (2009): anticipated tax changes lead to large impact on the timing of dividends. Since dividends can be altered due to intertemporal tax planning also under the new view, the drop in dividend distribution is compatible both with the old and the new view of dividend taxation.

The results regarding investment do not indicate that investments declined more in firms that were subject to a dividend tax increase. While this result must be interpreted cautiously because our data covers a relatively short period (two years) after the reform, it is perhaps more in line with the new rather than the old view of dividend taxation. Since the reform was also known roughly two years in advance, the effective reaction time for investment decisions that we measure covers approximately four years, thus increasing the likelihood that at least part of the long-term reactions are captured.

Another possibility is that firms suffer from liquidity constraints, and thus have lower investment activity after paying extraordinarily high dividends in the years before the reform, but on average this does not appear to be the case either for firms in our data set. However, because the dividend tax hike in the Finnish case hit mature firms which were able to pay large dividends even before the reform, this reform does not open up the best possibility to examine the link between liquidity constraints and investments. And of course, even if this dividend tax did not affect the investment of (mature) firms, a different kind of dividend tax increase (which would also be faced by firms that are more likely to be young, growing firms) could have different impacts.

## References

- Alstadsaeter, A. and E. Fjaerli (2009) Neutral taxation of shareholder income? Corporate responses to an announced dividend tax, forthcoming in *International Tax and Public Finance*.
- Alvarez, L.H.R., Kannianen, V. and J. Södersten (1998) Tax policy uncertainty and corporate investment. A theory of tax-induced investment spurts. *Journal of Public Economics* 69, 17-48.

- Auerbach, A. (1979) "Wealth maximization and the cost of capital", *Quarterly Journal of Economics* 94, 433-436.
- Auerbach, A. & K.A. Hassett (2007): The 2003 Dividend Tax Cuts and the Value of the Firm: An Event Study. In Auerbach, A. & Hines, J.R. & Slemrod, J. (eds.): *Taxing Corporate Income in the 21st Century*, Cambridge University Press.
- Bernheim, D. (1991) Tax policy and the dividend puzzle. *RAND Journal of Economics* 22, 455-76.
- Blundell, R. and M. Costa Dias (2000) Evaluation methods for non-experimental data, *Fiscal Studies* 21, 427-468.
- Bond, S.R. & M.P. Devereux & A. Klemm (2007): Dissecting Dividend Decisions: Some Clues about the Effects of Dividend Taxation from Recent UK Reforms. In Auerbach, A. & Hines, J.R. & Slemrod, J. (eds.): *Taxing Corporate Income in the 21<sup>st</sup> Century*, Cambridge University Press
- Bradford, D. F. (1981) "The incidence and allocation effects of a tax on corporate distributions", *Journal of Public Economics* 15, 1-22.
- Chetty, R. & E. Saez (2005): Dividend taxes and corporate behavior: Evidence from the 2003 dividend tax cut. *Quarterly Journal of Economics*, vol CXX, 791-833.
- Chetty, R. and E. Saez (2007) An agency theory of dividend taxation. NBER Working Paper No. 13538.
- Feldstein, M. (1970) "Corporate taxation and Dividend Behavior", *Review of Economic Studies* 37, 57-72.
- Harberger, A.C. (1966) "Efficiency effects of taxes on income from capital", in: M. Krzyzaniak, ed., *Effects of corporation income tax* (Wayne State University Press, Detroit).
- Heckman, J., H. Ichimura and P. Todd (1997) Matching as an econometric evaluation estimator, *Review of Economic Studies* 64, 605-54.
- Hietala, H. & Kari, S. (2006): Investment Incentives in Closely Held Corporations and Finland's 2005 Tax Reform, *Finnish Economic Papers* 19, 41-57.

- Huttunen, K. (2007) The effect of foreign acquisition on employment and wages: Evidence from Finnish establishments, *Review of Economics and Statistics* 89, 497-509.
- King, M.A. (1974) Taxation and the cost of capital, *Review of Economic Studies* 41, 216-35.
- Kari, S., H. Karikallio and J. Pirttilä (2008) Anticipating tax changes: Evidence from the Finnish corporate income tax reform of 2005, *Fiscal Studies* 29, 167-196.
- Korinek, A. and Stiglitz, J.E. (2009) Dividend taxation and intertemporal tax arbitrage, *Journal of Public Economics* 93, 142-159.
- Lindhe, T. & Södersten, J. & Öberg A. (2004): Economic effects of taxing different organizational forms under the Nordic dual income tax. *International Tax and Public Finance* 11, 469-486.
- Poterba, J. and L. Summers (1985) The Economic Effects of Dividend Taxation, in E. Altman and M. Subrahmanyam, eds. *Recent Advances in Corporation Finance* (Homewood, IL: Dow Jones-Irwin), 227-284.
- Sinn, H.-W. (1991) The vanishing Harberger triangle, *Journal of Public Economics* 45, 271-300.
- Smith, J.A. and P.E. Todd (2005) Does matching overcome LaLonde's critique of nonexperimental estimators? *Journal of Econometrics* 125, 305-353.
- Sørensen, P.B. (2005). Neutral taxation of shareholder income, *International Tax and Public Finance* 12, 777-801.

## APPENDIX 1: Descriptive statistics

	Obs	Mean	Std. Dev.	Min	Max
<b>NON-LISTED FIRMS</b>					
Dividends*	129255	.0853564	2.280798	0	600
Investment*	134138	.2084316	8.528886	0	2813.623
Turnover*	139520	3.403713	53.85463	0	11512.61
Nr of personnel	138899	21.11148	150.0728	0	16842
Balance sheet*	139451	6.614561	161.4212	.1288697	45093.78
Profit*	137436	-.6361726	301.3087	-111680.5	1743.529
Debt*	139397	2.519004	103.8281	-12.97514	26640.72
Net assets*	135867	1.263971	18.34198	-519.2112	2593.67
<b>LISTED FIRMS</b>					
Dividends*	267	45.31508	270.1771	0	4000
Investment*	257	13.91131	48.83482	.0009984	399.1752
Turnover*	241	306.6733	2138.952	.0035297	32212.98
Nr of personnel	267	745.6617	2233.524	1	28466
Balance sheet*	267	2152.083	15649.07	.2792644	248238.4
Profit*	228	31.70876	193.7652	-116.2483	2517.52
Debt*	267	828.0427	7348.071	0	117681
Domestic, individ owners	209	.3683637	.2867675	.0013	.9612

Note: Variables denoted by \* are expressed in millions of EUR.

APPENDIX 2: Comparison of unmatched and matched firms in the treatment and control groups

a) Nearest neighbour matching

Variable	Sample	Mean		%bias	%reduct bias	t-test	
		Treated	Control			t	p>t
turnover	Unmatched	12.934	3.348	31.1		7.02	0.000
	Matched	12.934	14.722	-5.8	81.4	-1.34	0.180
balance statement	Unmatched	21.628	5.3637	25.9		5.41	0.000
	Matched	21.628	24.05	-3.9	85.1	-1.07	0.284
nr of personnel	Unmatched	85.08	24.169	29.7		12.37	0.000
	Matched	85.08	95.101	-4.9	83.5	-0.81	0.421
profits	Unmatched	.97924	-2.8961	0.9		0.18	0.860
	Matched	.97924	1.0042	0	99.4	-0.33	0.739
debt	Unmatched	4.374	2.367	2		0.37	0.710
	Matched	4.374	4.8416	-0.5	76.7	-0.70	0.483

b) Kernel matching

Variable	Sample	Mean		%bias	%reduct bias	t-test	
		Treated	Control			t	p>t
turnover	Unmatched	12.934	3.348	31.1		7.02	0.000
	Matched	12.934	14.531	-5.2	83.3	-1.12	0.261
balance statement	Unmatched	21.628	5.3637	25.9		5.41	0.000
	Matched	21.628	23.458	-2.9	88.7	-0.78	0.438
nr of personnel	Unmatched	85.08	24.169	29.7		12.37	0.000
	Matched	85.08	87.47	-1.2	96.1	-0.20	0.841
profits	Unmatched	.97924	-2.8961	0.9		0.18	0.860
	Matched	.97924	.7661	0.1	94.5	0.04	0.968
debt	Unmatched	4.374	2.367	2		0.37	0.710
	Matched	4.374	4.927	-0.5	72.4	-0.38	0.705

APPENDIX 3: Sensitivity analysis using matching with difference-in-differences

*Dividend responses in non-listed corporations, dividend limit 70,000 euros*

	d(Dividends)		dLog(Divid)	
	NN	Kernel	NN	Kernel
ATT (std error)	-.074 (0.106)	-.144* (0.074)	-.357** (0.065)	-.345** (0.046)
Obs	879	37865	718	19395

*Dividend responses in non-listed corporations, dividend limit 100,000 euros*

	d(Dividends)		dLog(Divid)	
	NN	Kernel	NN	Kernel
ATT (std error)	-0.351* (0.156)	-.289** (0.089)	-0.480** (0.087)	-.403** (0.055)
Obs	562	37865	460	19395

*Investment responses in non-listed corporations, dividend limit 70,000 euros*

	d(Investment)		dLog(Inv)	
	NN	Kernel	NN	Kernel
ATT (std error)	-.057 (0.073)	.064 (0.307)	-0.050 (0.121)	-0.017 (0.065)
Obs	883	38365	562	25358

*Investment responses in non-listed corporations, dividend limit 100,000 euros*

	d(Investment)		dLog(Inv)	
	NN	Kernel	NN	Kernel
ATT (std error)	-.0988 (0.106)	.206 (0.352)	.095 (0.113)	.022 (0.084)
Obs	565	38365	461	25358

# CESifo Working Paper Series

for full list see [www.cesifo-group.org/wp](http://www.cesifo-group.org/wp)

(address: Poschingerstr. 5, 81679 Munich, Germany, [office@cesifo.de](mailto:office@cesifo.de))

---

- 2693 Patricia Funk and Christina Gathmann, Does Direct Democracy Reduce the Size of Government? New Evidence from Historical Data, 1890-2000, June 2009
- 2694 Kirsten Wandschneider and Nikolaus Wolf, Shooting on a Moving Target: Explaining European Bank Rates during the Interwar Period, June 2009
- 2695 J. Atsu Amegashie, Third-Party Intervention in Conflicts and the Indirect Samaritan's Dilemma, June 2009
- 2696 Enrico Spolaore and Romain Wacziarg, War and Relatedness, June 2009
- 2697 Steven Brakman, Charles van Marrewijk and Arjen van Witteloostuijn, Market Liberalization in the European Natural Gas Market – the Importance of Capacity Constraints and Efficiency Differences, July 2009
- 2698 Huifang Tian, John Whalley and Yuezhou Cai, Trade Sanctions, Financial Transfers and BRIC's Participation in Global Climate Change Negotiations, July 2009
- 2699 Axel Dreher and Justina A. V. Fischer, Government Decentralization as a Disincentive for Transnational Terror? An Empirical Analysis, July 2009
- 2700 Balázs Égert, Tomasz Koźluk and Douglas Sutherland, Infrastructure and Growth: Empirical Evidence, July 2009
- 2701 Felix Bierbrauer, Optimal Income Taxation and Public Goods Provision in a Large Economy with Aggregate Uncertainty, July 2009
- 2702 Marc Gronwald, Investigating the U.S. Oil-Macroeconomy Nexus using Rolling Impulse Responses, July 2009
- 2703 Ali Bayar and Bram Smeets, Government Deficits in the European Union: An Analysis of Entry and Exit Dynamics, July 2009
- 2704 Stergios Skaperdas, The Costs of Organized Violence: A Review of the Evidence, July 2009
- 2705 António Afonso and Christophe Rault, Spend-and-tax: A Panel Data Investigation for the EU, July 2009
- 2706 Bruno S. Frey, Punishment – and beyond, July 2009
- 2707 Michael Melvin and Mark P. Taylor, The Crisis in the Foreign Exchange Market, July 2009

- 2708 Firouz Gahvari, Friedman Rule in a Model with Endogenous Growth and Cash-in-advance Constraint, July 2009
- 2709 Jon H. Fiva and Gisle James Natvik, Do Re-election Probabilities Influence Public Investment?, July 2009
- 2710 Jarko Fidrmuc and Iikka Korhonen, The Impact of the Global Financial Crisis on Business Cycles in Asian Emerging Economies, July 2009
- 2711 J. Atsu Amegashie, Incomplete Property Rights and Overinvestment, July 2009
- 2712 Frank R. Lichtenberg, Response to Baker and Fugh-Berman's Critique of my Paper, "Why has Longevity Increased more in some States than in others?", July 2009
- 2713 Hans Jarle Kind, Tore Nilssen and Lars Sörgard, Business Models for Media Firms: Does Competition Matter for how they Raise Revenue?, July 2009
- 2714 Beatrix Brügger, Rafael Lalive and Josef Zweimüller, Does Culture Affect Unemployment? Evidence from the Röstigraben, July 2009
- 2715 Oliver Falck, Michael Fritsch and Stephan Heblich, Bohemians, Human Capital, and Regional Economic Growth, July 2009
- 2716 Wladimir Raymond, Pierre Mohnen, Franz Palm and Sybrand Schim van der Loeff, Innovative Sales, R&D and Total Innovation Expenditures: Panel Evidence on their Dynamics, July 2009
- 2717 Ben J. Heijdra and Jochen O. Mierau, Annuity Market Imperfection, Retirement and Economic Growth, July 2009
- 2718 Kai Carstensen, Oliver Hülsewig and Timo Wollmershäuser, Price Dispersion in the Euro Area: The Case of a Symmetric Oil Price Shock, July 2009
- 2719 Katri Kosonen and Gaëtan Nicodème, The Role of Fiscal Instruments in Environmental Policy, July 2009
- 2720 Guglielmo Maria Caporale, Luca Onorante and Paolo Paesani, Inflation and Inflation Uncertainty in the Euro Area, July 2009
- 2721 Thushyanthan Baskaran and Lars P. Feld, Fiscal Decentralization and Economic Growth in OECD Countries: Is there a Relationship?, July 2009
- 2722 Nadia Fiorino and Roberto Ricciuti, Interest Groups and Government Spending in Italy, 1876-1913, July 2009
- 2723 Andreas Wagener, Tax Competition, Relative Performance and Policy Imitation, July 2009
- 2724 Hans Fehr and Fabian Kindermann, Pension Funding and Individual Accounts in Economies with Life-cyclers and Myopes, July 2009



- 2725 Ernesto Reuben and Arno Riedl, Enforcement of Contribution Norms in Public Good Games with Heterogeneous Populations, July 2009
- 2726 Kurt Schmidheiny and Marius Brülhart, On the Equivalence of Location Choice Models: Conditional Logit, Nested Logit and Poisson, July 2009
- 2727 Bruno S. Frey, A Multiplicity of Approaches to Institutional Analysis. Applications to the Government and the Arts, July 2009
- 2728 Giovanni Villani, A Strategic R&D Investment with Flexible Development Time in Real Option Game Analysis, July 2009
- 2729 Luca Di Corato and Michele Moretto, Investing in Biogas: Timing, Technological Choice and the Value of Flexibility from Inputs Mix, July 2009
- 2730 Gilad D. Aharonovitz, Nathan Skuza and Faysal Fahs, Can Integrity Replace Institutions? Theory and Evidence, July 2009
- 2731 Michele Moretto and Sergio Vergalli, Managing Migration through Conflicting Policies: an Option-theory Perspective, July 2009
- 2732 Volker Nitsch, Fly or Cry: Is Airport Noise Costly?, July 2009
- 2733 Francesco Cinnirella and Joachim Winter, Size Matters! Body Height and Labor Market Discrimination: A Cross-European Analysis, July 2009
- 2734 Samuel Bowles and Sandra Polanía Reyes, Economic Incentives and Social Preferences: A Preference-based Lucas Critique of Public Policy, July 2009
- 2735 Gary Burtless, Lessons of the Financial Crisis for the Design of National Pension Systems, July 2009
- 2736 Helmuth Cremer, Firouz Gahvari and Pierre Pestieau, Fertility, Human Capital Accumulation, and the Pension System, July 2009
- 2737 Hans Jarle Kind and Frank Stähler, Market Shares in Two-Sided Media Industries, July 2009
- 2738 Pamela Campa, Alessandra Casarico and Paola Profeta, Gender Culture and Gender Gap in Employment, August 2009
- 2739 Sebastian Gechert, Supplementary Private Health Insurance in Selected Countries: Lessons for EU Governments?, August 2009
- 2740 Leif Danziger, Endogenous Monopsony and the Perverse Effect of the Minimum Wage in Small Firms, August 2009
- 2741 Yan Dong and John Whalley, A Third Benefit of Joint Non-OPEC Carbon Taxes: Transferring OPEC Monopoly Rent, August 2009

- 2742 Valentina Bosetti, Carlo Carraro and Massimo Tavoni, Climate Change Mitigation Strategies in Fast-Growing Countries: The Benefits of Early Action, August 2009
- 2743 Christina Felfe, The Willingness to Pay for Job Amenities: Evidence from Mothers' Return to Work, August 2009
- 2744 Jörg Franke, Christian Kanzow, Wolfgang Leininger and Alexandra Väh, Effort Maximization in Asymmetric N-Person Contest Games, August 2009
- 2745 Bruno S. Frey and Paolo Pamini, Making World Heritage Truly Global: The Culture Certificate Scheme, August 2009
- 2746 Frank N. Caliendo, Is Social Security behind the Collapse of Personal Saving?, August 2009
- 2747 Caterina Liesegang and Marco Runkel, Corporate Income Taxation of Multinationals and Fiscal Equalization, August 2009
- 2748 Chrysovalantou Milliou and Apostolis Pavlou, Upstream Horizontal Mergers and Efficiency Gains, August 2009
- 2749 Rüdiger Pethig and Christian Wittlich, Interaction of Carbon Reduction and Green Energy Promotion in a Small Fossil-Fuel Importing Economy, August 2009
- 2750 Kai Carstensen, Oliver Hülsewig and Timo Wollmershäuser, Monetary Policy Transmission and House Prices: European Cross-country Evidence, August 2009
- 2751 Olaf Posch, Explaining Output Volatility: The Case of Taxation, August 2009
- 2752 Beatrice Scheubel, Daniel Schunk and Joachim Winter, Don't Raise the Retirement Age! An Experiment on Opposition to Pension Reforms and East-West Differences in Germany, August 2009
- 2753 Daniel G. Arce, Dan Kovenock and Brian Roberson, Suicide Terrorism and the Weakest Link, August 2009
- 2754 Mario Larch and Wolfgang Lechthaler, Comparative Advantage and Skill-Specific Unemployment, August 2009
- 2755 Horst Raff and Nicolas Schmitt, Buyer Power in International Markets, August 2009
- 2756 Seppo Kari, Hanna Karikallio and Jukka Pirttilä, The Impact of Dividend Taxation on Dividends and Investment: New Evidence Based on a Natural Experiment, August 2009