

Blien, Uwe; Suedekum, Jens

Working Paper

Local Economic Structure and Industry Development in Germany, 1993-2001

IZA Discussion Papers, No. 1333

Provided in Cooperation with:

IZA – Institute of Labor Economics

Suggested Citation: Blien, Uwe; Suedekum, Jens (2004) : Local Economic Structure and Industry Development in Germany, 1993-2001, IZA Discussion Papers, No. 1333, Institute for the Study of Labor (IZA), Bonn

This Version is available at:

<https://hdl.handle.net/10419/20602>

Standard-Nutzungsbedingungen:

Die Dokumente auf EconStor dürfen zu eigenen wissenschaftlichen Zwecken und zum Privatgebrauch gespeichert und kopiert werden.

Sie dürfen die Dokumente nicht für öffentliche oder kommerzielle Zwecke vervielfältigen, öffentlich ausstellen, öffentlich zugänglich machen, vertreiben oder anderweitig nutzen.

Sofern die Verfasser die Dokumente unter Open-Content-Lizenzen (insbesondere CC-Lizenzen) zur Verfügung gestellt haben sollten, gelten abweichend von diesen Nutzungsbedingungen die in der dort genannten Lizenz gewährten Nutzungsrechte.

Terms of use:

Documents in EconStor may be saved and copied for your personal and scholarly purposes.

You are not to copy documents for public or commercial purposes, to exhibit the documents publicly, to make them publicly available on the internet, or to distribute or otherwise use the documents in public.

If the documents have been made available under an Open Content Licence (especially Creative Commons Licences), you may exercise further usage rights as specified in the indicated licence.

IZA DP No. 1333

**Local Economic Structure and Industry
Development in Germany, 1993-2001**

Uwe Blien
Jens Suedekum

October 2004

Local Economic Structure and Industry Development in Germany, 1993-2001

Uwe Blien

*Institute for Employment Research (IAB)
and IZA Bonn*

Jens Suedekum

University of Konstanz

Discussion Paper No. 1333
October 2004

IZA

P.O. Box 7240
53072 Bonn
Germany

Phone: +49-228-3894-0
Fax: +49-228-3894-180
Email: iza@iza.org

Any opinions expressed here are those of the author(s) and not those of the institute. Research disseminated by IZA may include views on policy, but the institute itself takes no institutional policy positions.

The Institute for the Study of Labor (IZA) in Bonn is a local and virtual international research center and a place of communication between science, politics and business. IZA is an independent nonprofit company supported by Deutsche Post World Net. The center is associated with the University of Bonn and offers a stimulating research environment through its research networks, research support, and visitors and doctoral programs. IZA engages in (i) original and internationally competitive research in all fields of labor economics, (ii) development of policy concepts, and (iii) dissemination of research results and concepts to the interested public.

IZA Discussion Papers often represent preliminary work and are circulated to encourage discussion. Citation of such a paper should account for its provisional character. A revised version may be available directly from the author.

ABSTRACT

Local Economic Structure and Industry Development in Germany, 1993-2001*

This paper analyses the impact of dynamic MAR- and Jacobs-externalities on local employment growth in Germany between 1993 and 2001. In order to facilitate a comparison between the neighbouring countries we firstly replicate the study of Combes (2000) on local employment growth in France and find very similar results for Germany. Afterwards we formulate an alternative empirical model that is based on a weighted regression approach. With this model we find that Jacobs-externalities matter in manufacturing, whereas MAR-externalities are present in advanced service sectors.

JEL Classification: R11, O40

Keywords: dynamic externalities, local employment growth, urbanisation and localisation effects

Corresponding author:

Jens Suedekum
University of Konstanz
Fach D132
78457 Konstanz
Germany
Email: jens.suedekum@uni-konstanz.de

* The authors thank Friedrich Breyer, Wolfgang Franz, Johannes Ludsteck, Joachim Moeller, Winfried Pohlmeier and Katja Wolf for several very useful suggestions and discussions. All errors and shortcomings are our full responsibility, however.

1) Introduction

Endogenous growth theory suggests that externalities are a major growth engine (Romer, 1986). Knowledge spillovers seem to be particularly relevant for developed countries. The owners of input factors like, say, high skilled labour might not fully internalize their social contribution to the economy. They might rather also raise the total factor productivity externally available to other firms. As shown e.g. by Jaffe et.al. (1993), Ciccone/Hall (1996) or Audretsch/Feldman (1996), the geographical scope of externalities is limited. Even in the internet age the interaction of people, unintended communications, face-to-face contact and so on, remain important. Spillovers apparently do not spill very far and thus they should be more readily observed in local environments (Lucas, 1988).

A major string in the empirical literature about the impact of externalities on local growth was launched by the seminal papers of Glaeser et.al. (1992) and Henderson et.al.(1995). These papers ask what sectoral economic structure is conducive for the employment growth performance of different industries at the local level. Two distinct questions are analysed: Firstly, did industries grow faster in local environments where they were traditionally overrepresented? And secondly, did they grow faster if they historically faced a relatively diversified surrounding industrial structure? If the former turns out to be the case, this is taken as evidence for dynamic Marshall/Arrow/Romer (MAR)-externalities, which are closely related to the more static *localisation economies*. A positive result on the latter question is taken as evidence for dynamic Jacobs-externalities, which are related to the more static *urbanization economies*.¹ MAR-externalities are consistent with intra-sectoral knowledge spillovers. Local overrepresentation of an industry is good for growth, since it facilitates more knowledge exchange between specialists from the same industry. Jacobs-externalities on the other hand imply that knowledge spillovers accrue through a cross-fertilisation of people from different professional backgrounds. Industries should then thrive if they face a great local diversity of industries, as this eases the inter-sectoral knowledge exchange.

A different, but related debate is how the degree of local competition influences the process of knowledge creation and thus, ultimately, growth. If single industries are strongly monopolised within a region, and externalities are mainly intra-sectoral, growth might be enhanced since the monopolist can easier defend and internalise the rents of innovations and subsequently

¹ The focus on the word 'dynamic' is important, because the employment growth performance of different local industries is thought to be influenced by the *historical* and not so much by the *current* local economic structure. The timing of externalities is explicitly analysed in Henderson (1997). Due to the relatively short time period covered by our panel data set we do not explicitly test for the lag structure of externalities, but analyse the impact of the economic structure in the base year (1993) on the growth performance between 1993 and 2001.

reinvest profits in further R&D. On the other hand, competition might be more growth friendly than monopoly, since firms might face a stiffer pressure to innovate (Porter, 1990).

After this urban employment growth literature was launched with American data, a few studies appeared that look at European countries also (see Overman/Combes, 2004 for a survey). Yet, to our knowledge the present paper is the first study on Germany in this respect, after all Europe's largest economy. We can draw on a comprehensive, very accurate and recent data set, covering the complete population of full-time employees from 1993 to 2001, encompassing the entire German territory (i.e. both cities and non-urban areas) and the full range of economic activities. This data structure is comparable to the study of Combes (2000), who analyses local employment growth in France and whose contribution is most closely related to ours. In order to facilitate a comparison between the two neighbouring countries Germany and France, we will (at first) follow the estimation strategy used in that paper. As it turns out, this replication leads to results that are remarkably consistent with the French ones, namely that the evidence for dynamic externalities is rather slim, and that there is even counterevidence on MAR-externalities.² However, we point to some conceptual problems with this estimation and formulate an alternative empirical model that is based on a weighted regression approach, which we see as a methodological contribution of the present paper. This model is then taken back to the German data and we now find that externalities matter significantly for growth and that manufacturing and service industries are affected quite differently. Whereas Jacobs-externalities are important for manufacturing sectors, MAR-externalities are present in advanced service industries.

The rest of the paper is organized as follows. In section 2 we briefly review the existing empirical literature and in particular the paper of Combes (2000). In section 3 we replicate this methodology on our German data. In section 4 we formulate the alternative empirical model and redo the estimations. Section 5 concludes.

2) The related empirical literature

The empirical literature on externalities and local employment growth started with the seminal work of Glaeser et al. (1992). The authors use a cross-section of 6 industries in 170 American cities between 1956 and 1987 and find that city-industries tend to grow faster if the surrounding industrial environment is relatively diversified (Jacobs-externalities) and if the

² Recently, Cingano/Schivardi (2004) have argued that the counterevidence for MAR-externalities might be the result of an identification problem when using employment data. They advocate the use of productivity (TFP) data. Although the argument is convincing, we are also restricted to employment information in this paper, due to the usual problems with the availability of local output and productivity data.

degree of competition is relatively strong. Specialisation does not contribute to faster, but rather to significantly slower growth. This latter finding is interpreted as counterevidence against MAR-externalities, as local overrepresentation apparently is harmful for the growth of a city-industry. A second major contribution comes from Henderson et al. (1995), who analyse the evolution of 8 manufacturing industries in 224 US metropolitan areas between 1970 and 1987. For traditional manufacturing sectors they find no evidence for Jacobs-, but support for MAR-externalities. For “new high-tech” industries, however, Jacobs-externalities seem to be pervasive, whereas the MAR form is not.

Combes (2000) is one of the most recent contributions to this literature. He has data about the employment level of all plants in France with more than 20 employees between 1984 and 1993. He can distinguish 94 (service and manufacturing) industries and 341 French local areas (employment zones). These areas cover the entire French territory and both cities and rural areas. Sample selection issues as in Glaeser et al. (1992) and Henderson et al. (1995) do therefore not arise. He takes the common approach by using the first and the last year of the observation period to obtain a cross section of growth rates. The explanatory variables are computed for the base year and, in this respect, externalities are “dynamic”. He estimates the following reduced form equation

$$\log(y_{z,s}) = I + \alpha_1 \cdot \log(spe_{z,s}) + \alpha_2 \cdot \log(div_{z,s}) + \alpha_3 \cdot \log(den_z) + \alpha_4 \cdot \log(comp_{z,s}) + \alpha_5 \cdot \log(size_{z,s}) + \varepsilon_{z,s} \quad (1)$$

where I is an intercept, $\varepsilon_{z,s}$ is an error term, and

$$y_{z,s} = \frac{emp_{z,s,1993}/emp_{z,s,1984}}{emp_{s,1993}/emp_{s,1984}} \quad (2)$$

is the growth rate of sector s in region z relative to the national growth rate of that sector. Specialization is measured by the local relative to the national employment share of sector s .

$$spe_{z,s} = \frac{emp_{z,s}/emp_z}{emp_s/emp} \quad (3)$$

Diversity is measured by a variant of the Hirshman-Herfindahl-index, again relative to a national average

$$div_{z,s} = \frac{1 / \sum_{s'=1, s' \neq s}^S (emp_{z,s'} / (emp_z - emp_{z,s}))^2}{1 / \sum_{s'=1, s' \neq s}^S (emp_{s'} / (emp - emp_s))^2} \quad (4)$$

This measure increases with local diversity faced by sector s . It reaches a maximum when all surrounding industries account for an identical employment share. Thus, a positive coefficient associated with $div_{z,s}$ signals Jacobs-externalities, as sector s then faces a more balanced local industrial environment. Then,

$$den_z = \frac{emp_z}{area_z} \quad (5)$$

measures the employment density in region z and captures the overall size of the employment areas. Area z is the size of the local employment zone in square kilometres. The variable

$$size_{z,s} = \frac{emp_{z,s} / firms_{z,s}}{emp_s / firms_s} \quad (6)$$

measures the average firm size in sector s and region z relative to the national average in sector s . Finally, $comp_{z,s}$ measures the (relative) degree of competition in each sector-region-combination in the following way

$$comp_{z,s} = \frac{1 / \sum_{i \in z} (emp_{z,s,i} / emp_{z,s})^2}{1 / \sum_i (emp_{s,i} / emp_s)^2} \quad (7)$$

where $emp_{z,s,i}$ and $emp_{s,i}$ are the employment of plant i belonging to sector s and area z . Note that Combes (2000) centres *all* local variables on respective national values. He estimates separately for each industry, but he also performs so-called “global regressions” where all service and all manufacturing industries are lumped together. In order to cope with the censoring problem in the data set (the truncation of plants with fewer than 20 employees), he employs a generalized Tobit method initially proposed by Heckman (1979). In the second

stage of the estimation, when the Mills ratio of the first stage is introduced as a right-hand-side variable, OLS leads to unbiased but inefficient estimators. Therefore maximum likelihood estimation is preferred.

Turning to the results, the most important finding of Combes (2000) is that manufacturing and service industries are affected quite differently from externalities. Jacobs-externalities are only present in service industries. In manufacturing, diversity even reduces growth. On the other hand, as in Glaeser et al. (1992), Combes finds that overrepresentation of an industry in a region significantly reduces employment growth. I.e., he obtains results that imply the exact opposite of MAR-externalities. Average firm size and the competition variable negatively affect growth. Density also has a significantly negative effect, which can represent congestion or suburbanization effects. Table 1 summarizes the “global regression results” for France, which are more in line with Glaeser et al. (1992) than with Henderson et al. (1995). Shaded cells indicate insignificance at the 5%-level.

Table 1: Results of Combes (2000) for France

	<i>Manufacturing</i> <i>n=6664</i>	<i>Services</i> <i>n=5842</i>
Density	-0.161	-0.040
Diversity	-0.051	0.058
Specialisation	-0.088	-0.211
Size	-0.154	-0.110
Competition	-0.030	-0.011
Intercept	0.185	-0.018
<i>Likelihood</i>	-17502.72	-14576.76
<i>Likelihood only intercept</i>	-18637.68	-15736.09

Shaded area: Not significant at the 5%-level

3.) Replication for Germany

In order to facilitate a comparison between Germany and France, we present a close replication of the estimation by Combes in this section. The data for this study is official employment data provided by the German Federal Employment Agency (Bundesagentur fuer Arbeit). This information is highly reliable, as it is used as the basis to determine individual social security contributions. It covers the entire territory of Germany and the complete

sample of full-time employment relationships subject to social security (i.e. excluding civil servants and self-employed individuals) between 1993 and 2001. Employment is observed in 438 NUTS3-districts (“Landkreise” and “kreisfreie Städte”)³ and in 28 different industries, encompassing 15 manufacturing sectors, 10 service sectors, agriculture, mining and the public sector. The data refer to the workplace location and, unlike in the French case, are not subject to any censoring. For every district-industry we know the total employment level and the employment shares in small (<20 workers), medium-sized (20-99) and large (>100) establishments. Furthermore, we know the number of active firms in every cell.

With the data at hand, we can easily compute the variables $spe_{z,s}$, $div_{z,s}$, den_z and $size_{z,s}$ as defined above.⁴ However, we can not observe employment at the plant level and we can therefore not compute the variable $comp_{z,s}$. To come up with an alternative measure for the degree of local product market competition, we use the relative employment share in small firms. That is, we introduce

$$\log[small_{z,s}] = \log \left[\frac{emp[in\ firms < 20\ employees]_{z,s} / emp_{z,s}}{emp[in\ firms < 20\ employees]_s / emp_s} \right], \quad (8)$$

which should reflect local product market competition in the sense that competition should be stiffer the higher is the employment share in small firms. Table 2 reports the cross-correlation table for our five explanatory variables. As can be seen, the correlations are fairly low and we should therefore have no problems with multicollinearity. From a methodological point of view, the replication of the estimation for Germany is done by using OLS. Recall that Combes (2000) only dismissed OLS, because the employment data in the French case was censored for plants with fewer than 20 employees. This is not the case with our data. We also estimate separately for manufacturing and service industries⁵ and with robust standard errors. The results are reported in table 3, with P-values in parentheses.

³ We had to exclude Berlin from the data, because in the base year 1993 the territorial classification of East and West Berlin invoked problems, and the employment data revealed several inconsistencies.

⁴ To compute den_z we use the size of every NUTS3-region in square kilometres as reported in the regional statistics of the German Statistical office.

⁵ The 15 manufacturing industries are Electronics, Chemical Industry, Synthetic Material, Nonmetallic Mineral Mining, Glass&Ceramics, Primary Metal Manufacturing, Machinery, Automobile, Office Supplies & IT, Musical Instruments&Jewellery, Wood-working, Paper & Printing, Leather&Apparel, Food&Tobacco and Building&Construction. The 10 service industries are Commerce, Information&Transportation, Finance&Insurance, Hotels&Gastronomy, Health Care&Social Assistance, Business-Related Services, Education, Leisure-Related Services, Household-Related Services and Social Services. The sectors agriculture, mining and the public sector have been excluded from the estimations.

Table 2: Correlations of the explanatory variables

	Density	Diversity	Specialisation	Size	Small
Density	1				
Diversity	-0.1432	1			
Specialisation	-0.0294	0.0392	1		
Size	0.1863	-0.0350	0.4248	1	
Small	-0.0538	0.0074	-0.1027	-0.1276	1

Table 3: Results for Germany

	<i>Manufacturing</i> <i>n=6399</i>	<i>Services</i> <i>N=4380</i>
Density	-0.0577 (0.000)	0.0065 (0.081)
Diversity	-0.0068 (0.802)	0.0002 (0.988)
Specialisation	-0.0345 (0.005)	-0.0794 (0.000)
Size	-0.1522 (0.000)	-0.1739 (0.000)
Small	-0.0232 (0.000)	-0.0594 (0.002)
Intercept	0.2262 (0.000)	-0.0349 (0.052)
R ²	<i>0.1016</i>	<i>0.1262</i>

Bold numbers: P-value <0.05

Our results are quite consistent with Combes' findings for France reported in table 1. Firstly, we also obtain significantly negative coefficients for the specialization measure, both in manufacturing and in services. The usual interpretation of this finding is that local overrepresentation of an industry (specialisation) reduces the employment growth rate of the respective unit (note, however, the caveat of Cingano/Schivardi, 2004). The coefficients for France are stronger negative than those for Germany. Secondly, as in France, higher employment density reduces employment growth in manufacturing. Combes (2000) takes this finding as evidence for congestion in dense places. We subscribe to this interpretation, which

is consistent with the observation that many countries experience a general suburbanization and de-glomeration process where, in particular, manufacturing employment secularly shifts away from dense city centres to surrounding areas. For West Germany, this process was also found in Moeller/Tassinopoulos (2000). Quantitatively the negative density effect in manufacturing appears to be somewhat stronger in France than in Germany. A similar process does not seem to occur for service sectors, where we find a positive impact of density. Thirdly, we also find a significantly negative impact of average firm size on growth, both in manufacturing and in services. Fourthly, the coefficients for the competition/small-measure are also significantly negative. A slight difference lies in the results for the diversity measure. Whereas Combes finds a significantly negative impact of diversity on growth in manufacturing, and a significantly positive impact in services in the long-run, we find only insignificant coefficients. In sum, the general picture from this estimation is that the results for Germany are very much in line with the results for France.⁶

4.) A modified approach

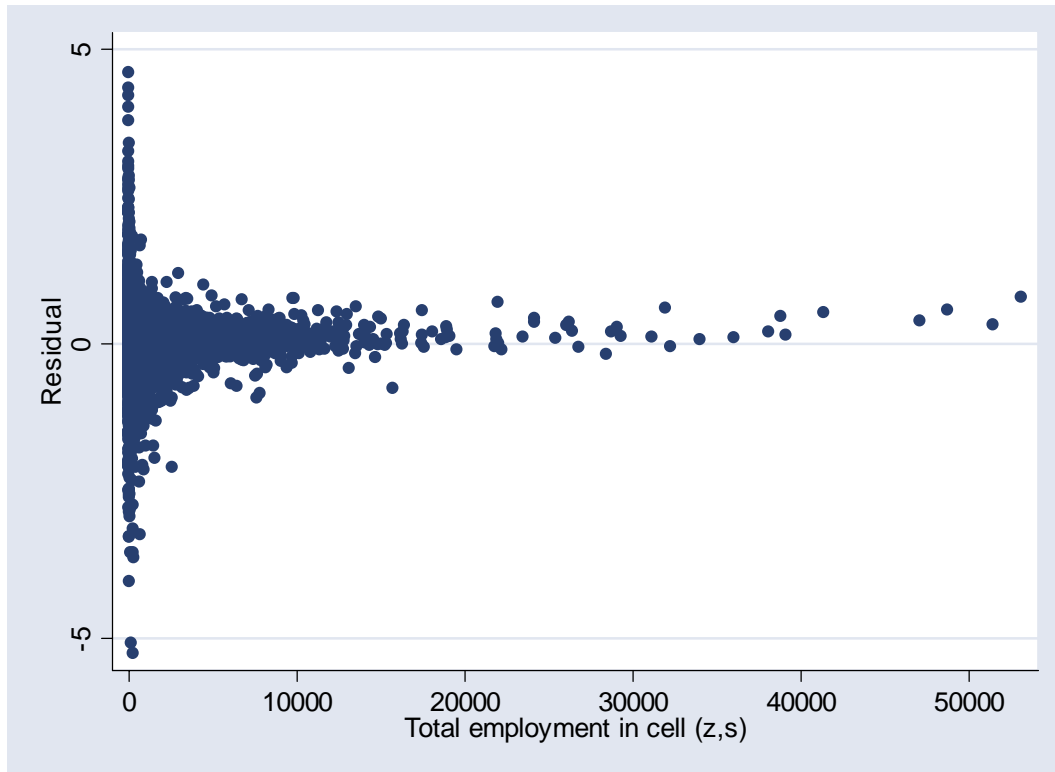
Applying the methodology of Combes (2000) on German data leads to a picture that is fairly consistent with the French one. However, the unweighted regression presented in the last section suffers from inherent heteroskedasticity due to the so-called “*shipbuilding in the midlands*”-problem. The issue is the following: In the data set, the largest district-industry has a total size of 105,675 employees in 1993 (commerce in the city-district Hamburg). On the other hand, there is a bunch of very small district-industries.⁷ Small changes in absolute employment can imply exorbitant jumps in the growth rates (the dependent variable) for these mini sectors, and the error term of the estimation will not be spherical. This is neatly illustrated in figure 1 which depicts the residuals of the unweighted regression for the manufacturing sectors, plotted against the total size of the observation.⁸ Any standard test for heteroskedasticity strongly rejects the hypothesis of a constant variance of the residuals.

⁶ We also checked if the main conclusions change if we only look at West Germany. The reason is that the spatial economic structure of East Germany was characterised by artificially high concentration levels prior to re-unification. This was not due to market forces, but driven by central economic planning of the socialist government with a heavy bias towards industrial mono-structures. This geographical configuration was subject to rapid erosion after German re-unification, in particular in the first years of the observation period. This historically “special” industrial reorganisation process might bias our results and is eliminated if we only look at West Germany. However, redoing the unweighted regression for West Germany reveals that there are no substantial differences in the qualitative conclusions: There is counter-evidence on MAR-, and no evidence for Jacobs externalities.

⁷ From the 11,779 total observations, 1,238 have a size of 100 employees or less. In 369 district-industries there are even less than 20 employees.

⁸ The picture looks qualitatively similar for the service sectors.

Figure 1: Residual structure of unweighted regression (manufacturing)



There are various ways to address this issue. Only estimating with robust standard errors (as we have already done in section 3) and relying on the presumption that the coefficients will be unbiased is not enough in the present context, however. Since we can track the source of heteroskedasticity theoretically, we prefer to adopt an appropriately specified generalized (weighted) least squares procedure, i.e. OLS in transformed variables. The particular weighting scheme we will use is derived from a different argument why the unweighted regression approach is flawed. Recall that the dependent variable of the reduced form equation (1) is (approximately) a growth rate. The (log-)linear specification of the model implies that the growth rate of the aggregate variable \tilde{Z} (i.e. aggregate employment growth in Germany) can be built by the arithmetic mean of the growth rates of the single sub-units (i.e. the employment growth rates of the N single district-industries),

$$\tilde{Z} = \frac{1}{N} \cdot \sum_{j=1}^N [\tilde{z}_j]$$

This specification is in general incorrect, however, which can easily be illustrated with a simple example. Let Z_t be the value of the aggregate variable (e.g. aggregate employment) at

time t that consists of two components (district-industries), $Z_t = x_t + y_t$. The growth rate $\tilde{Z}_{t+1} = (Z_{t+1}/Z_t) - 1$ is in general not equal to the arithmetic mean of the growth rates of x_t and y_t . It is rather given by the *weighted sum* of the growth rates of the sub-units

$$\tilde{Z}_{t+1} = g_x \cdot \tilde{x}_{t+1} + g_y \cdot \tilde{y}_{t+1} \quad (9)$$

where $g_x = x_t/Z_t$ and $g_y = y_t/Z_t$. Stated differently, in an unweighted regression approach the first normal equation of regression analysis is violated, according to which the regression hyperplane passes through the point of means of the data (see Greene, 1997:238f.). In the present context this additivity property is particularly important, however, since we consistently divide total employment in Germany into disjunctive subunits (district-industries) and compute several independent variables by referring to the district level, which itself is obtained by aggregating all s industries located in area z .⁹

We will therefore weight both the dependent and the independent variables with a factor $g_{z,s}$ that is given by the employment level of each district-industry divided by an aggregate employment figure for the base year. Since we estimate separately for manufacturing and services, the respective aggregate is the total employment in all manufacturing (service) industries in 1993, emp_J with $J = \{\text{manufacturing, services}\}$.¹⁰ This weighting procedure, after which the first normal equation of regression analysis is again satisfied, has initially been proposed by Buck/Atkins (1976) in a similar context and was later extended by Patterson (1991). Moeller/Tassinopoulos (2000) have shown that this weighting also ameliorates the heteroskedasticity problem by attaching each district-industry with a weight that reflects the respective importance for aggregate employment. In sum, we estimate the following model

$$\begin{aligned} g_{z,s} \cdot \log(y_{z,s}) = & g_{z,s} \cdot I + \alpha_1 \cdot g_{z,s} \cdot \log(spe_{z,s}) + \alpha_2 \cdot g_{z,s} \cdot \log(div_{z,s}) \\ & + \alpha_3 \cdot g_{z,s} \cdot \log(den_z) + \alpha_4 \cdot g_{z,s} \cdot \log(small_{z,s}) \\ & + \alpha_5 \cdot g_{z,s} \cdot \log(size_{z,s}) + \tilde{\epsilon}_{z,s} \end{aligned} \quad (10)$$

⁹ This is a difference with the growth regressions á la Barro and Sala-i-Martin that, figuratively speaking, also attach the same weight to the United States and Luxemburg. However, in these regressions only country-specific explanatory variables are used, but no control variables that would require an aggregation of information for different countries. In our analysis on the other hand, we use e.g. relative employment shares as RHSV that require information about the size of district-industries, entire districts and entire industries at the national level. Although our observation units are district-industries, conclusions about the impact of specialization and diversity on growth are only possible by aggregating district-industries up to the *regional* and the *national* level. Consistency then requires that the additivity condition must hold, which is warranted only with a weighted regression approach.

¹⁰ Conclusions do not change if we use total national employment as the aggregate figure.

where $g_{z,s} = emp_{z,s} / emp_J$, $\tilde{\varepsilon}_{z,s} = g_{z,s} \cdot \varepsilon_{z,s}$, and $cov(\tilde{\varepsilon}) = \Omega$.¹¹ This econometric approach (10) is equivalent to a standard GLS-procedure (Greene, 1997:507ff.). Table 4 reports the results.¹²

Table 4: Results Weighted Regression

	<i>Manufacturing</i> <i>N=6399</i>	<i>Services</i> <i>N=4380</i>
Density	-0.0536 (0.000)	-0.0055 (0.025)
Diversity	0.1349 (0.000)	0.0296 (0.057)
Specialisation	-0.0460 (0.000)	0.1173 (0.000)
Size	-0.0110 (0.141)	-0.2589 (0.000)
Small	-0.0397 (0.000)	-0.0998 (0.000)
Intercept	0.2868 (0.000)	0.0125 (0.409)
R ²	<i>0.1689</i>	<i>0.1610</i>

Bold numbers: P-value <0.05

The most important message is that the results are now much more in favour of the importance of externalities for local employment growth. For manufacturing industries, industrial diversity and thus Jacobs-externalities matter significantly. Yet, the result remains that local overrepresentation reduces growth, which is negative evidence for MAR-externalities. The change in conclusions is even more drastic for service industries. We now find evidence for dynamic MAR-externalities. Local overrepresentation in 1993 led to significantly faster growth of service industries. One has to keep in mind that very diverse activities are lumped together under the label “service industries”. There are sophisticated jobs such as financial consulting, teaching etc., but also much more basic jobs in the gastronomy or in house-keeping. Presumably, the impact of dynamic externalities is quite different for these different types of service industries. To check this, we split up the services

¹¹ Alternatively, we can define the matrix \mathbf{W} as the diagonal matrix of the weights $g_{z,s}$. The variance/covariance-matrix of the error term $\varepsilon_{z,s}$ from equation (1) is then given by $cov(\varepsilon) = \mathbf{W}\Omega\mathbf{W}$.

¹² One has to keep in mind that with a weighted intercept the R² measure must be interpreted cautiously, as it is no longer defined in the range between zero and one.

into “advanced services” and “basic services”.¹³ For both groups of industries we re-estimate equation (10). Results are reported in table 5.

Table 5: Results Weighted Regression

	<i>Advanced Services</i> <i>N=2628</i>	<i>Basic Services</i> <i>n=1752</i>
Density	-0.0166 (0.000)	-0.0121 (0.005)
Diversity	-0.0111 (0.529)	0.0022 (0.940)
Specialisation	0.1986 (0.000)	-0.0777 (0.000)
Size	-0.2147 (0.000)	-0.4217 (0.000)
Small	-0.0458 (0.093)	-0.3138 (0.000)
Intercept	0.0569 (0.001)	0.0613 (0.024)
R²	<i>0.2152</i>	<i>0.2757</i>

Bold numbers: P-value <0.05

As expected, the impact of the dynamic externalities is very different for the advanced and the basic services. Whereas in the latter neither Jacobs- nor MAR-externalities matter, we can verify the idea that MAR-externalities are strongly present in the advanced service sectors. We find this quite plausible, since the ease of personal interactions between specialists presumably is very important to create knowledge spillovers in such activities as banking, consulting and education. The conclusions with respect to firm sizes and local competition remain unaffected compared to the unweighted regression. The negative density effect is now also prevalent for service industries. Again, all conclusions remain qualitatively unchanged if we only look at West Germany.

¹³ The advanced services include the sectors Commerce, Finance&Insurance, Business-Related Services, Education, Leisure-Related Services and Social Services. The basic services consist of the sectors Information&Transportation, Household-Related Services, Hotels&Gastronomy and Health Care&Social Assistance. The criterion for distinction was income information (average sectoral wages) available also from the employment statistics.

5.) Conclusion

Dynamic externalities play an important role for local employment growth in Germany, but manufacturing and service sectors behave quite differently. Using a weighted regression approach, we find that manufacturing sectors grow more rapidly if they face a relatively diversified industrial environment, which is consistent with Jacobs-externalities. For advanced service sectors we find evidence for dynamic MAR-externalities. These sectors grow strongly in regions where they are locally overrepresented. Externalities do not matter at all for basic services. Given these results, one expects that advanced service sectors should have revealed a geographical concentration process over the recent years, as concentration fosters growth with MAR-externalities. The opposite, a geographical de-concentration process, can be expected for manufacturing industries. As shown by Suedekum (2004), who uses the same data set as the present paper and computes standard geographical concentration measures like locational Gini-coefficients, this is precisely what happened in Germany between 1993 and 2001. The estimation results of the weighted regression approach are thus consistent with the descriptive empirical facts. From a policy perspective, our findings cast some doubts on a regional development strategy that aims to support “regional clusters” in manufacturing. Such structural policies are currently discussed quite intensively for East Germany. To be successful they would require MAR-externalities, since the basic idea of this policy is that regional concentration of the same industry will lead to a growth takeoff. In the past, however, manufacturing sectors did not grow faster if they were locally concentrated. Given our results, the policy of “regional clusters” might only be successful for service industries, where MAR-externalities matter.

Literature

- Audretsch, D. and M. Feldman (1996), R&D Spillovers and the Geography of Innovation and Production, *American Economic Review* 86: 630-640
- Buck, T. and M. Atkins (1976), The Impact of British Regional Policy on Employment Growth, *Oxford Economic Papers* 28: 118-132
- Ciccone, A. and R. Hall (1996), Productivity and the Density of Economic Activity, *American Economic Review* 86: 54-70
- Cingano, F. and F. Schivardi (2004), Identifying the Sources of Local Productivity Growth, *Journal of the European Economic Association* 2: 720-742
- Combes, P. (2000), Economic Structure and Local Growth: France 1984-1993, *Journal of Urban Economics* 47: 329-355
- Combes, P. and H. Overman (2004), The Spatial Distribution of Economic Activities in the European Union, *forthcoming in: Henderson, V. and Thisse, J. (eds.), Handbook of Urban and Regional Economics*, Amsterdam: North Holland.
- Glaeser, E., H.Kallal, J. Scheinkman and A. Shleifer (1992), Growth in Cities, *Journal of Political Economy* 100: 1126-1152
- Greene, W. (1997), *Econometric Analysis*, 3rd ed., New Jersey: Prentice Hall
- Henderson, V. (1997), Externalities and Industrial Development, *Journal of Urban Economics* 42: 449-470
- Henderson, V., A. Kuncoro and M. Turner (1995), Industrial Development in Cities, *Journal of Political Economy* 103: 1067- 1090
- Jacobs, J. (1969), *The Economy of Cities*, New York: Vintage.
- Jaffe, A., M. Trajtenberg and R. Henderson (1993), Geographical Localization of Knowledge Spillovers as Evidenced by Patent Citations, *Quarterly Journal of Economics* 108: 577-598
- Lucas, R. (1988), On the Mechanics of Economic Development, *Journal of Monetary Economics* 22: 3-42
- Moeller, J. and A. Tassinopoulos (2000), Zunehmende Spezialisierung oder Strukturkonvergenz? Eine Analyse der sektoralen Beschäftigungsentwicklung auf regionaler Ebene, *Jahrbuch für Regionalwissenschaft* 20: 1-38
- Patterson, M. (1991), A Note on the Formulation of a Full-Analogue Regression Model of the Shift-Share Method, *Journal of Regional Science* 31: 211-216
- Porter, M. (1990), *The Competitive Advantage of Nations*, New York: Free Press.
- Romer, P. (1986), Increasing Returns and Long-Run Growth, *Journal of Political Economy* 94: 1002-1037
- Suedekum, J. (2004), Concentration and Specialisation Trends in Germany since Re-Unification, HWWA Discussion Paper 285, Hamburg.